



LED OUTDOOR WALL SCONCE

OLWS-23 series

► **DESIGN** - LED OUTDOOR WALL SCONCE has a modern, multipurpose design and a stylish look with efficient lighting. The UV resistant PMMA lens with a 125° beam angle grants you even light distribution. It is designed to operate on 120V circuits and provides smooth triac dimming capabilities ranging from 10% to 100%.

► **VARIETY** - The fixture comes in 8-, 14- and 24-inch and available in Black finish.

► **COLOR SELECTABLE** - You can choose either a 3000K warm white, 4000K cool white or 5000K daylight color temperature.

► **INSTALLATION** - Installation is quick and easy: just attach the cross bar to the outlet box with screws, connect the wires, and fasten the fixture to the cross bar. Screws, wire nuts and all necessary installation accessories are provided.

► **APPLICATION** - The fixture is rated for Wet Locations, making it perfect for indoor and outdoor projects such as decks, front doors, porches, patios, corridors, walkways, or any other common areas.

► **ADVANTAGES** - With a lifespan of 50,000 hours, these fixtures are made to last decades under normal operation! ASD provides a 5-year limited warranty along with ETL certification to guarantee top quality products and safety!

► **OPTIONS:**

► **MODEL WITH PHOTOCELL** - The built-in Dusk to Dawn Photocell will automatically turn the fixture on/off depending on the time of day.



PRODUCT PRESENTATION:

Model	Size	Power	Voltage	Dimming	Lumens	CCT	Finish	Dimensions	Pre-Installed	Certification
OLWS-23										
ASD-OLWS-23-8D12CC-BK	8 inch	12 W	120V	Triac	909lm	3,000/4,000/5,000 K	Black	6" x 3-1/8" x 8"	-	ETL(5032534)
ASD-OLWS-23-14D20CC-BK	14 inch	20 W	120V	Triac	1,909lm	3,000/4,000/5,000 K	Black	6" x 3-1/8" x 14"	-	ETL(5032534)
ASD-OLWS23-24D30CC-BK	24 inch	30 W	120-277V	Triac	2,603lm	3,000/4,000/5,000 K	Black	6" x 3-1/8" x 24"	-	ETL(5032534)
OLWS-23-PC WITH PHOTOCELL										
ASD-OLWS-23-14N20CC-PC-BK	14 inch	20 W	120V	-	1,909lm	3,000/4,000/5,000 K	Black	6" x 3-1/8" x 14-5/8"	Photocell	ETL(5032534)

For most up-to-date spec sheets please refer to asd-lighting.com



LED OUTDOOR WALL SCONCE

OLWS-23 series

TECHNICAL PARAMETERS:

Model	Work environment	Operating temperature	Power factor	Beam Angle	Surge protection	Housing	Lens	CRI
OLWS-23								
ASD-OLWS-23-8D12CC-BK	Wet location	-40°F to 113°F (-40°C to 45°C)	>0,9	125°	1kV	Aluminium	Acrylic	>80
ASD-OLWS-23-14D20CC-BK	Wet location	-40°F to 113°F (-40°C to 45°C)	>0,9	125°	1kV	Aluminium	Acrylic	>80
ASD-OLWS23-24D30CC-BK	Wet location	-40°F to 113°F (-40°C to 45°C)	>0,9	125°	2kV	Aluminium	Acrylic	>80
OLWS-23-PC WITH PHOTOCELL								
ASD-OLWS-23-14N20CC-PC-BK	Wet location	-4°F to 113°F (-20°C to 45°C)	>0,9	125°	1kV	Aluminium	Acrylic	>80

PACKAGE CONTENTS:

Description	Quantity
LED Outdoor Wall Sconce	1
Crossbar (A)	1
Mounting screw (B)	2
Wire nut (C)	3
Black screw (D)	4
Photocell cap (E) only for PC models	1
Box	1



BUILT-IN PHOTOCELL INFORMATION

Specifications	
Light level to turn ON	30 ~ 150 lux (2.8 - 14 fc)
Light level to turn OFF	200 ~ 800 lux (18.6-74.4 fc)
Operating temperature	-4°F to 122°F (-20°C to 50°C)

The dusk-to-dawn sensor automatically turns the fixture off during daylight hours.

INSTALLATION GUIDE

IMPORTANT SAFETY INFORMATION:

Please read all the instructions below before installation!

- ▶ Make sure that the supply voltage corresponds to the rated product voltage.
- ▶ The product must be installed by a qualified electrician in accordance with the National Electrical Code and corresponding local codes.
- ▶ If the product is damaged, do not use it.

⚠ WARNING

RISK OF PERSONAL INJURY – READ and follow all WARNINGS and installation instructions. Keep or give to the owner for future reference.

Risk of cuts: Wear gloves to prevent cuts or abrasions when removing from carton, handling, installing, and maintaining this product.

Risk of electric shock: This product must be installed in accordance with the applicable installation code by a person familiar with the construction and operation of the product and the hazards involved.

Risk of Fire: Minimum 194°F supply conductors. Consult a qualified electrician to ensure correct branch circuit conductor.

ASD® assumes no responsibility for claims arising out of improper or careless installation or handling of this product.

For most up-to-date spec sheets please refer to asd-lighting.com

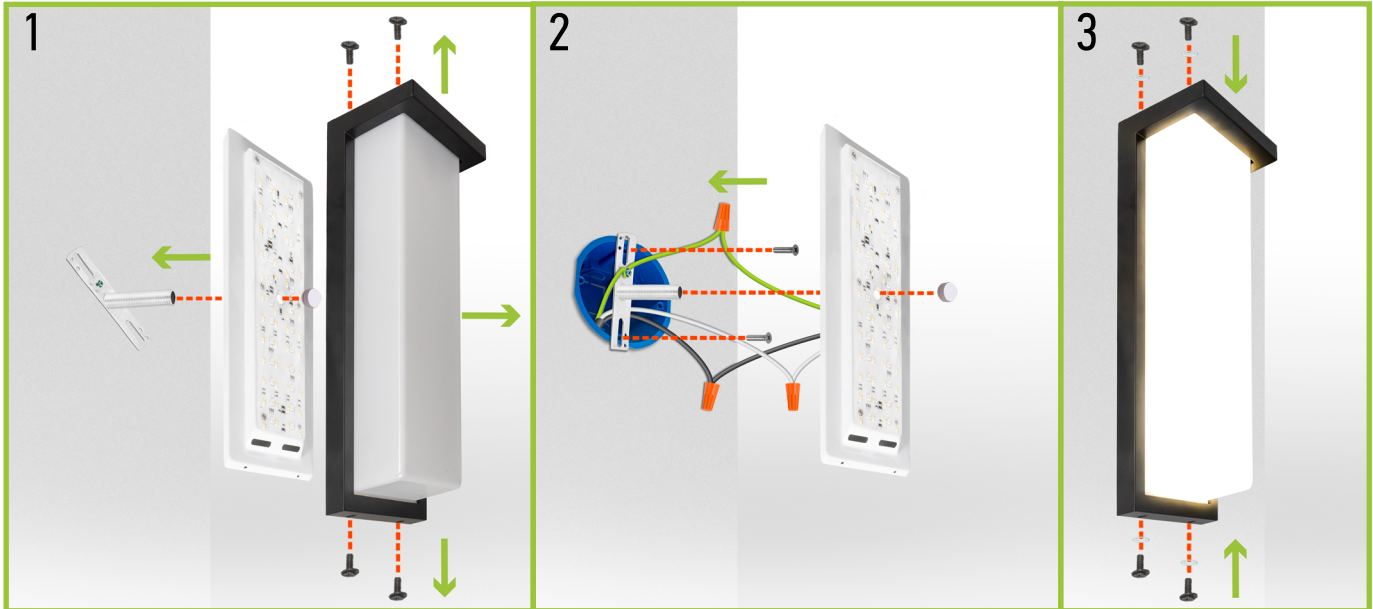


LED OUTDOOR WALL SCONCE

OLWS-23 series

INSTALLATION STEPS:

1. Remove the lens from the fixture body. In models with photocell option remove the photocell cap to make the dusk-to-dawn sensor operate.
2. Attach the crossbar to the outlet box using mounting screws. Place the fixture body over the outlet box onto the mounting nipple and adjust it by tightening inward or from the mounting bracket. Secure the fixture body position with cap nut. Connect the wires: Black to Black, White to White, Green to Green. Secure the connection with wire nuts. Choose needed color temperature by adjusting the switch position.
3. Reattach the lens to the fixture body using 4 screws.
For outdoor locations please use silicone (not included).



* This fixture is not rated for heavy salt water exposure or high salt content in the air. It may cause parts of the fixture to Rust. Will void the warranty of the fixture if installed in a coastal area.

ORDERING INFORMATION

Model	Product dimensions	Weight	Pcs. per carton	Carton size	Carton weight	UPC	GTIN 14
OLWS-23							
ASD-OLWS-23-8D12CC-BK	6' x 3-1/8" x 8"	1.9 lbs(0.9kg)	4	13.19" x 7.28" x 9.06"	10.6 lbs	81005073884	10810050738849
ASD-OLWS-23-14D20CC-BK	6' x 3-1/8" x 14"	2.7 lbs(1.2kg)	4	13.19" x 7.28" x 14.96"	13.2 lbs	81005073885	10810050738856
ASD-OLWS23-24D30CC-BK	6' x 3-1/8" x 24"	5.1 lbs(2.3kg)	4	25.00" x 7.28" x 13.39"	21.6 lbs	81019020096	10810190200961
OLWS-23-PC WITH PHOTOCELL							
ASD-OLWS-23-14N20CC-PC-BK	6' x 3-1/8" x 14-5/8"	2.8 lbs(1.3kg)	4	13.19" x 7.28" x 15.75"	13.6 lbs	81012811053	10810128110539

For most up-to-date spec sheets please refer to asd-lighting.com

ASD LIGHTING CORP

E-mail: orders@asd-lighting.com | Web site: www.asd-lighting.com

