



# LED EDGE LIT PANEL

► **DESIGN** - LED SQUARE EDGE LIT PANEL offers a sleek, low-profile design, ideal for spaces with low ceilings. Its acrylic lens with a 110° beam angle ensures you even light distribution. Smooth triac dimming capabilities from 10% to 100% with modern LED dimmers gives you full control over your space. It is also highly efficient with up to 100 Lm/W output.

► **VARIETY** - The fixture comes in square shape in 5-inch, 7-inch, 9-inch and 12-inch with voltage 120V and available in White or Black finishes.

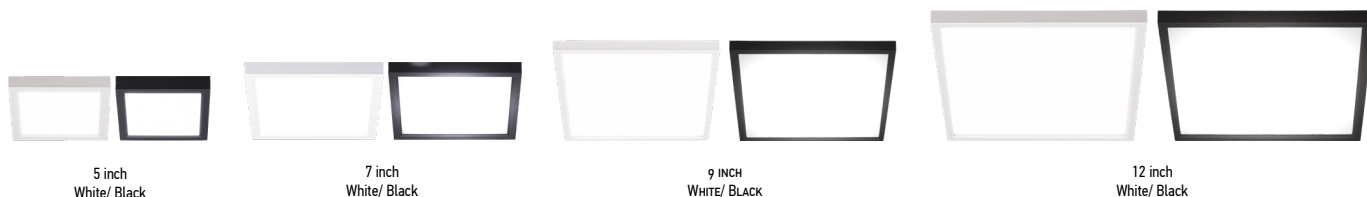
► **COLOR SELECTABLE** - You can choose either a 2,700K soft white, 3,000K warm white, 3,500K neutral white, 4,000K cool white, or 5,000K daylight color temperature.

► **INSTALLATION** - The fixture can be installed on either an existing outlet box or a remodeled can using a retrofit kit with universal TP24 or E26 connectors. Installation into a can is only applicable for 5, 7, 9 and 12 inch models. It is also suitable for Damp and Wet Locations, making it perfect for family room, bedroom or any other common areas.

► **ADVANTAGES** - With a lifespan of 50,000 hours, these fixtures are made to last decades under normal operation! ASD provides a 5-year limited warranty along with ETL certification to guarantee top quality products and safety!



Finish:  White  Black



## PRODUCT PRESENTATION:

Model	Size	Power	Voltage	Dimming	Lumens	CCT	Finish	Dimensions	Work environment	Pre-installed	Certification
ASD-MPS-5D10CC-WH-6PACK	5 inch	10 W	120 V	TRIAC	744 lm	3,000/4,000/5,000 K	White	5-5/16" x 5-5/16" x 1-1/8"	Damp location	-	ETL(4001256)
ASD-MPS-5D10CC-BK-6PACK	5 inch	10 W	120 V	TRIAC	744 lm	3,000/4,000/5,000 K	Black	5-5/16" x 5-5/16" x 1-1/8"	Damp location	-	ETL(4001256)
ASD-MPS-7D15CC-WH-6PACK	7 inch	15 W	120 V	TRIAC	1,094 lm	3,000/4,000/5,000 K	White	7-1/16" x 7-1/16" x 1-1/8"	Damp location	-	ETL(4001256)
ASD-MPS-7D15CC-BK-6PACK	7 inch	15 W	120 V	TRIAC	1,094 lm	3,000/4,000/5,000 K	Black	7-1/16" x 7-1/16" x 1-1/8"	Damp location	-	ETL(4001256)
ASD-MPS-9D18CC-WH	9 inch	18 W	120 V	TRIAC	1,452 lm	3,000/4,000/5,000 K	White	8-7/8" x 8-7/8" x 1-1/8"	Damp location	-	ETL(4001256)
ASD-MPS-9D18CC-BK	9 inch	18 W	120 V	TRIAC	1,452 lm	3,000/4,000/5,000 K	Black	8-7/8" x 8-7/8" x 1-1/8"	Damp location	-	ETL(4001256)
ASD-MPS-9D18CC-WH-6PACK	9 inch	18 W	120 V	TRIAC	1,452 lm	3,000/4,000/5,000 K	White	8-7/8" x 8-7/8" x 1-1/8"	Damp location	-	ETL(4001256)
ASD-MPS-9D18CC-BK-6PACK	9 inch	18 W	120 V	TRIAC	1,452 lm	3,000/4,000/5,000 K	Black	8-7/8" x 8-7/8" x 1-1/8"	Damp location	-	ETL(4001256)
ASD-MPS-12D24WH	12 inch	24 W	120 V	TRIAC	1,731 lm	2,700/3,000/4,000/5,000/6,000 K	White	11-13/16" x 11-13/16" x 1-1/8"	Wet location	-	ETL(4001256)
ASD-MPS-12D24BK	12 inch	24 W	120 V	TRIAC	1,731 lm	2,700/3,000/4,000/5,000/6,000 K	Black	11-13/16" x 11-13/16" x 1-1/8"	Wet location	-	ETL(4001256)
ASD-MPS-12D24CC-WH	12 inch	24 W	120 V	TRIAC	1,824 lm	3,000/4,000/5,000 K	White	11-13/16" x 11-13/16" x 1-1/8"	Damp location	-	ETL(4001256)
ASD-MPS-12D24CC-BK	12 inch	24 W	120 V	TRIAC	1,824 lm	3,000/4,000/5,000 K	Black	11-13/16" x 11-13/16" x 1-1/8"	Damp location	-	ETL(4001256)

For most up-to-date spec sheets please refer to [asd-lighting.com](http://asd-lighting.com)



# LED EDGE LIT PANEL

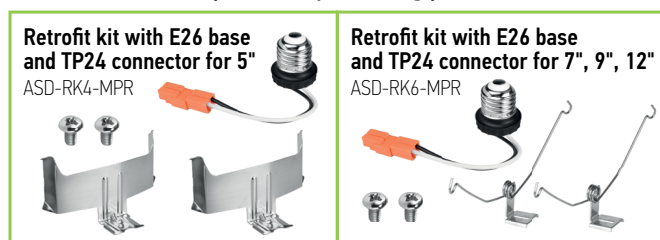
## TECHNICAL PARAMETERS:

Model	Operating temperature	Power factor	Beam angle	Surge protection	Housing	Lens	CRI
ASD-MPS-5D10CC-WH-6PACK	-4°F to 113°F (-20°C to 45°C)	> 0.9	110°	1.25kV	Plastic	Acrylic	> 80
ASD-MPS-5D10CC-BK-6PACK	-4°F to 113°F (-20°C to 45°C)	> 0.9	110°	1.25kV	Plastic	Acrylic	> 80
ASD-MPS-7D15CC-WH-6PACK	-4°F to 113°F (-20°C to 45°C)	> 0.9	110°	1.25kV	Plastic	Acrylic	> 80
ASD-MPS-7D15CC-BK-6PACK	-4°F to 113°F (-20°C to 45°C)	> 0.9	110°	1.25kV	Plastic	Acrylic	> 80
ASD-MPS-9D18CC-WH	-4°F to 113°F (-20°C to 45°C)	> 0.9	110°	1.25kV	Plastic	Acrylic	> 80
ASD-MPS-9D18CC-BK	-4°F to 113°F (-20°C to 45°C)	> 0.9	110°	1.25kV	Plastic	Acrylic	> 80
ASD-MPS-9D18CC-WH-6PACK	-4°F to 113°F (-20°C to 45°C)	> 0.9	110°	1.25kV	Plastic	Acrylic	> 80
ASD-MPS-9D18CC-BK-6PACK	-4°F to 113°F (-20°C to 45°C)	> 0.9	110°	1.25kV	Plastic	Acrylic	> 80
ASD-MPS-12D24WH	-4°F to 113°F (-20°C to 45°C)	> 0.9	110°	1.25kV	Plastic	Acrylic	> 80
ASD-MPS-12D24BK	-4°F to 113°F (-20°C to 45°C)	> 0.9	110°	1.25kV	Plastic	Acrylic	> 80
ASD-MPS-12D24CC-WH	-4°F to 113°F (-20°C to 45°C)	> 0.9	110°	1.25kV	Plastic	Acrylic	> 80
ASD-MPS-12D24CC-BK	-4°F to 113°F (-20°C to 45°C)	> 0.9	110°	1.25kV	Plastic	Acrylic	> 80

## DIMMING COMPATIBLE CONTROLS:

Brand	Lutron	Leviton	Maxxima
Models	MACL-153MLH-WH	DVCL-153PR	66721LW
	STCL-153PH-WH	AYCL-153P	DSL06
	PD-6WCL-WH-R	P-PKG1W	
	TGCL-153PH-LA	SCL-153P	6674-POW

## ACCESSORIES (sold separately):

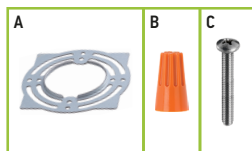


## ACCESSORY COMPATIBILITY LIST:

Accessories		Retrofit kit with E26 base and TP24 connector for 5" ASD-RK4-MPR		Retrofit kit with E26 base and TP24 connector for 7", 9", 12" ASD-RK6-MPR	
		5"	7"	9"	12"
ASD-MPS	5"	•			
	7"			•	
	9"			•	
	12"			•	

## PACKAGE CONTENTS:

Description	Quantity
LED Square Edge Lit Panel	1
Mounting plate (A)	1
Wire nut (B)	3
Screw (C)	2
Box	1



For most up-to-date spec sheets please refer to [asd-lighting.com](http://asd-lighting.com)



# LED EDGE LIT PANEL

## INSTALLATION GUIDE

### IMPORTANT SAFETY INFORMATION:

Please read all the instructions below before installation!

- ▶ Make sure that the supply voltage corresponds to the rated product voltage.
- ▶ The product must be installed by a qualified electrician in accordance with the National Electrical Code and corresponding local codes.
- ▶ If the product is damaged, do not use it.

### ⚠ WARNING

**Risk of personal injury** – read and follow all warnings and installation instructions. Keep or give to the owner for future reference.

**Risk of cuts:** Wear gloves to prevent cuts or abrasions when removing from carton, handling, installing, and maintaining this product.

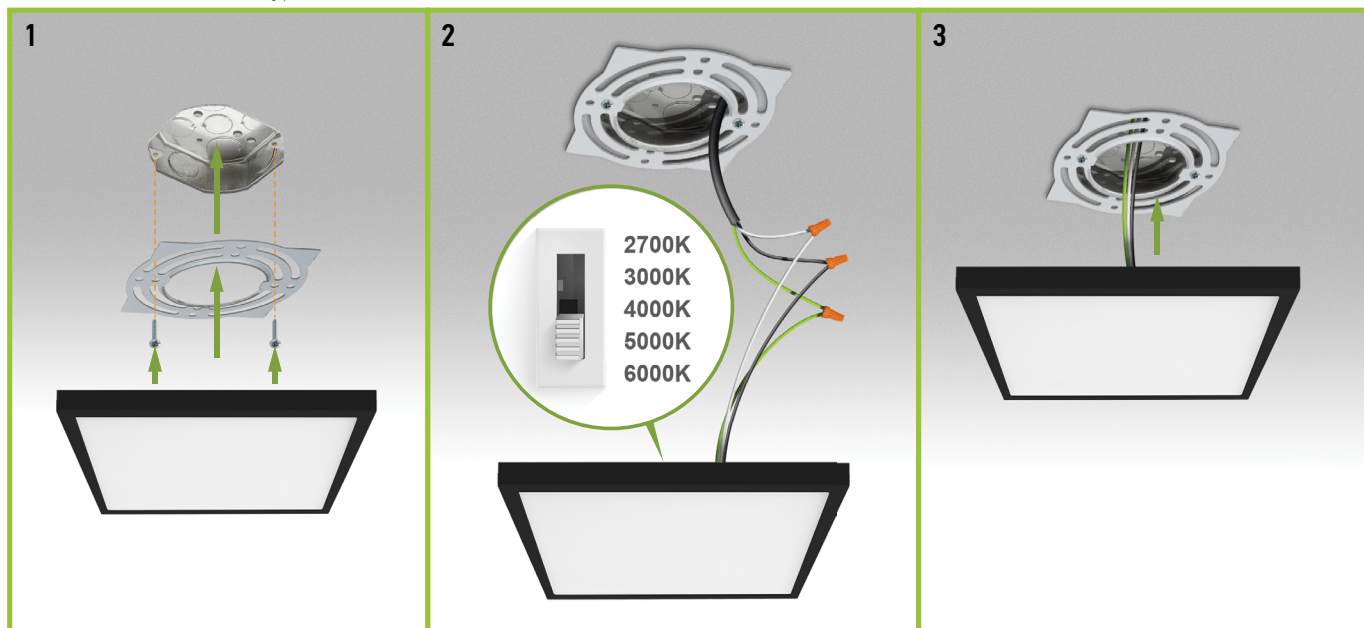
**Risk of electric shock:** This product must be installed in accordance with the applicable installation code by a person familiar with the construction and operation of the product and the hazards involved.

**Risk of Fire:** Minimum 194°F supply conductors. Consult a qualified electrician to ensure correct branch circuit conductor.

ASD® assumes no responsibility for claims arising out of improper or careless installation or handling of this product.

### SQUARE MODELS INSTALLATION MPS 5-12 INCH:

1. Remove the mounting plate from the fixture and attach it to the existing outlet box in the ceiling using two screws.
2. Choose preferred color temperature by adjusting the switch. Connect the wires: Black to Black, White to White, Green to Green. Secure the connection with wire nuts.
3. Insert the fixture to the mounting plate until it clicks.



For most up-to-date spec sheets please refer to [asd-lighting.com](http://asd-lighting.com)





# LED EDGE LIT PANEL

## ORDERING INFORMATION

Model	Product dimensions	Weight	Pcs. (pack) per carton	Carton size	Carton weight	UPC	GTIN 14
ASD-MPS-5D10CC-WH-6PACK	5-5/16" x 5-5/16" x 1-1/8"	3.6 lbs (1.6 kg)	12 (2)	15" x 8.3" x 6.9"	9.5 lbs	819201026746	10819201026743
ASD-MPS-5D10CC-BK-6PACK	5-5/16" x 5-5/16" x 1-1/8"	3.6 lbs (1.6 kg)	12 (2)	15" x 8.3" x 6.9"	9.5 lbs	810128110396	10810128110393
ASD-MPS-7D15CC-WH-6PACK	7-1/16" x 7-1/16" x 1-1/8"	5.4 lbs (2.4 kg)	12 (2)	15.8" x 9.7" x 8.7"	13.1 lbs	810128110082	10810128110089
ASD-MPS-7D15CC-BK-6PACK	7-1/16" x 7-1/16" x 1-1/8"	5.4 lbs (2.4 kg)	12 (2)	15.8" x 9.7" x 8.7"	13.1 lbs	819201029846	10819201029843
ASD-MPS-9D18CC-WH	8-7/8" x 8-7/8" x 1-1/8"	1.4 lbs (0.6 kg)	12	19.7" x 10.2" x 9.7"	20.6 lbs	810050737630	10810050737637
ASD-MPS-9D18CC-BK	8-7/8" x 8-7/8" x 1-1/8"	1.4 lbs (0.6 kg)	12	19.7" x 10.2" x 9.7"	20.6 lbs	810050738873	10810050738870
ASD-MPS-9D18CC-WH-6PACK	8-7/8" x 8-7/8" x 1-1/8"	7.6 lbs (3.4 kg)	12 (2)	15.8" x 11.4" x 10.4"	19 lbs	810050737647	10810050737644
ASD-MPS-9D18CC-BK-6PACK	8-7/8" x 8-7/8" x 1-1/8"	7.6 lbs (3.4 kg)	12 (2)	15.8" x 11.4" x 10.4"	19 lbs	819201029211	10819201029218
ASD-MPS-12D24WH	11-13/16" x 11-13/16" x 1-1/8"	4.5 lbs (2 kg)	4	13.2" x 6.9" x 12.6"	10.8 lbs	810128118125	10810128118122
ASD-MPS-12D24BK	11-13/16" x 11-13/16" x 1-1/8"	4.5 lbs (2 kg)	4	13.2" x 6.9" x 12.6"	10.8 lbs	810128118989	10810128118986
ASD-MPS-12D24CC-WH	11-13/16" x 11-13/16" x 1-1/8"	4.5 lbs (2 kg)	4	13.2" x 6.9" x 12.6"	10.8 lbs	819201024513	10819201024510
ASD-MPS-12D24CC-BK	11-13/16" x 11-13/16" x 1-1/8"	4.5 lbs (2 kg)	4	13.2" x 6.9" x 12.6"	10.8 lbs	819201026876	10819201026873

## ACCESSORIES:

Model	Product dimensions	Pcs. in middle box	Middle box size	Middle box weight	Pcs. per carton	Carton size	Carton weight	UPC	GTIN 14 in middle box	GTIN 14 in carton
ASD-RK4-MPR	2-11/16" x 1/2" x 1-7/8"	12	7.1" x 5.1" x 5.7"	1.3 lbs	48	11" x 7.7" x 12.4"	6 lbs	810050731089	10810050731086	20810050731083
ASD-RK6-MPR	6-15/16" x 15/16" x 2-15/16"	12	7.1" x 5.1" x 5.7"	1.4 lbs	48	11" x 7.7" x 12.4"	6.3 lbs	810050731096	10810050731093	20810050731090

For most up-to-date spec sheets please refer to [asd-lighting.com](http://asd-lighting.com)

ASD LIGHTING CORP

E-mail: [orders@asd-lighting.com](mailto:orders@asd-lighting.com) | Web site: [www.asd-lighting.com](http://www.asd-lighting.com)

