



LED EDGE LIT PANEL

► **DESIGN** - LED EDGE LIT PANEL offers a sleek, low-profile design, ideal for spaces with low ceilings. It's acrylic lens with a 110° beam angle ensures you even light distribution. Smooth triac dimming capabilities from 10% to 100% with modern LED dimmers gives you full control over your space. It is also highly efficient with up to 100 Lm/W output. Pendant installation is available with additional accessories.

► **VARIETY** - The fixture comes in round and oval shapes in 5-inch, 7-inch, 9-inch, 12-inch, 15-inch, 18-inch, 24-inch and 32-inch with voltage 120V or 120-277V and available in White, Black or Nickel finishes.

► **COLOR SELECTABLE** - You can choose either a 2,700K soft white, 3,000K warm white, 3,500K neutral white, 4,000K cool white, or 5,000K daylight color temperature.

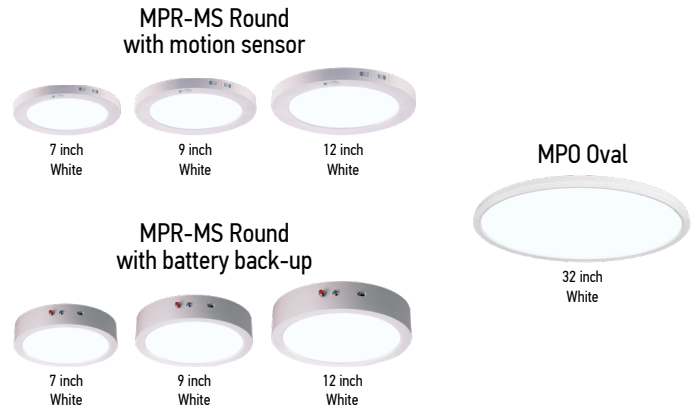
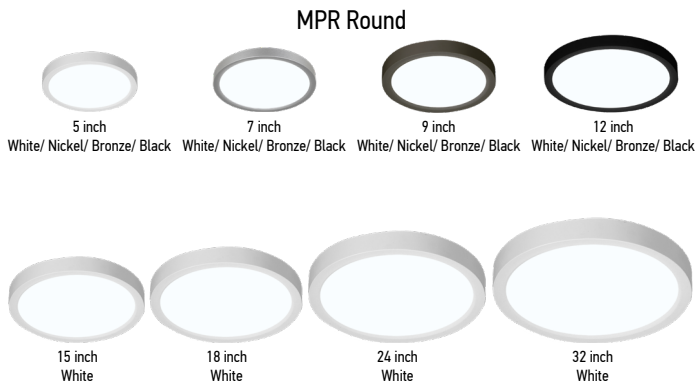
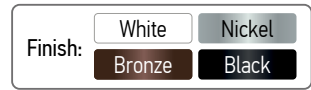
► **INSTALLATION** - The fixture can be installed on either an existing outlet box or a remodeled can using a retrofit kit with universal TP24 or E26 connectors. Installation into a can is only applicable for 5, 7, 9 and 12 inch models. It is also suitable for Damp and Wet Locations, making it perfect for family room, bedroom or any other common areas.

► **ADVANTAGES** - With a lifespan of 50,000 hours, these fixtures are made to last decades under normal operation! ASD provides a 5-year limited warranty along with ETL certification to guarantee top quality products and safety!

► **OPTIONS:**

MODELS WITH MOTION SENSOR - The built-in PIR motion sensor will turn off the fixture automatically when no motion is detected.

MODELS WITH BATTERY BACK-UP - The built-in battery back-up provide 90 minutes of power in case of emergency.



PRODUCT PRESENTATION:

Model	Size	Power	Voltage	Dimming	Lumens	CCT	Finish	Dimensions	Work environment	Pre-installed	Certification
MPR ROUND											
ASD-MPR-5D10WH	5 inch	10 W	120 V	TRIAC	692 lm	2,700/3,000/4,000/5,000/6,000 K	White	5-5/16" x 1"	Wet location	-	ETL(4001256)
ASD-MPR-5D10BK	5 inch	10 W	120 V	TRIAC	692 lm	2,700/3,000/4,000/5,000/6,000 K	Black	5-5/16" x 1"	Wet location	-	ETL(4001256)
ASD-MPR-5D10CC-WH-6PACK	5 inch	10 W	120 V	TRIAC	777 lm	3,000/4,000/5,000 K	White	5-5/16" x 1"	Damp location	-	ETL(4001256)
ASD-MPR-5D10CC-BR-6PACK	5 inch	10 W	120 V	TRIAC	777 lm	3,000/4,000/5,000 K	Bronze	5-5/16" x 1"	Damp location	-	ETL(4001256)
ASD-MPR-5D10CC-BK-6PACK	5 inch	10 W	120 V	TRIAC	777 lm	3,000/4,000/5,000 K	Black	5-5/16" x 1"	Damp location	-	ETL(4001256)
ASD-MPR-7D15WH	7 inch	15 W	120 V	TRIAC	1,262 lm	2,700/3,000/4,000/5,000/6,000 K	White	7-1/16" x 1"	Wet location	-	ETL(4001256)
ASD-MPR-7D15NK	7 inch	15 W	120 V	TRIAC	1,262 lm	2,700/3,000/4,000/5,000/6,000 K	Nickel	7-1/16" x 1"	Wet location	-	ETL(4001256)
ASD-MPR-7D15BK	7 inch	15 W	120 V	TRIAC	1,262 lm	2,700/3,000/4,000/5,000/6,000 K	Black	7-1/16" x 1"	Wet location	-	ETL(4001256)
ASD-MPR-7D15CC-WH	7 inch	15 W	120 V	TRIAC	1,341 lm	3,000/4,000/5,000 K	White	7-1/16" x 1"	Damp location	-	ETL(4001256)
ASD-MPR-7D15CC-BK	7 inch	15 W	120 V	TRIAC	1,341 lm	3,000/4,000/5,000 K	Black	7-1/16" x 1"	Damp location	-	ETL(4001256)
ASD-MPR-7D15CC-WH-6PACK	7 inch	15 W	120 V	TRIAC	1,341 lm	3,000/4,000/5,000 K	White	7-1/16" x 1"	Damp location	-	ETL(4001256)
ASD-MPR-7D15CC-BR-6PACK	7 inch	15 W	120 V	TRIAC	1,341 lm	3,000/4,000/5,000 K	Bronze	7-1/16" x 1"	Damp location	-	ETL(4001256)
ASD-MPR-7D15CC-BK-6PACK	7 inch	15 W	120 V	TRIAC	1,341 lm	3,000/4,000/5,000 K	Black	7-1/16" x 1"	Damp location	-	ETL(4001256)

For most up-to-date spec sheets please refer to asd-lighting.com



LED EDGE LIT PANEL

Model	Size	Power	Voltage	Dimming	Lumens	CCT	Finish	Dimensions	Work environment	Pre-installed	Certification
ASD-MPR-9D18WH	9 inch	18 W	120 V	TRIAC	1,664 lm	2,700/3,000/4,000/5,000/6,000 K	White	8-7/8" x 1-3/4"	Wet location	-	ETL(4001256)
ASD-MPR-9D18NK	9 inch	18 W	120 V	TRIAC	1,664 lm	2,700/3,000/4,000/5,000/6,000 K	Nickel	8-7/8" x 1-3/4"	Wet location	-	ETL(4001256)
ASD-MPR-9D18BK	9 inch	18 W	120 V	TRIAC	1,664 lm	2,700/3,000/4,000/5,000/6,000 K	Black	8-7/8" x 1-3/4"	Wet location	-	ETL(4001256)
ASD-MPR-9D18CC-WH	9 inch	18 W	120 V	TRIAC	1,614 lm	3,000/4,000/5,000 K	White	8-7/8" x 1"	Damp location	-	ETL(4001256)
ASD-MPR-9D18CC-BK	9 inch	18 W	120 V	TRIAC	1,614 lm	3,000/4,000/5,000 K	Black	8-7/8" x 1"	Damp location	-	ETL(4001256)
ASD-MPR-9D18CC-WH-6PACK	9 inch	18 W	120 V	TRIAC	1,614 lm	3,000/4,000/5,000 K	White	8-7/8" x 1"	Damp location	-	ETL(4001256)
ASD-MPR-9D18CC-BR-6PACK	9 inch	18 W	120 V	TRIAC	1,614 lm	3,000/4,000/5,000 K	Bronze	8-7/8" x 1"	Damp location	-	ETL(4001256)
ASD-MPR-9D18CC-BK-6PACK	9 inch	18 W	120 V	TRIAC	1,614 lm	3,000/4,000/5,000 K	Black	8-7/8" x 1"	Damp location	-	ETL(4001256)
ASD-MPR-12D24WH	12 inch	24 W	120 V	TRIAC	2,145 lm	2,700/3,000/4,000/5,000/6,000 K	White	11-13/16" x 1"	Wet location	-	ETL(4001256)
ASD-MPR-12D24NK	12 inch	24 W	120 V	TRIAC	2,145 lm	2,700/3,000/4,000/5,000/6,000 K	Nickel	11-13/16" x 1"	Wet location	-	ETL(4001256)
ASD-MPR-12D24BK	12 inch	24 W	120 V	TRIAC	2,145 lm	2,700/3,000/4,000/5,000/6,000 K	Black	11-13/16" x 1"	Wet location	-	ETL(4001256)
ASD-MPR-12D24CC-WH	12 inch	24 W	120 V	TRIAC	2,333 lm	3,000/4,000/5,000 K	White	11-13/16" x 1"	Damp location	-	ETL(4001256)
ASD-MPR-12D24CC-BR	12 inch	24 W	120 V	TRIAC	2,333 lm	3,000/4,000/5,000 K	Bronze	11-13/16" x 1"	Damp location	-	ETL(4001256)
ASD-MPR-12D24CC-BK	12 inch	24 W	120 V	TRIAC	2,333 lm	3,000/4,000/5,000 K	Black	11-13/16" x 1"	Damp location	-	ETL(4001256)
ASD-MPR-MV-12D24WH	12 inch	24 W	120-277 V	TRIAC	2,069 lm	2,700/3,000/4,000/5,000/6,000 K	White	11-15/16" x 1"	Damp location	-	ETL(4001256)
ASD-MPR-MV-12D24BK	12 inch	24 W	120-277 V	TRIAC	2,069 lm	2,700/3,000/4,000/5,000/6,000 K	Black	11-15/16" x 1"	Damp location	-	ETL(4001256)
ASD-MPR-15D28WH	15 inch	28 W	120-277 V	TRIAC	2,373lm	2,700/3,000/4,000/5,000/6,000 K	White	14-15/16" x 1-3/16"	Wet location	-	ETL(4001256)
ASD-MPR-18D32WH	18 inch	32 W	120-277 V	TRIAC	2,687 lm	2,700/3,000/4,000/5,000/6,000 K	White	17-15/16" x 1-3/16"	Wet location	-	ETL(4001256)
ASD-MPR-24D38WH	24 inch	38 W	120-277 V	TRIAC	2,760 lm	2,700/3,000/4,000/5,000/6,000 K	White	24" x 1-3/16"	Wet location	-	ETL(4001256)
ASD-MPR-32D45WH	32 inch	45 W	120-277 V	TRIAC	3,902 lm	2,700/3,000/4,000/5,000/6,000 K	White	31-15/16" x 1-3/16"	Wet location	-	ETL(4001256)
MPR-MS ROUND WITH MOTION SENSOR											
ASD-MPR-7N15WH-MS	7 inch	15 W	120V	-	905lm	2,700/3,000/4,000/5,000/6,000K	White	7-1/16" x 7/8"	Damp location	Motion sensor	ETL(4001256)
ASD-MPR-9N18WH-MS	9 inch	18 W	120V	-	1,333lm	2,700/3,000/4,000/5,000/6,000K	White	8-3/4" x 7/8"	Damp location	Motion sensor	ETL(4001256)
ASD-MPR-9N18CC-MS-WH	9 inch	18 W	120V	-	1,430lm	3,000/4,000/5,000K	White	8-3/4" x 3/4"	Damp location	Motion sensor	ETL(4001256)
ASD-MPR-12N24WH-MS	12 inch	24 W	120V	-	1,788lm	2,700/3,000/4,000/5,000/6,000K	White	12" x 3/4"	Damp location	Motion sensor	ETL(5032534)
MPR-EM ROUND WITH BATTERY BACK-UP											
ASD-MPR-7D15CC-EM-WH	7 inch	15 W	120 V	TRIAC	1,209 lm	3,000/4,000/5,000 K	White	7-1/16" x 1-3/4"	Damp location	6W Battery back up	ETL(4001256)
ASD-MPR-7D15WH-EM	7 inch	15 W	120 V	TRIAC	1,267 lm	2,700/3,000/4,000/5,000/6,000 K	White	7-1/16" x 1-3/4"	Damp location	6W Battery back up	ETL(4001256)
ASD-MPR-9D18CC-EM-WH	9 inch	18 W	120 V	TRIAC	1,674 lm	3,000/4,000/5,000 K	White	8-7/8" x 1-3/4"	Damp location	12W Battery back up	ETL(4001256)
ASD-MPR-9D18WH-EM	9 inch	18 W	120 V	TRIAC	1,664 lm	2,700/3,000/4,000/5,000/6,000 K	White	8-7/8" x 1-3/4"	Damp location	6W Battery back up	ETL(4001256)
ASD-MPR-12D24WH-EM	12 inch	24 W	120 V	TRIAC	2,164 lm	2,700/3,000/4,000/5,000/6,000 K	White	12" x 1-3/4"	Damp location	12W Battery back up	ETL(5032534)
MPO OVAL											
ASD-MPO-32D45WH	32 inch	45 W	120-277V	TRIAC	3,368lm	2,700/3,000/4,000/5,000/6,000K	White	31-7/8" x 17-13/16" x 1-3/16"	Wet location	-	ETL(4001256)
ACCESSORIES											
ASD-SP7-MPR-WH	Sub-plate for 7"							7-1/8" x 1-3/4"	-	-	-
ASD-SP9-MPR-WH	Sub-plate for 9"							8-7/8" x 1-1/4"	-	-	-
ASD-SP12-MPR-WH	Sub-plate for 12"							11-13/16" x 1-1/4"	-	-	-

TECHNICAL PARAMETERS:

Model	Operating temperature	Power factor	Beam angle	Surge protection	Housing	Lens	CRI
MPR ROUND							
ASD-MPR-5D10WH	-4°F to 113°F (-20°C to 45°C)	> 0.9	110°	1.25kV	Plastic	Acrylic	> 80
ASD-MPR-5D10BK	-4°F to 113°F (-20°C to 45°C)	> 0.9	110°	1.25kV	Plastic	Acrylic	> 80
ASD-MPR-5D10CC-WH-6PACK	-4°F to 113°F (-20°C to 45°C)	> 0.9	110°	1.25kV	Plastic	Acrylic	> 80
ASD-MPR-5D10CC-BR-6PACK	-4°F to 113°F (-20°C to 45°C)	> 0.9	110°	1.25kV	Plastic	Acrylic	> 80
ASD-MPR-5D10CC-BK-6PACK	-4°F to 113°F (-20°C to 45°C)	> 0.9	110°	1.25kV	Plastic	Acrylic	> 80
ASD-MPR-7D15WH	-4°F to 113°F (-20°C to 45°C)	> 0.9	110°	1.25kV	Plastic	Acrylic	> 80
ASD-MPR-7D15NK	-4°F to 113°F (-20°C to 45°C)	> 0.9	110°	1.25kV	Plastic	Acrylic	> 80
ASD-MPR-7D15BK	-4°F to 113°F (-20°C to 45°C)	> 0.9	110°	1.25kV	Plastic	Acrylic	> 80
ASD-MPR-7D15CC-WH	-4°F to 113°F (-20°C to 45°C)	> 0.9	110°	1.25kV	Plastic	Acrylic	> 80
ASD-MPR-7D15CC-BK	-4°F to 113°F (-20°C to 45°C)	> 0.9	110°	1.25kV	Plastic	Acrylic	> 80
ASD-MPR-7D15CC-WH-6PACK	-4°F to 113°F (-20°C to 45°C)	> 0.9	110°	1.25kV	Plastic	Acrylic	> 80
ASD-MPR-7D15CC-BR-6PACK	-4°F to 113°F (-20°C to 45°C)	> 0.9	110°	1.25kV	Plastic	Acrylic	> 80
ASD-MPR-7D15CC-BK-6PACK	-4°F to 113°F (-20°C to 45°C)	> 0.9	110°	1.25kV	Plastic	Acrylic	> 80
ASD-MPR-9D18WH	-4°F to 113°F (-20°C to 45°C)	> 0.9	110°	1.25kV	Plastic	Acrylic	> 80
ASD-MPR-9D18NK	-4°F to 113°F (-20°C to 45°C)	> 0.9	110°	1.25kV	Plastic	Acrylic	> 80

For most up-to-date spec sheets please refer to asd-lighting.com



LED EDGE LIT PANEL

Model	Operating temperature	Power factor	Beam angle	Surge protection	Housing	Lens	CRI
ASD-MPR-9D18BK	-4°F to 113°F (-20°C to 45°C)	> 0.9	110°	1.25kV	Plastic	Acrylic	> 80
ASD-MPR-9D18CC-WH	-4°F to 113°F (-20°C to 45°C)	> 0.9	110°	1.25kV	Plastic	Acrylic	> 80
ASD-MPR-9D18CC-BK	-4°F to 113°F (-20°C to 45°C)	> 0.9	110°	1.25kV	Plastic	Acrylic	> 80
ASD-MPR-9D18CC-WH-6PACK	-4°F to 113°F (-20°C to 45°C)	> 0.9	110°	1.25kV	Plastic	Acrylic	> 80
ASD-MPR-9D18CC-BR-6PACK	-4°F to 113°F (-20°C to 45°C)	> 0.9	110°	1.25kV	Plastic	Acrylic	> 80
ASD-MPR-9D18CC-BK-6PACK	-4°F to 113°F (-20°C to 45°C)	> 0.9	110°	1.25kV	Plastic	Acrylic	> 80
ASD-MPR-12D24WH	-4°F to 113°F (-20°C to 45°C)	> 0.9	110°	1.25kV	Plastic	Acrylic	> 80
ASD-MPR-12D24NK	-4°F to 113°F (-20°C to 45°C)	> 0.9	110°	1.25kV	Plastic	Acrylic	> 80
ASD-MPR-12D24BK	-4°F to 113°F (-20°C to 45°C)	> 0.9	110°	1.25kV	Plastic	Acrylic	> 80
ASD-MPR-12D24CC-WH	-4°F to 113°F (-20°C to 45°C)	> 0.9	110°	1.25kV	Plastic	Acrylic	> 80
ASD-MPR-12D24CC-BR	-4°F to 113°F (-20°C to 45°C)	> 0.9	110°	1.25kV	Plastic	Acrylic	> 80
ASD-MPR-12D24CC-BK	-4°F to 113°F (-20°C to 45°C)	> 0.9	110°	1.25kV	Plastic	Acrylic	> 80
ASD-MPR-MV-12D24WH	-4°F to 113°F (-20°C to 45°C)	> 0.9	113°	2.5kV	Plastic	Acrylic	> 80
ASD-MPR-MV-12D24BK	-4°F to 113°F (-20°C to 45°C)	> 0.9	113°	2.5kV	Plastic	Acrylic	> 80
ASD-MPR-15D28WH	-4°F to 104°F (-20°C to 40°C)	> 0.9	115°	2.5kV	Plastic	Acrylic	> 90
ASD-MPR-18D32WH	-4°F to 104°F (-20°C to 40°C)	> 0.9	115°	2.5kV	Plastic	Acrylic	> 90
ASD-MPR-24D38WH	-4°F to 104°F (-20°C to 40°C)	> 0.9	115°	2.5kV	Plastic	Acrylic	> 90
ASD-MPR-32D45WH	-4°F to 104°F (-20°C to 40°C)	> 0.9	115°	2.5kV	Plastic	Acrylic	> 90
MPR-MS ROUND WITH MOTION SENSOR							
ASD-MPR-7N15WH-MS	-4°F to 104°F (-20°C to 40°C)	> 0.9	110°	2.5kV	Plastic	Acrylic	> 80
ASD-MPR-9N18WH-MS	-4°F to 104°F (-20°C to 40°C)	> 0.9	110°	2.5kV	Plastic	Acrylic	> 80
ASD-MPR-9N18CC-MS-WH	-4°F to 113°F (-20°C to 45°C)	> 0.9	110°	2.5kV	Plastic	Acrylic	> 80
ASD-MPR-12N24WH-MS	-4°F to 104°F (-20°C to 40°C)	> 0.9	112°	2.5kV	Plastic	Acrylic	> 80
MPR-EM ROUND WITH BATTERY BACK-UP							
ASD-MPR-7D15WH-EM	-4°F to 113°F (-20°C to 45°C)	> 0.9	110°	1.25kV	Plastic	Acrylic	> 80
ASD-MPR-7D15CC-EM-WH	-4°F to 113°F (-20°C to 45°C)	> 0.9	110°	1.25kV	Plastic	Acrylic	> 80
ASD-MPR-9D18WH-EM	-4°F to 113°F (-20°C to 45°C)	> 0.9	110°	1.25kV	Plastic	Acrylic	> 80
ASD-MPR-9D18CC-EM-WH	-4°F to 113°F (-20°C to 45°C)	> 0.9	110°	1.25kV	Plastic	Acrylic	> 80
ASD-MPR-12D24WH-EM	-4°F to 104°F (-20°C to 40°C)	> 0.9	112°	2.5kV	Plastic	Acrylic	> 80
MPO OVAL							
ASD-MPO-32D45WH	-4°F to 104°F (-20°C to 40°C)	> 0.9	115°	2.5kV	Plastic	Acrylic	> 90

DIMMING COMPATIBLE CONTROLS:

Brand	Lutron		Leviton		Maxxima	for MV and 15-32' models		
						Lutron	Leviton	Calibration
Models	MACL-153MLH-WH	DVCL-153PR	R02-DW6HD-2RW	66721LW	MEW-DM600	MACL-153MLH-WH	MRF2-6CL	RHCL453PNICCV4
	STCL-153PH-WH	AYCL-153P	R00-RNL06-0TW	DSL06		STCL-153PH-WH	DDMX1	
	PD-6WCL-WH-R	P-PKG1W	R68-06674-POT			P-PKG1W-WH-P		
	TGCL-153PH-LA	SCL-153P	6674-POW			R11-DSL06-1TW		

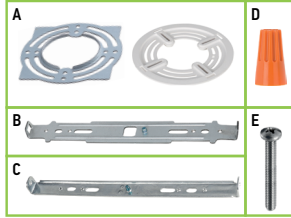
* The list of dimmers is relevant for models without a motion sensor.

For most up-to-date spec sheets please refer to asd-lighting.com

ASD[®] LED EDGE LIT PANEL

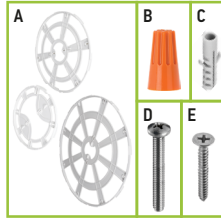
PACKAGE CONTENTS FOR ROUND 5-12" MODELS

Description	Quantity
LED Round Edge Lit Panel	1
Mounting plate (A) for regular models	1
Bracket (B) for MS model	1
Bracket (C) for EM models	1
Wire nut (D)	3
Screw (E)	2
Box	1



PACKAGE CONTENTS FOR ROUND 15-32" MODELS

Description	Quantity
LED Round Edge Lit Panel	1
Mounting plate (A)	1
Wire nut (B)	2
Anchor (C)	4 for 15-18"; 6 for 24"; 8 for 32"
Screw (D)	2
Self-taping screw (E)	4 for 15-18"; 6 for 24"; 8 for 32"
Box	1



BUILT-IN MOTION SENSOR INFORMATION

Sensor has two selectable modes:

Day mode:

The light is ON only when motion detected.

The light sensing option is OFF.

Detection range: 9.8 - 16.4 ft

Time: 45 sec.

Night Mode:

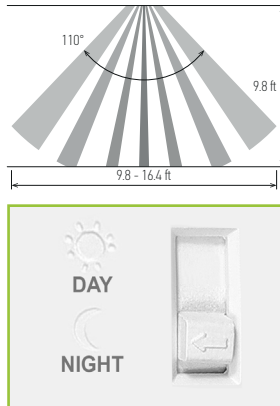
The light is ON when illumination is < 70 lux

(6.5 fc) and motion detected.

Detection range: 9.8-16.4 ft

Time: 45 sec.

If illumination is > 200 lux (18.6 fc) the light is always OFF.



⚠ RF interference may affect the operation of this sensor.

ACCESSORIES (sold separately):

Retrofit kit with E26 base and TP24 connector for 5"

ASD-RK4-MPR



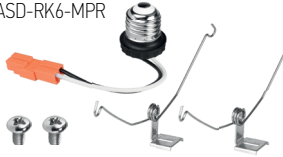
Battery back-up kit 13W

ASD-EMK13-LDS



Retrofit kit with E26 base and TP24 connector for 7", 9", 12"

ASD-RK6-MPR



Hanging mounting set

for 15-18"
ASD-HS15-MPR

for 24"
ASD-HS24-MPR

for 32"
ASD-HS32-MPR

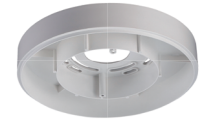


Sub-plate

for 7"
ASD-SP7-MPR

for 9"
ASD-SP9-MPR

for 12"
ASD-SP12-MPR



ACCESSORY COMPATIBILITY LIST:

Accessories	Models								
	5"	7"	9"	12"	15"	18"	24"	32"	
Retrofit kit with E26 base and TP24 connector for 5" ASD-RK4-MPR	•								
Retrofit kit with E26 base and TP24 connector for 7", 9", 12" ASD-RK6-MPR		•	•	•					
Battery back-up kit 13W ASD-EMK13-LDS		•	•	•					
Sub-plate for 7" ASD-SP7-MPR			•						
Sub-plate for 9" ASD-SP9-MPR				•					
Sub-plate for 12" ASD-SP12-MPR					•				
Hanging mounting set 15-18" ASD-HS15-MPR						•			
Hanging mounting set 24" ASD-HS24-MPR							•		
Hanging mounting set 32" ASD-HS32-MPR								•	
ASD-MPR									
ASD-MPR-MS									
ASD-MPR-EM									

For most up-to-date spec sheets please refer to asd-lighting.com



LED EDGE LIT PANEL

INSTALLATION GUIDE

IMPORTANT SAFETY INFORMATION:

Please read all the instructions below before installation!

- ▶ Make sure that the supply voltage corresponds to the rated product voltage.
- ▶ The product must be installed by a qualified electrician in accordance with the National Electrical Code and corresponding local codes.
- ▶ If the product is damaged, do not use it.

⚠ WARNING

Risk of personal injury – read and follow all warnings and installation instructions. Keep or give to the owner for future reference.

Risk of cuts: Wear gloves to prevent cuts or abrasions when removing from carton, handling, installing, and maintaining this product.

Risk of electric shock: This product must be installed in accordance with the applicable installation code by a person familiar with the construction and operation of the product and the hazards involved.

Risk of Fire: Minimum 194°F supply conductors. Consult a qualified electrician to ensure correct branch circuit conductor.



ASD® assumes no responsibility for claims arising out of improper or careless installation or handling of this product.

BUILT-IN BATTERY BACK-UP INFORMATION

Specifications		
Input voltage	100-277 V 50/60 Hz	
Voltage	20-36 Vdc	20-36 Vdc
Input current	max 110 mA	
Output current	200 mA	360 mA
Input power rating	max 5.0W	
Output power	6W	12W
Lumens	400 lm	600 lm
Emergency time	min 90 minutes	
Indicator light	Illuminated test switch	
Battery	Li-ion battery - 11.1 V/2200 mAh	
Charging current	440 mA	
Charging time	8 hours	
Temperature rating (Ambient)	32°F to 113°F (0°C to 45°C)	
Warranty	5 years	

STANDARD OPERATION DISPLAY STATUS:

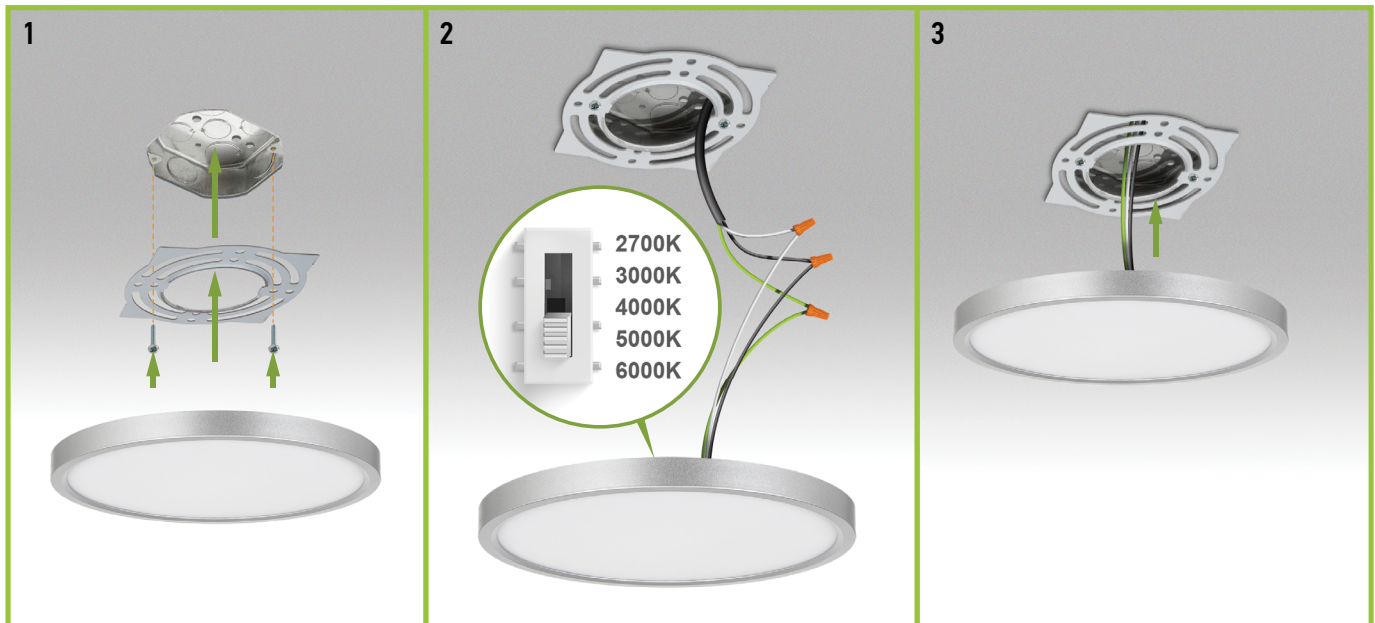


Button	Remarks
	Blinking Operating condition
	OFF Emergency mode Test switch

1. Indicator light is blinking: battery back-up recharging.
2. Indicator light is OFF: battery back-up is full charge; battery back-up is working.
3. In order to test the battery back-up press the test switch one time. To turn off the emergency power state press test switch one more time.

ROUND MODELS INSTALLATION FOR MPR 5-12 INCH:

1. Remove the mounting plate from the fixture and attach it to the existing outlet box in the ceiling using two screws.
2. Choose preferred color temperature by adjusting the switch. Connect the wires: Black to Black, White to White, Green to Green. Secure the connection with wire nuts.
3. Insert the fixture to the bracket until it clicks.



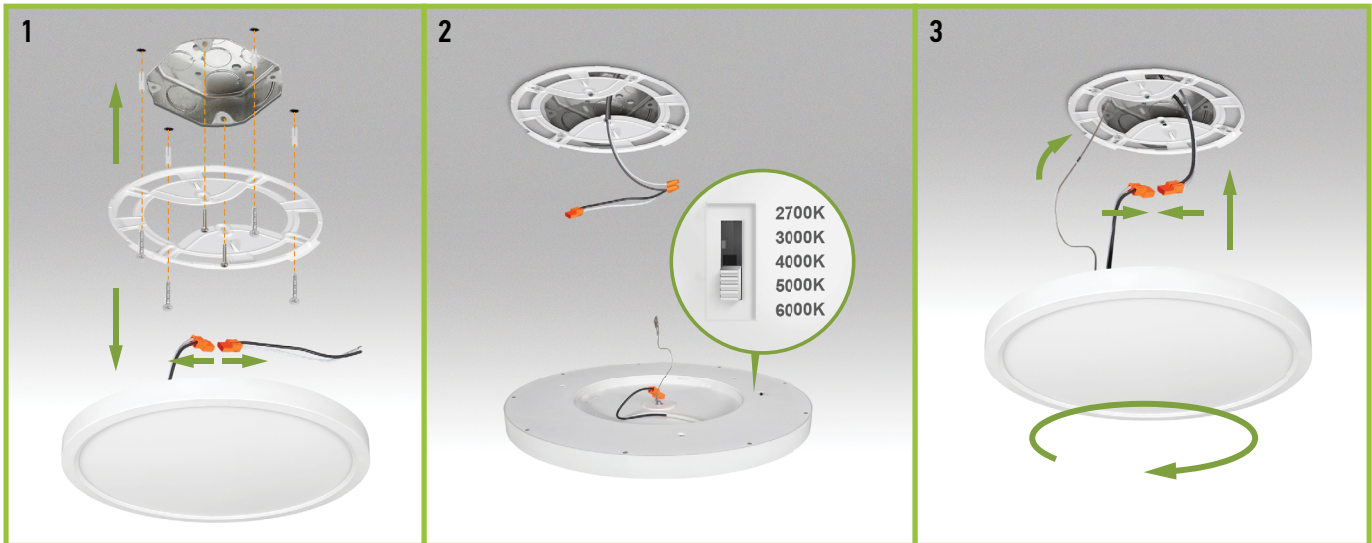
For most up-to-date spec sheets please refer to asd-lighting.com



LED EDGE LIT PANEL

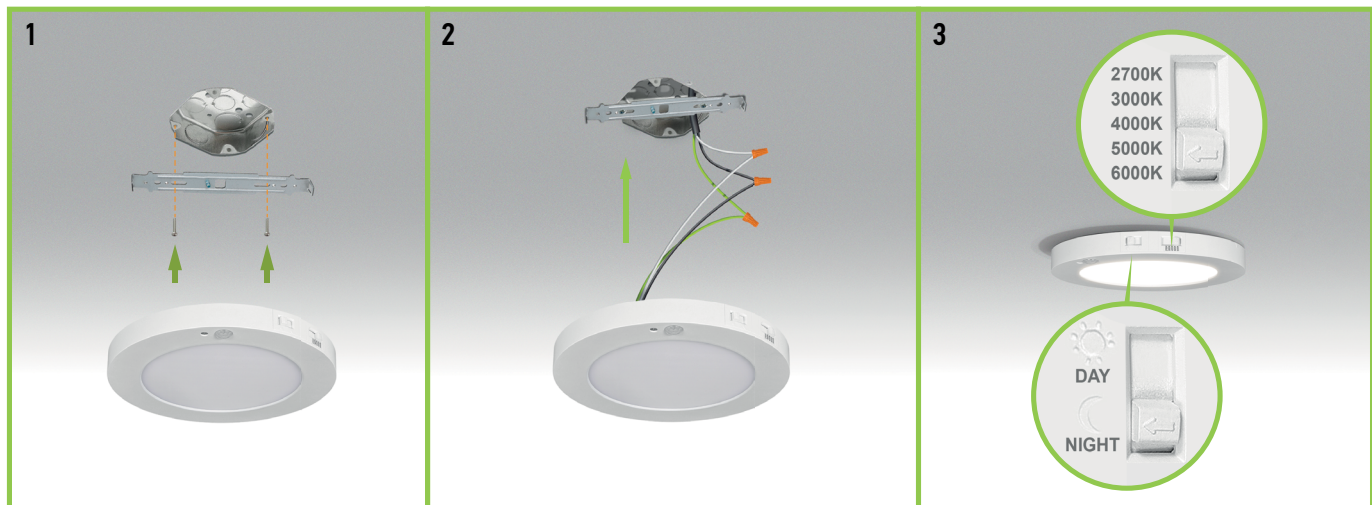
ROUND MODELS INSTALLATION FOR MPR 15-32 INCH:

1. Disconnect the orange pluggable connector. Remove the mounting plate from the fixture and attach it to the existing outlet box in the ceiling using two mounting screws. Drill four 5/16" size holes on the ceiling for 15" and 18" models, six holes for 24 model, eight holes for 32" model, which will match with the holes on the mounting bracket. Insert drywall anchors into each drilled mounting hole.
2. Choose preferred color temperature by adjusting the switch. Connect the wires: Black to Black, White to White. Secure the connection with wire nuts.
3. Hang the safety hook on the mounting plate. Connect the orange pluggable connector on the lamp base to the pluggable connector that is already plugged into the supply wires. Put all wires into the outlet box. Insert the lamp to the bracket and rotate the fixture base clockwise until it click.



MOTION SENSOR MODELS INSTALLATION MPR-MS 7-9 INCH:

1. Attach the bracket to the existing outlet box in the ceiling using two screws.
2. Connect the wires: Black to Black, White to White, Green to Green. Secure the connection with wire nuts. Insert the fixture to the bracket until it clicks.
3. Choose preferred color temperature and motion sensor setting by adjusting switch position on the side of the fixture.



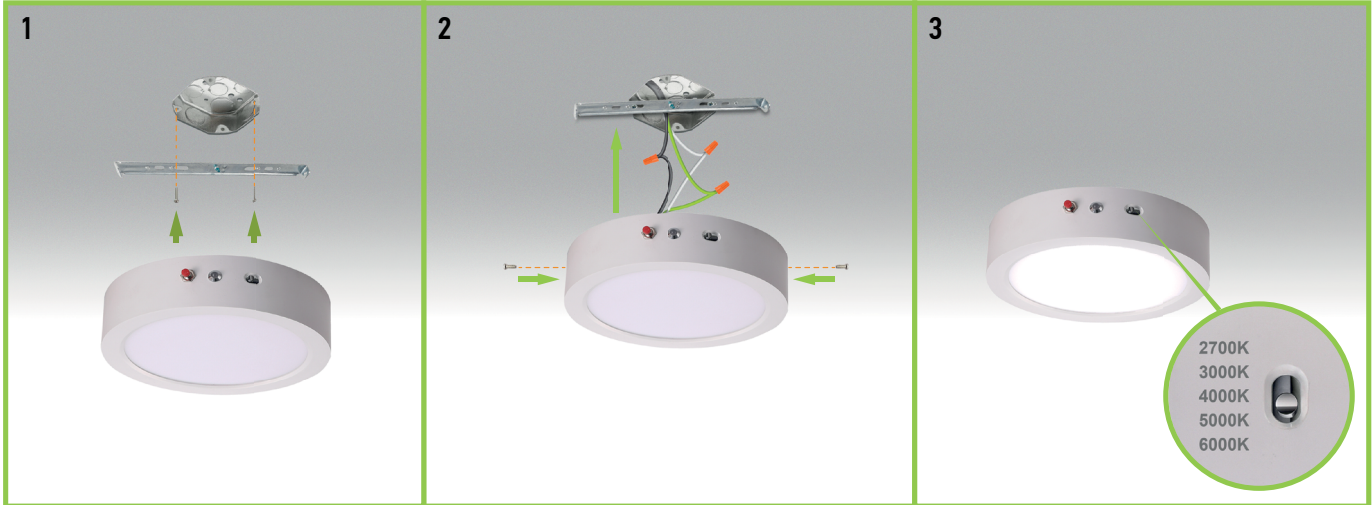
For most up-to-date spec sheets please refer to asd-lighting.com



LED EDGE LIT PANEL

BATTERY BACK-UP MODELS INSTALLATION 7-12 INCH:

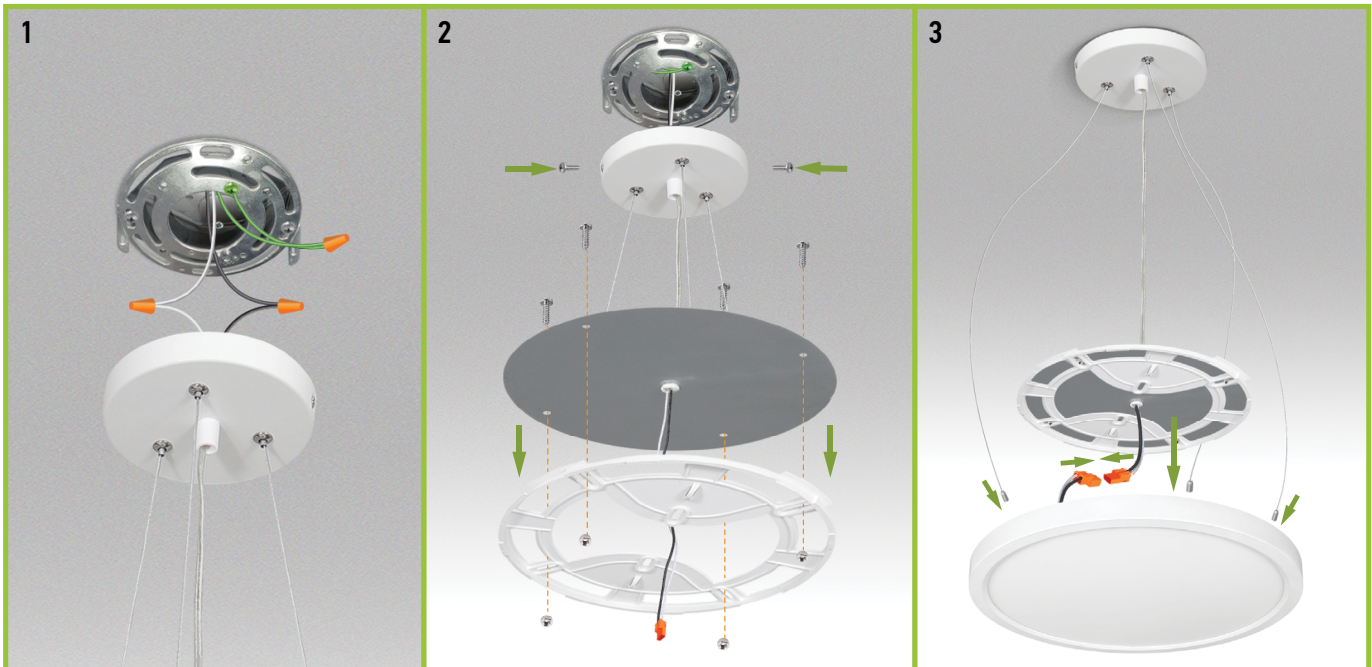
1. Attach the bracket to the existing outlet box in the ceiling using two screws
2. Connect the wires: Black to Black, White to White, Green to Green. Secure the connection with wire nuts. Insert the fixture into the bracket and fix it with two fixture screws on both sides of the lamp.
3. Choose needed color temperature by adjusting switch position on the side of the fixture.



PENDANT INSTALLATION:

ASD-HS15-MPR ASD-HS24-MPR ASD-HS32-MPR sold separately

1. Disconnect the orange pluggable connector. Attach the mounting bracket to the outlet using the slotted holes on the mounting bracket and the mounting screws.
2. Connect the power supply wires to the fixture lead wires by connecting the black to the extended black wire, and the white to the extended white wire using nuts. Connect the ground wire to the house ground wire by fixed on the mounting bracket. Put all wiring back into the outlet box. Place the ceiling pan over outlet box, insert the two fixture screws, and tighten to secure the ceiling pan to the ceiling. Use the hex nut and panel screw to tighten the panel and bracket.
3. Connect the orange pluggable connector on the lamp base to the pluggable connector that is already plugged into the supply wires. Rotate the pendant holder clockwise until it is tightened into the fixture base.



For most up-to-date spec sheets please refer to asd-lighting.com

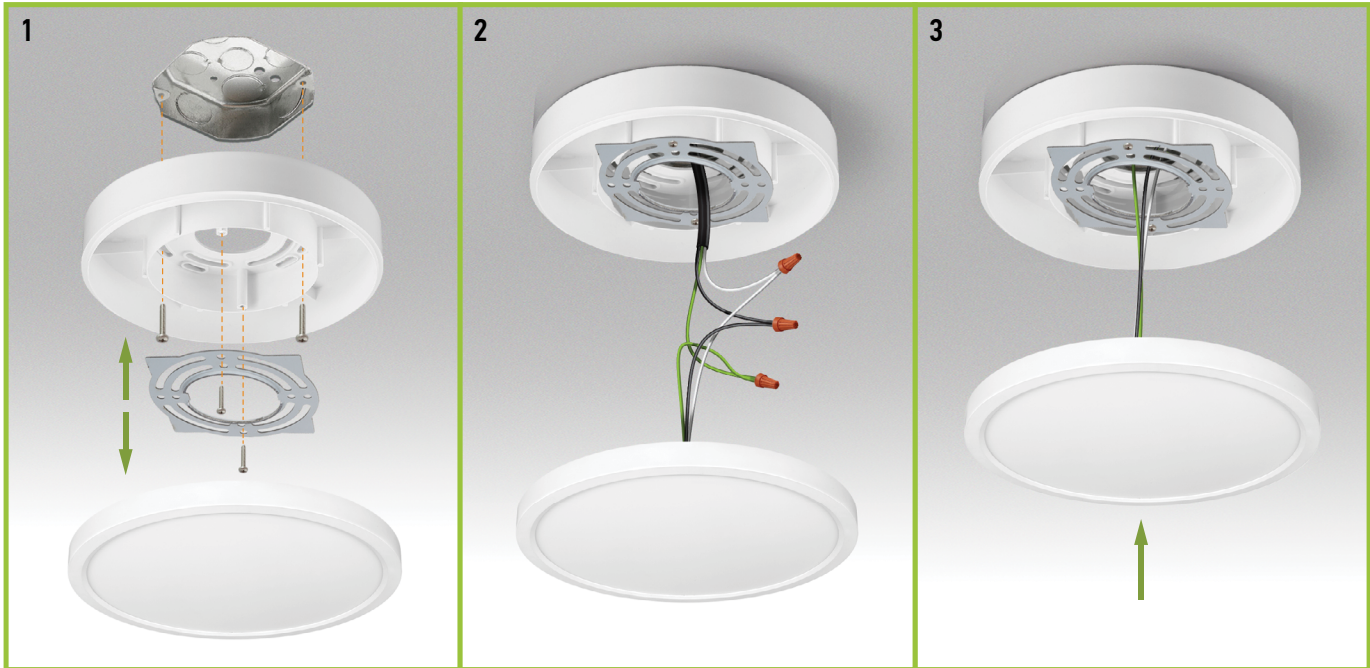


LED EDGE LIT PANEL

SUB-PLATE INSTALLATION:

ASD-SP7-MPR ASD-SP9-MPR ASD-SP12-MPR sold separately

1. Place the subplate on the outlet box in the ceiling and fix it using two screws. Remove the mounting plate from the LED fixture and attach it to the sub-plate with another two screws.
2. Choose preferred color temperature by adjusting the switch. Connect the wires: Black to Black, White to White, Green to Green. Secure the connection with wire nuts.
3. Insert the fixture in to the mounting plate until it clicks.



ORDERING INFORMATION

Model	Product dimensions	Weight	Pcs. (pack) per carton	Carton size	Carton weight	UPC	GTIN 14
MPR ROUND							
ASD-MPR-5D10WH	5-5/16" x 1"	0.2 lbs (0.1 kg)	6	10" x 6.7" x 6.1"	1.7 lbs	810128116299	10810128116296
ASD-MPR-5D10BK	5-5/16" x 1"	0.2 lbs (0.1 kg)	6	10" x 6.7" x 6.1"	1.7 lbs	810128116282	10810128116289
ASD-MPR-5D10CC-WH-6PACK	5-5/16" x 1"	3.4 lbs (1.5 kg)	12 (2)	15.2" x 7.9" x 6.9"	8.2 lbs	810050737654	10810050737651
ASD-MPR-5D10CC-BR-6PACK	5-5/16" x 1"	3.4 lbs (1.5 kg)	12 (2)	15.2" x 7.9" x 6.9"	8.2 lbs	810128111720	10810128111727
ASD-MPR-5D10CC-BK-6PACK	5-5/16" x 1"	3.4 lbs (1.5 kg)	12 (2)	15.2" x 7.9" x 6.9"	8.2 lbs	810128110389	10810128110386
ASD-MPR-7D15WH	7-1/16" x 1"	0.8 lbs (0.4 kg)	6	10" x 8.5" x 7.9"	5.3 lbs	810128115117	10810128115114
ASD-MPR-7D15NK	7-1/16" x 1"	0.8 lbs (0.4 kg)	6	10" x 8.5" x 7.9"	5.3 lbs	810128118958	10810128118955
ASD-MPR-7D15BK	7-1/16" x 1"	0.8 lbs (0.4 kg)	6	10" x 8.5" x 7.9"	5.3 lbs	810128117111	10810128117118
ASD-MPR-7D15CC-WH	7-1/16" x 1"	0.8 lbs (0.4 kg)	12	16.5" x 10" x 7.9"	12.6 lbs	810050736275	30810050736276
ASD-MPR-7D15CC-BK	7-1/16" x 1"	0.8 lbs (0.4 kg)	12	16.5" x 10" x 7.9"	12.6 lbs	810050736732	30810050736733
ASD-MPR-7D15CC-WH-6PACK	7-1/16" x 1"	4.9 lbs (2.2 kg)	12 (2)	15.6" x 9.7" x 8.7"	12.2 lbs	810050737661	10810050737668
ASD-MPR-7D15CC-BR-6PACK	7-1/16" x 1"	4.9 lbs (2.2 kg)	12 (2)	15.6" x 9.7" x 8.7"	12.2 lbs	810128111744	10810128111741
ASD-MPR-7D15CC-BK-6PACK	7-1/16" x 1"	4.9 lbs (2.2 kg)	12 (2)	15.6" x 9.7" x 8.7"	12.2 lbs	810050737029	10810050737026
ASD-MPR-9D18WH	8-7/8" x 1-3/4"	0.9 lbs (0.4 kg)	6	10.2" x 10" x 9.7"	7.2 lbs	810128117142	10810128117149
ASD-MPR-9D18NK	8-7/8" x 1-3/4"	0.9 lbs (0.4 kg)	6	10.2" x 10" x 9.7"	7.2 lbs	810128118965	10810128118962
ASD-MPR-9D18BK	8-7/8" x 1-3/4"	0.9 lbs (0.4 kg)	6	10.2" x 10" x 9.7"	7.2 lbs	810128117135	10810128117132
ASD-MPR-9D18CC-WH	8-7/8" x 1"	1.1 lbs (0.5 kg)	12	19.7" x 10.2" x 9.7"	17.2 lbs	810050734622	30810050734623

For most up-to-date spec sheets please refer to asd-lighting.com

ASD LIGHTING CORP

E-mail: orders@asd-lighting.com | Web site: www.asd-lighting.com





LED EDGE LIT PANEL

Model	Product dimensions	Weight	Pcs. (pack) per carton	Carton size	Carton weight	UPC	GTIN 14
ASD-MPR-9D18CC-BK	8-7/8" x 1"	1.1 lbs (0.5 kg)	12	19.7" x 10.2" x 9.7"	17.2 lbs	810050736749	30810050736740
ASD-MPR-9D18CC-WH-6PACK	8-7/8" x 1"	6.7 lbs (3 kg)	12 (2)	15.6" x 11.4" x 10"	15.7 lbs	810050737678	10810050737675
ASD-MPR-9D18CC-BR-6PACK	8-7/8" x 1"	6.7 lbs (3 kg)	12 (2)	15.6" x 11.4" x 10"	15.7 lbs	810128111768	10810128111765
ASD-MPR-9D18CC-BK-6PACK	8-7/8" x 1"	6.7 lbs (3 kg)	12 (2)	15.6" x 11.4" x 10"	15.7 lbs	819201026753	10819201026750
ASD-MPR-12D24WH	11-13/16" x 1"	2.2 lbs (1 kg)	4	13.2" x 6.9" x 12.6"	10.5 lbs	810128117166	10810128117163
ASD-MPR-12D24NK	11-13/16" x 1"	2.2 lbs (1 kg)	4	13.2" x 6.9" x 12.6"	10.5 lbs	810128118972	10810128118979
ASD-MPR-12D24BK	11-13/16" x 1"	2.2 lbs (1 kg)	4	13.2" x 6.9" x 12.6"	10.5 lbs	810128117159	10810128117156
ASD-MPR-12D24CC-WH	11-13/16" x 1"	2.2 lbs (1 kg)	4	13.2" x 6.9" x 12.6"	10.5 lbs	810050736299	30810050736290
ASD-MPR-12D24CC-BR	11-13/16" x 1"	2.2 lbs (1 kg)	4	13.2" x 6.9" x 12.6"	10.5 lbs	810128111836	10810128111833
ASD-MPR-12D24CC-BK	11-13/16" x 1"	2.2 lbs (1 kg)	4	13.2" x 6.9" x 12.6"	10.5 lbs	819201026760	10819201026767
ASD-MPR-MV-12D24WH	11-15/16" x 1"	1.5 lbs (0.7 kg)	4	13.2" x 6.7" x 13.4"	8.3 lbs	810128117722	10810128117729
ASD-MPR-MV-12D24BK	11-15/16" x 1"	1.5 lbs (0.7 kg)	4	13.2" x 6.7" x 13.4"	8.3 lbs	810128117715	10810128117712
ASD-MPR-15D28WH	14-15/16" x 1-3/16"	2.7 lbs (1.2 kg)	2	17.7" x 5.1" x 18.1"	7.9 lbs	810128117128	10810128117125
ASD-MPR-18D32WH	17-15/16" x 1-3/16"	3.5 lbs (1.6 kg)	2	20.9" x 5.1" x 21.3"	10.4 lbs	810128117296	10810128117293
ASD-MPR-24D38WH	24" x 1-3/16"	6.6 lbs (3 kg)	2	26.8" x 5.4" x 27.2"	18.1 lbs	810128117364	10810128117361
ASD-MPR-32D45WH	31-15/16" x 1-3/16"	10.8 lbs (4.9 kg)	2	35.2" x 6.7" x 35.6"	28.7 lbs	810128117371	10810128117378
MPR-MS ROUND WITH MOTION SENSOR							
ASD-MPR-7N15WH-MS	7-1/16" x 7/8"	0.7 lbs (0.3 kg)	12	15.6" x 8.7" x 7.9"	11.3 lbs	810128118996	10810128118993
ASD-MPR-9N18WH-MS	8-3/4" x 7/8"	0.9 lbs (0.4 kg)	12	19.7" x 8.7" x 9.8"	13.9 lbs	810128119009	10810128119006
ASD-MPR-9N18CC-MS-WH	8-3/4" x 3/4"	1 lbs (0.5 kg)	12	19.7" x 8.7" x 9.7"	16.3 lbs	810050734493	30810050734494
ASD-MPR-12N24WH-MS	12" x 3/4"	1.8 lbs (0.8 kg)	4	13.2" x 5.9" x 13.2"	9 lbs	810190200391	10810190200398
MPR-EM ROUND WITH BATTERY BACK-UP							
ASD-MPR-7D15WH-EM	7-1/16" x 1-3/4"	1.6 lbs (0.7 kg)	12	18.7" x 17.7" x 9.1"	22.6 lbs	810128116268	10810128116265
ASD-MPR-7D15CC-EM-WH	7-1/16" x 1-3/4"	1.6 lbs (0.7 kg)	12	18.7" x 17.7" x 9.1"	22.6 lbs	810050738040	10810050738047
ASD-MPR-9D18WH-EM	8-7/8" x 1-3/4"	2.1 lbs (1 kg)	12	21.3" x 18.9" x 10.8"	33 lbs	810128116275	10810128116272
ASD-MPR-9D18CC-EM-WH	8-7/8" x 1-3/4"	2.1 lbs (1 kg)	12	21.3" x 18.9" x 10.8"	33 lbs	810050738057	10810050738054
ASD-MPR-12D24WH-EM	12" x 1-3/4"	2.9 lbs (1.3 kg)	6	18.9" x 14.4" x 14.6"	21.5 lbs	810190200384	10810190200381
MPO OVAL							
ASD-MPO-32D45WH	31-7/8" x 17-13/16" x 1-3/16"	7.3 lbs (3.3 kg)	2	35" x 6.7" x 22.1"	20.7 lbs	810190200353	10810190200350

ACCESSORIES:

Model	Product dimensions	Pcs. in middle box	Middle box size	Middle box weight	Pcs. per carton	Carton size	Carton weight	UPC	GTIN 14 in middle box	GTIN 14 in carton
ASD-RK4-MPR	2-11/16" x 1/2" x 1-7/8"	12	7.1" x 5.1" x 5.7"	1.3 lbs	48	11" x 7.7" x 12.4"	6 lbs	810050731089	10810050731086	20810050731083
ASD-RK6-MPR	6-15/16" x 15/16" x 2-15/16"	12	7.1" x 5.1" x 5.7"	1.4 lbs	48	11" x 7.7" x 12.4"	6.3 lbs	810050731096	10810050731093	20810050731090
ASD-HS15-MPR-WH	12-15/16" x 12-15/16" x 7-1/16"	-	-	-	4	12.6" x 12.6" x 13"	1.8 lbs	810128119016	-	10810128119013
ASD-HS24-MPR-WH	16-7/8" x 16-7/8" x 7-1/16"	-	-	-	4	19.3" x 12.6" x 19.5"	13.5 lbs	810190200339	-	10810190200336
ASD-HS32-MPR-WH	23-9/16" x 23-9/16" x 7-1/16"	-	-	-	4	26.2" x 12.6" x 26.6"	18.5 lbs	810190200346	-	10810190200343
ASD-SP7-MPR-WH	7-1/16" x 7-1/16" x 1-3/4"	-	-	-	12	14.8" x 7.9" x 7.7"	5.1 lbs	810050738064	-	10810050738061
ASD-SP9-MPR-WH	8-7/8" x 8-7/8" x 1-1/4"	-	-	-	12	18.3" x 7.9" x 9.7"	6.4 lbs	810128118217	-	10810128118214
ASD-SP12-MPR-WH	11-13/16" x 11-13/16" x 1-1/4"	-	-	-	12	24.2" x 7.9" x 12.6"	9.9 lbs	810190200407	-	10810190200404

For most up-to-date spec sheets please refer to asd-lighting.com

ASD LIGHTING CORP

E-mail: orders@asd-lighting.com | Web site: www.asd-lighting.com

