



LED OUTDOOR NARROW WALL SCONCE WITH RGBW

LWS27N-SMART-RGBW series

► **DESIGN** - LED OUTDOOR NARROW WALL SCONCE WITH RGBW has a stylish, multipurpose design and a modern look with efficient lighting. The acrylic lens with a 350° beam angle grants you even light distribution. It is designed to operate on 120-277V circuits and provides smooth triac dimming ranging from 10% to 100%.

► **VARIETY** - The fixture comes in 24-inch and 48-inch design and available in Black and White finishes.

► **RGBW** - The fixture has RGBW design with APP control. You can easily select Red, Green, Blue, White (2700K-6500K) colors or its combinations, having 16.7 million colors in total. You can also choose lighting patterns and set up a schedule, having a great variety of good looking effects. All of it is easily controlled by Smart APP on your Smartphone. The fixture is also compatible with Alexa, Google Assistant and Siri.

► **INSTALLATION** - Quick and easy installation, the fixture can be installed on standard 2.75" or 3.5" outlet box. The additional mounting holes provide secure installation options.

► **APPLICATION** - The fixture is rated for Wet Locations, making it perfect for indoor and outdoor projects such as decks, front doors, porches, patios, corridors, walkways, or any other common areas.

► **ADVANTAGES** - With a lifespan of 50,000 hours, these fixtures are made to last decades under normal operation! ASD provides a 5-year limited warranty along with ETL certification to guarantee top quality products and safety!



PRODUCT PRESENTATION:

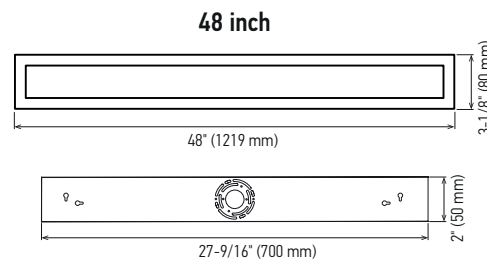
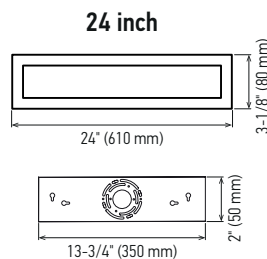
Model	Size	Power	Voltage	Dimming	Lumens	CCT	Finish	Dimensions	Certification
ASD-LWS27N-24D18SM-RGBW-BK	24 inch	18 W	120-277V	SMART APP	960lm	Red-Green-Blue-2700K-6500K	Black	24" x 3-1/8" x 2-1/4"	ETL(5032534)
ASD-LWS27N-48D36SM-RGBW-BK	48 inch	36 W	120-277V	SMART APP	1,979lm	Red-Green-Blue-2700K-6500K	Black	48" x 3-1/8" x 2-1/4"	ETL(5032534)

ORDERING INFORMATION

Model	Product dimensions	Weight	Pcs. (pack) per carton	Carton size	Carton weight	UPC	GTIN 14
ASD-LWS27N-24D18SM-RGBW-BK	24" x 3-1/8" x 2-1/4"	4.3 lbs(1.9kg)	2	27.17" x 7.09" x 8.86"	12.6 lbs	81012811467	10810128114674
ASD-LWS27N-48D36SM-RGBW-BK	48" x 3-1/8" x 2-1/4"	8.4 lbs(3.8kg)	1	50.98" x 4.53" x 7.28"	10.2 lbs	81012811470	-

TECHNICAL PARAMETERS:

Model	Work environment	Operating temperature	Power factor	Beam Angle	Surge protection	Housing	Lens	CRI
ASD-LWS27N-24D18SM-RGBW-BK	Wet location	-40°F to 113°F(-40°C to 45°C)	>0,9	352°	1kV	Steel	Acrylic	>80
ASD-LWS27N-48D36SM-RGBW-BK	Wet location	-40°F to 113°F(-40°C to 45°C)	>0,9	350°	1kV	Steel	Acrylic	>80



For most up-to-date spec sheets please refer to asd-lighting.com



LED OUTDOOR NARROW WALL SCONCE WITH RGBW

LWS27N-SMART-RGBW series



ASD Smart is an innovative solution for seamless control of lighting fixtures from ASD Lighting. With the mobile app, users can easily adjust brightness, change color temperature, and utilize RGB lighting to create the perfect ambiance.

The App supports **group control**, allowing multiple lights to work in sync, as well as the creation of **personalized lighting scenarios**. For added convenience, it integrates with **voice assistants** like Amazon Alexa, enabling hands-free lighting control.

This smart solution enhances **convenience, innovation, and energy efficiency** wherever it is used.

[ASD SMART APP](#)
[download Android](#)



[ASD SMART APP](#)
[download iOS](#)



[Smartphone manual](#)



FIXTURE CONTROL

Set brightness, change color temperature, use RGB lighting.



CUSTOM SCENARIOS

Allows you to apply scenes, scenarios or to create your own.



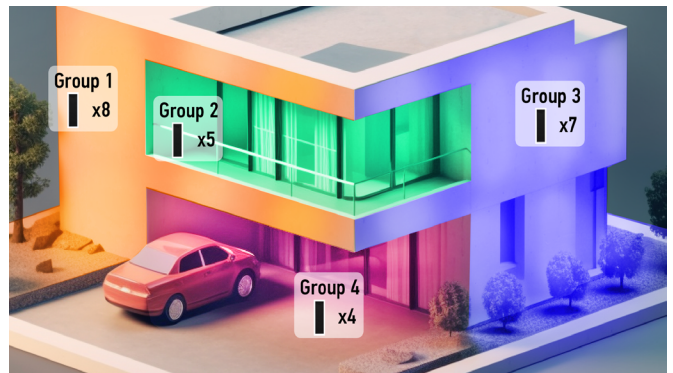
SCHEDULING

Set your lights to turn on and off exactly when you need them - by time of day and day of the week.



GROUP CONTROL

Control multiple lights as one - group devices together for seamless, synchronized lighting



For most up-to-date spec sheets please refer to asd-lighting.com

ASD LIGHTING CORP

E-mail: orders@asd-lighting.com | Web site: www.asd-lighting.com





LED OUTDOOR NARROW WALL SCONCE WITH RGBW

LWS27N-SMART-RGBW series

INSTALLATION GUIDE

IMPORTANT SAFETY INFORMATION:

Please read all the instructions below before installation!

- ▶ Make sure that the supply voltage corresponds to the rated product voltage.
- ▶ The product must be installed by a qualified electrician in accordance with the National Electrical Code and corresponding local codes.
- ▶ If the product is damaged, do not use it.

⚠ WARNING

Risk of personal injury – read and follow all warnings and installation instructions. Keep or give to the owner for future reference.

Risk of cuts: Wear gloves to prevent cuts or abrasions when removing from carton, handling, installing, and maintaining this product.

Risk of electric shock: This product must be installed in accordance with the applicable installation code by a person familiar with the construction and operation of the product and the hazards involved.

Risk of Fire: Minimum 194°F supply conductors. Consult a qualified electrician to ensure correct branch circuit conductor.

ASD® assumes no responsibility for claims arising out of improper or careless installation or handling of this product.

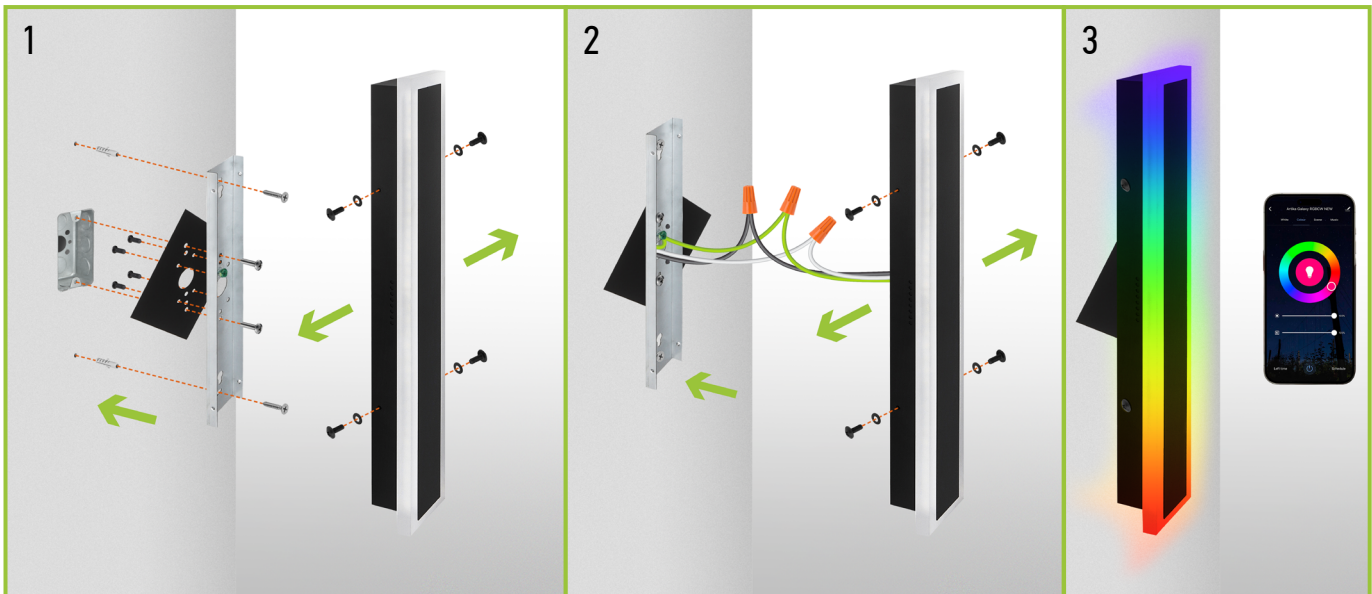
PACKAGE CONTENTS:

Description	Quantity
LED Outdoor Wall Sconce Narrow	1
Mounting plate (A)	1
Metal plate (B)	1
Mounting screw (C)	2
Self-tapping screw (D)	2
Metal plate screw (E)	4
Fixture screw (F)	4
Wire nut (G)	3
Waterproof gasket (H)	4
Anchor (I)	2
Box	1



INSTALLATION STEPS:

1. Unscrew the fixture screws from both sides and remove the mounting plate. The fixture can be installed on standard 2.75" or 3.5" outlet box. Attach the mounting plate to the outlet box and mark the location of the holes, drill the holes for anchors, insert anchors into the holes, twist the two self-tapping screws. Cover the outlet box with the decorative plate, attach the mounting plate using mounting screws, and tighten self-tapping screws.
2. Connect the wires: Black to Black, White to White, Ground to Ground. Secure the connection with wire nuts. Tuck all wires inside the outlet box. Put the waterproof gasket on each fixture screw. Place the wall sconce on the mounting plate and secure it using fixture screws.
3. The fixture has RGBW design with APP control. You can easily select Red, Green, Blue, White (2,700K - 6,500K) colors or its' combinations, having 16.7 million colors in total. All of it is easily controlled by Smart APP on your Smartphone.
For outdoor locations please use silicone (not included).



* please see manual by QR-code below

For most up-to-date spec sheets please refer to asd-lighting.com

ASD LIGHTING CORP

E-mail: orders@asd-lighting.com | Web site: www.asd-lighting.com

