



LED OUTDOOR WALL SCONCE WIDE ACRYLIC WITH RGBW

LWS27A-RGBW series

► **DESIGN** - LED OUTDOOR WALL SCONCE has a modern, multipurpose design and a stylish look with efficient lighting. Durable housing resistant to rust and impact provides many years of service. The acrylic lens with a 350° beam angle grants you even light distribution. It is designed to operate on 120-277V circuits and provides smooth triac dimming capabilities ranging from 10% to 100%.

► **VARIETY** - The fixture comes in 18, 24, 48 and 72-inch design.

► **RGBW** - The fixture has RGBW design with APP control. You can easily select Red, Green, Blue, White (2700K-6500K) colors or its' combinations, having 16.7 million colors in total. You can also choose lighting patterns and set up a schedule, having a great variety of good looking effects. All of it is easily controlled by Smart APP on your Smartphone. The fixture is also compatible with Alexa, Google Assistant and Siri.

► **INSTALLATION** - Quick and easy installation, the fixture can be installed on standard 2.75" or 3.5" outlet box. The additional mounting holes provide secure installation options.

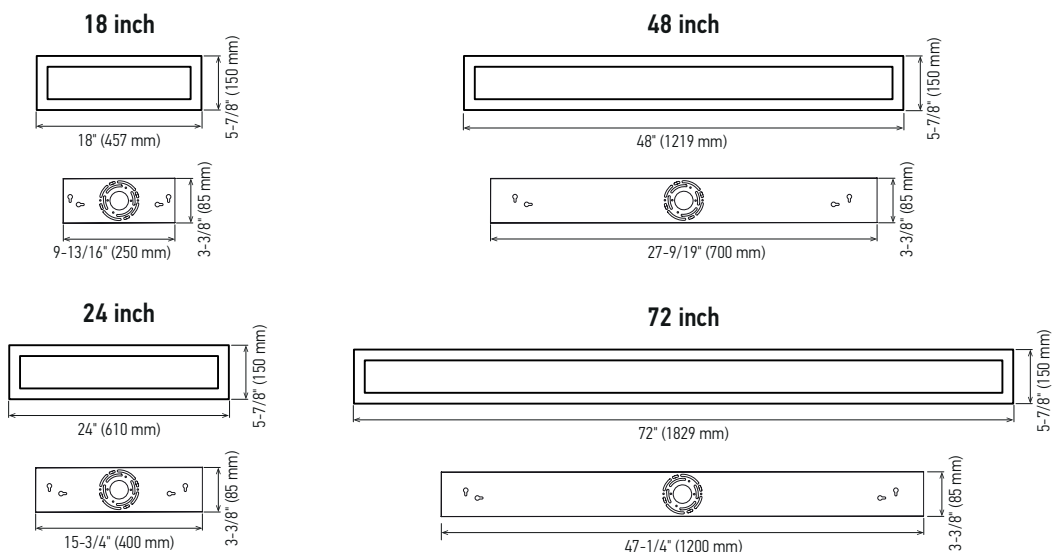
► **APPLICATION** - The fixture is rated for Wet Locations, making it perfect for indoor and outdoor projects such as decks, front doors, porches, patios, corridors, walkways, or any other common areas.

► **ADVANTAGES** - With a lifespan of 50,000 hours, these fixtures are made to last decades under normal operation! ASD provides a 5-year limited warranty along with ETL certification to guarantee top quality products and safety!



PRODUCT PRESENTATION:

Model	Size	Power	Voltage	Dimming	Lumens	CCT	Finish	Dimensions	Certification
ASD-LWS27A-18D12SM-RGBW-BK	18 inch	12 W	120-277V	SMART APP	590lm	Red-Green-Blue-2,700-6,500K	Black	18" x 5-7/8" x 1-15/16"	ETL (5032534)
ASD-LWS27A-24D18SM-RGBW-BK	24 inch	18 W	120-277V	SMART APP	1,048lm	Red-Green-Blue-2,700-6,500K	Black	24" x 5-7/8" x 1-13/16"	ETL (5032534)
ASD-LWS27A-48D36SM-RGBW-BK	48 inch	36 W	120-277V	SMART APP	1,883lm	Red-Green-Blue-2,700-6,500K	Black	48" x 5-7/8" x 1-13/16"	ETL (5032534)
ASD-LWS27A-72D40SM-RGBW-BK	72 inch	40 W	120-277V	SMART APP	2,305lm	Red-Green-Blue-2,700-6,500K	Black	72" x 5-7/8" x 2-1/16"	ETL (5032534)



For most up-to-date spec sheets please refer to asd-lighting.com



LED OUTDOOR WALL SCONCE WIDE ACRYLIC WITH RGBW

LWS27A-RGBW series

TECHNICAL PARAMETERS:

Model	Work environment	Operating temperature	Power factor	Beam Angle	Surge protection	Housing	Lens	CRI
ASD-LWS27A-18D12SM-RGBW-BK	Wet location	-40°F to 113°F (-40°C to 45°C)	>0.5	333°	2 kV	Steel	Acrylic	>80
ASD-LWS27A-24D18SM-RGBW-BK	Wet location	-40°F to 113°F (-40°C to 45°C)	>0.9	351°	1 kV	Steel	Acrylic	>80
ASD-LWS27A-48D36SM-RGBW-BK	Wet location	-40°F to 113°F (-40°C to 45°C)	>0.9	349°	1 kV	Steel	Acrylic	>80
ASD-LWS27A-72D40SM-RGBW-BK	Wet location	-40°F to 113°F (-40°C to 45°C)	>0.7	350°	1kV	Steel	Acrylic	>80

DIMMING COMPATIBLE CONTROLS:

Brand	Lutron	Leviton
Models	MACL-153MLH-WH	R02-DW6HD-2RW
	STCL-153PH-WH	R00-RNL06-0TW
	PD-6WCL-WH-R	R68-06674-POT
	DVCL-153PR	DSL06
	P-PKG1W	

PACKAGE CONTENTS:

Description	Quantity
LED Outdoor Wall Sconce Wide Acrylic	1
Mounting plate (A)	1
Mounting screw (B)	2
Self-tapping screw (C)	2
Fixture screw (D)	4 (6 for 72")
Wire nut (E)	3
Waterproof gasket (F)	4 (6 for 72")
Anchor (G)	2
Box	1



INSTALLATION GUIDE

IMPORTANT SAFETY INFORMATION:

Please read all the instructions below before installation!

- ▶ Make sure that the supply voltage corresponds to the rated product voltage.
- ▶ The product must be installed by a qualified electrician in accordance with the National Electrical Code and corresponding local codes.
- ▶ If the product is damaged, do not use it.

⚠ WARNING

Risk of personal injury – read and follow all warnings and installation instructions. Keep or give to the owner for future reference.

Risk of cuts: Wear gloves to prevent cuts or abrasions when removing from carton, handling, installing, and maintaining this product.

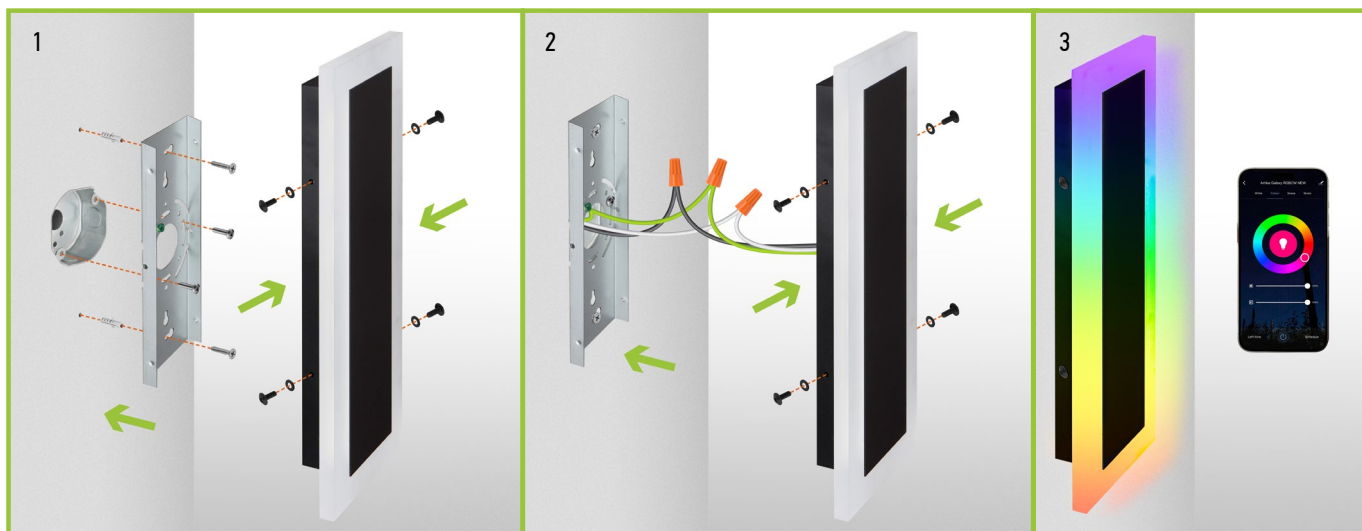
Risk of electric shock: This product must be installed in accordance with the applicable installation code by a person familiar with the construction and operation of the product and the hazards involved.

Risk of Fire: Minimum 194°F supply conductors. Consult a qualified electrician to ensure correct branch circuit conductor.

ASD® assumes no responsibility for claims arising out of improper or careless installation or handling of this product.

INSTALLATION STEPS:

1. Unscrew the four fixture screws from both sides and remove the mounting plate. The fixture can be installed on standard 2.75" or 3.5" outlet box. Attach the mounting plate to the outlet box and mark the location of the holes, drill two holes for anchors, insert anchors into the holes, twist the two self-tapping screws. Attach the mounting plate to the outlet box using two mounting screws and tighten self-tapping screws.
2. Connect the wires: Black to Black, White to White, Ground to Ground. Secure the connection with wire nuts. Put the waterproof gasket on each fixture screw. Place the wall sconce on the mounting plate and secure it using fixture screws.
3. The fixture has RGBW design with APP control. You can easily select Red, Green, Blue, White (2,700K - 6,500K) colors or its' combinations, having 16.7 million colors in total. All of it is easily controlled by Smart APP on your Smartphone.
For outdoor locations please use silicone (not included).

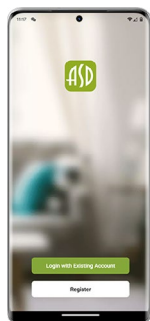
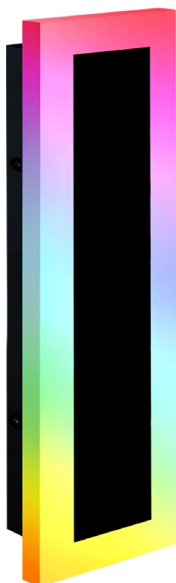


For most up-to-date spec sheets please refer to asd-lighting.com



LED OUTDOOR WALL SCONCE WIDE ACRYLIC WITH RGBW

LWS27A-RGBW series



ASD Smart is an innovative solution for seamless control of lighting fixtures from ASD Lighting. With the mobile app, users can easily adjust brightness, change color temperature, and utilize RGB lighting to create the perfect ambiance.

The App supports **group control**, allowing multiple lights to work in sync, as well as the creation of **personalized lighting scenarios**. For added convenience, it integrates with **voice assistants** like Amazon Alexa, enabling hands-free lighting control.

This smart solution enhances **convenience, innovation, and energy efficiency** wherever it is used.

ASD SMART APP
download Android



ASD SMART APP
download iOS



Smartphone manual



FIXTURE CONTROL

Set brightness, change color temperature, use RGB lighting.



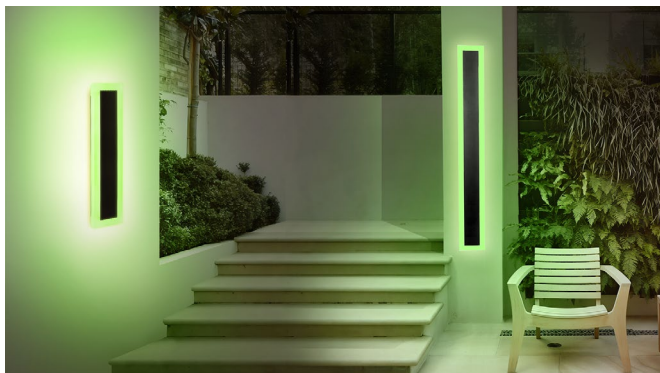
CUSTOM SCENARIOS

Allows you to apply scenes, scenarios or to create your own.



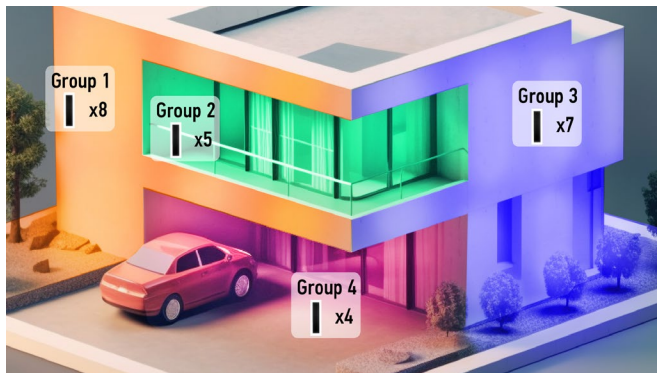
SCHEDULING

Set your lights to turn on and off exactly when you need them - by time of day and day of the week.



GROUP CONTROL

Control multiple lights as one - group devices together for seamless, synchronized lighting



For most up-to-date spec sheets please refer to asd-lighting.com



LED OUTDOOR WALL SCONCE WIDE ACRYLIC WITH RGBW

LWS27A-RGBW series

STEP-BY-STEP GUIDE FOR ADDING NEW DEVICES TO THE ASD SMART APP:

- Download the ASD SMART APP from the App Store (for IOS) or from the Google Play Store (for Android) using the QR codes below.
- Connect the fixture to a power source, then prepare the fixture for pairing:
 - If the fixture is blinking: It's already in pairing mode. Skip to Step 4.
 - If the fixture is not blinking: Go to Step 3 to manually enter pairing mode.
- Manually put the fixture in pairing mode:
 - Turn the fixture on and off 5 times. The interval between turning on and off should be at least one second.
 - The fixture will start blinking, signaling it's in pairing mode. The blinking might stop after a few seconds, but it will still be in pairing mode.
- Adding the fixture to the App:
 - Ensure Bluetooth is enabled and your phone is connected to a Wi-Fi network with internet access.
 - Open the ASD SMART APP.
 - At the top of the App, select the area where the new fixture will be located.
 - Tap the "+" button in the top right corner, then select "Add device".
 - Wait for the App to detect the fixture. Once it appears, tap "Add".
 - Enter your Wi-Fi credentials when prompted.
 - Once the fixture is successfully added, tap "Done" to complete the setup.

FAQ:

1. I can't see the device in the App:

Ensure the smart device is plugged in, Wi-Fi and Bluetooth are enabled on your mobile device, and your network hasn't reached its device limit.

If you're still having trouble:

- Keep the fixtures in pairing mode and reset your router.
- Verify that your Wi-Fi network is 2.4 GHz, as smart devices require this frequency.
- Ensure your smart device is within Wi-Fi range (approximately 5-10ft indoors).

2. "Time out" error when connecting the device:

- On the App homepage, tap the "Me" icon in the lower right corner.
- In the upper right corner of the next screen, tap the "Settings" icon.
- Scroll to the bottom of the settings page to check the current storage occupied by the App cache.
- Close the App, reboot your phone, and try re-adding the device.

3. I can't control multiple devices at once.

Ensure you are not attempting to group different types of devices (for example, a wall sconce and a security camera). Only devices of the same type can be grouped and controlled together.

To learn more about the App, check out the instructions at this link.

ORDERING INFORMATION

Model	Product dimensions	Weight	Pcs. per carton	Carton size	Carton weight	UPC	GTIN 14
ASD-LWS27A-18D12SM-RGBW-BK	18" x 5-7/8" x 1-15/16"	5.1 lbs (2.3 kg)	2	21.3" x 7.9" x 8.3"	14.4 lbs	81012811939	10810128119396
ASD-LWS27A-24D18SM-RGBW-BK	24" x 5-7/8" x 1-13/16"	6.8 lbs (3.1 kg)	2	27.2" x 7.9" x 8.3"	15.0 lbs	81012811463	10810128114636
ASD-LWS27A-48D36SM-RGBW-BK	48" x 5-7/8" x 1-13/16"	13.7 lbs (6.2 kg)	1	51" x 3.9" x 8.1"	15.6 lbs	81012811464	-
ASD-LWS27A-72D40SM-RGBW-BK	72" x 5-7/8" x 2-1/16"	22.6 lbs (10.3kg)	1	75.79" x 4.33" x 8.46"	25.1 lbs	81019020092	-

For most up-to-date spec sheets please refer to asd-lighting.com