



LED EMERGENCY LIGHTS

EML series

► **DESIGN** - LED EMERGENCY LIGHTS are made from ABS material with a flame-retardant UL-94V-0 rating, ensuring high durability and fire resistance. The housing is impact-resistant and designed to withstand harsh conditions such as fires or earthquakes.

► **LIGHTING** - Each unit features dual adjustable LED lamp heads that can rotate up, delivering focused and flexible illumination. Light color is 4000K, providing clear visibility along hallways or egress paths. Each emergency fixture includes two 1.2W LED lights for reliable backup lighting during power outages.

► **BATTERY BACK-UP** - Equipped with built-in 3.6V Ni-Cd rechargeable batteries, the lights offer a minimum of 90 minutes of emergency operation during power failures. The units support 120V–277V input voltage.

► **APPLICATION** - These fixtures are designed for easy surface wall or ceiling mounting and are compatible with standard junction boxes. Installation is quick, with all required hardware included. Widely used in stairwells, corridors, exits, schools, hospitals, offices, and commercial buildings, they provide reliable emergency illumination in any critical situation.

► **ADVANTAGES** - With a lifespan of 50,000 hours, these fixtures are made to last decades under normal operation! ASD provides a 5-year limited warranty along with UL certifications to guarantee top quality products and safety!



ASD-EML-2RL-W



ASD-EML-2RS-W



PRODUCT PRESENTATION:

Model	Power of product	Power of side lamps	Power of battery	Voltage	Lumens	CCT	Finish	Dimensions	Certification
ASD-EML-2RL-W	1.2 W	1.2 W PER HEAD	2.5 W	120-277V	215lm	4,000 K	White	9-13/16" x 4-1/8" x 2-11/16"	UL(E495654)
ASD-EML-2RS-W	1.2 W	1.2 W PER HEAD	2.5 W	120-277V	225lm	4,000 K	White	13-11/16" x 4-1/2" x 3-7/16"	UL(E495654)

TECHNICAL PARAMETERS:

Model	Work environment	Operating temperature	Power factor	Housing	CRI	Beam Angle
ASD-EML-2RL-W	Damp location	32°F to 104°F(0°C to 40°C)	>0,5	Plastic	>80	120°
ASD-EML-2RS-W	Damp location	32°F to 104°F(0°C to 40°C)	>0,5	Plastic	>80	120°

ORDERING INFORMATION

Model	Product dimensions	Weight	Pcs. Per carton	Carton size	Carton weight	UPC	GTIN 14
ASD-EML-2RL-W	9-13/16" x 4-1/8" x 2-11/16"	0.9 lbs(0.4kg)	6	10.8" x 9.8" x 9.8"	7.7 lbs	81019020106	10810190201067
ASD-EML-2RS-W	13-11/16" x 4-1/2" x 3-7/16"	1.2 lbs(0.6kg)	6	14.8" x 10.2" x 11.2"	9.8 lbs	81019020107	10810190201074

For most up-to-date spec sheets please refer to asd-lighting.com



LED EMERGENCY LIGHTS

EML series

⚠ WARNING

RISK OF PERSONAL INJURY – READ and follow all WARNINGS and installation instructions. Keep or give to the owner for future reference.

Risk of cuts: Wear gloves to prevent cuts or abrasions when removing from carton, handling, installing, and maintaining this product.

Risk of electric shock: This product must be installed in accordance with the applicable installation code by a person familiar with the construction and operation of the product and the hazards involved.

Risk of Fire: Minimum 194°F supply conductors. Consult a qualified electrician to ensure correct branch circuit conductor.

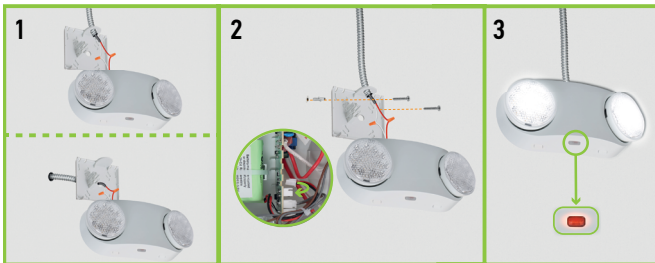
ASD® assumes no responsibility for claims arising out of improper or careless installation or handling of this product.

INSTALLATION WITH CONDUIT:

1. Use this fixture only with flexible conduit. Route the supply wires through the hole in the conduit flange or through the rear opening of the backplate, and make the conduit connection in accordance with applicable electrical code requirements. For 120V–277V applications, connect the red supply wire to the red fixture wire and the white supply wire to the white fixture wire. Make sure all connections are secure and properly insulated using wire nuts.

2. Use the backplate as a template to mark the mounting location on the wall. Drill two installation holes and insert wall anchors. Then, attach the backplate to the wall by inserting screws through the backplate and in to the anchors, ensuring a firm and level installation.

3. Connect the PCB board connector to the battery connector to enable backup power. Align the locking tabs and press the housing directly onto the backplate until it clicks in to place. Restore power to the fixture — the Test switch should illuminate, confirming proper power supply. Please note that the battery requires 24 hours to fully charge.



BATTERY REPLACEMENT :

This fixture uses a Ni-Cd Rechargeable AA700 mAh 3.6 V battery.

To remove the battery:

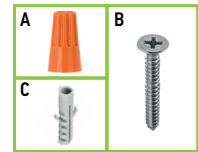
1. Bend the battery catches away from the battery and remove the battery from the housing.
2. Disconnect the battery leads from the board terminal.
3. Connect the new battery to the board terminal.
4. Place the new battery in the battery location and ensure it is seated behind the battery catches.

TROUBLESHOOTING

Problem	Possible cause	Solution
The LED charge indicator does not illuminate	AC power supply is off	Ensure the unit has AC power supply. Restore the power at the breaker/fuse box
	The unit is incorrectly wired	Ensure the unit is wired correctly.
	The battery isn't connected	Ensure the battery is connected.
The LED emergency heads do not illuminate	The battery is discharged	Verify the unit is properly wired and connected to an AC power source. Allow the unit to charge for 24 hours and then re-test.
	The battery isn't connected	Ensure the battery is connected.

PACKAGE CONTENTS:

Description	Quantity
LED Emergency Lights	1
Wire nut (A)	3
Self-taping screw (B)	2
Anchor (C)	2
Box	1

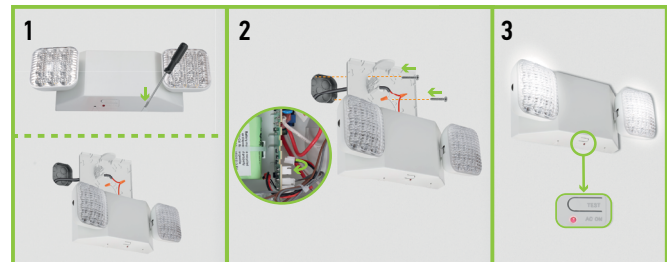


JUNCTION BOX INSTALLATION:

1. While holding the fixture, insert a flathead screwdriver into the top of the locking tabs and gently pry them away from the housing until they release. Carefully pull the backplate away from the housing. Feed the fixture wires through the backplate and connect them to the power supply using the provided wire nuts. For 120V–277V applications, connect the red supply wire to the red fixture wire, and the white supply wire to the white fixture wire. Cap any unused wires securely with a wire nut.

2. Attach the backplate to the junction box using standard junction box screws (not included). Ensure that all wires and connections are neatly positioned inside the junction box and backplate area. Then connect the PCB board connector to the battery connector.

3. Align the locking tabs on the housing with the corresponding slots on the backplate. Push the housing directly onto the backplate until it clicks and locks into place. Restore power to the fixture. The Test switch should illuminate, indicating proper installation and power connection. The battery requires 24 hours to fully charge after installation.



MAINTENANCE:

National Electric Code (NEC) and NFPA life safety code regulations require that routine tests need to be performed.

1. Allow the battery to charge at least 24 hours before testing.
2. To test the fixture, press the TEST button. The LED lamps should turn on.
3. Test the fixture regularly.

⚠ CAUTION

Always turn off AC power to the fixture before servicing. Service should be performed only by qualified personnel.

TESTING THE BATTERY:

Test the unit's battery once per month. Additionally, every 12 months, a full 90-minute test should be performed. While disconnected from the main power supply, the unit should illuminate for a minimum of 90 minutes on battery back up power.

For most up-to-date spec sheets please refer to asd-lighting.com

