

We have all seen them, fire extinguisher brackets that secure extinguishers in place – unfortunately each fire extinguisher bracket is only good for the size of extinguisher that they represent.

All you need is one!

We have taken a simple approach that allows the fire extinguisher to be mounted in any direction, onto any rough abusing type of equipment, and is capable of securing a fire extinguisher with our patented tension assembly.



Fits all Fire Extinguishers:

2.5lb, 5lb, 10lb, 20lb, 30lb

Even Cartridge Operated
Extinguishers:

5lb, 10lb, 20lb, 30lb

We have installed them on:

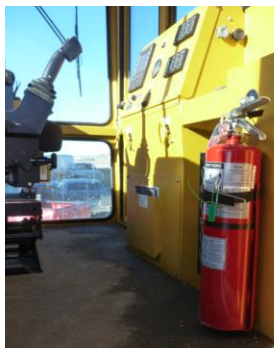
Excavators, Loaders, Garbage
Trucks, Gravel Trucks, Highway
Trucks, Pickups, Bobcats, Case,
JCB loaders, Wranglers,
Track-mobiles, Shuttle wagons,
Locomotives, Conveyors, Bucket
Elevators, etc.



Fingers Grip Base of Extinguisher



Locomotive



Shuttle Wagon



Bobcat



Patented Tension assembly, 300lbs applied tension

Is this the answer?



"We service 5,000 extinguishers annually, and we feel that extinguisher brackets shall have the following characteristics: simple design, ease of installation, easy to use, prolongs the life of the extinguisher & it is a huge bonus if we can have one bracket that fits all extinguishers – it minimizes the amount of stock that we carry"

"It is a cardinal sin to place a fire extinguisher and its bracket in mud, snow, even water – both the extinguisher and the bracket corrode quickly. We have seen extinguishers less than one year of age that have failed our inspection simply due to improper brackets."

"We are in the business of selling & servicing fire extinguishers. Our preference is to service each extinguisher annually rather than replace it." Alberta Onsite Fire & Safety Inspections Inc.



22 Cougarstone Bay SW Calgary AB CANADA T3H 4Z4

P (403) 815 9527 F (403) 262-3108

www.ARFireEquipment.com