

EXTERIOR
TECHNOLOGIES GROUP



EXTERIOR CLADDING SYSTEMS TARIFF FREE CATALOGUE

#1 Trusted Canadian Construction Material Supplier

**We bring top-notch results because only
the best will do.**

With 20+ years of experience, we excel in delivering
both residential and commercial construction projects
to our clients.



EXTERIOR
TECHNOLOGIES GROUP

Exterior Technologies Group offers high-performance exterior wall cladding solutions. As dedicated exterior cladding suppliers, we ensure durability, sustainability, and design flexibility for all your architectural needs.



EXTERIOR WALL PANELS

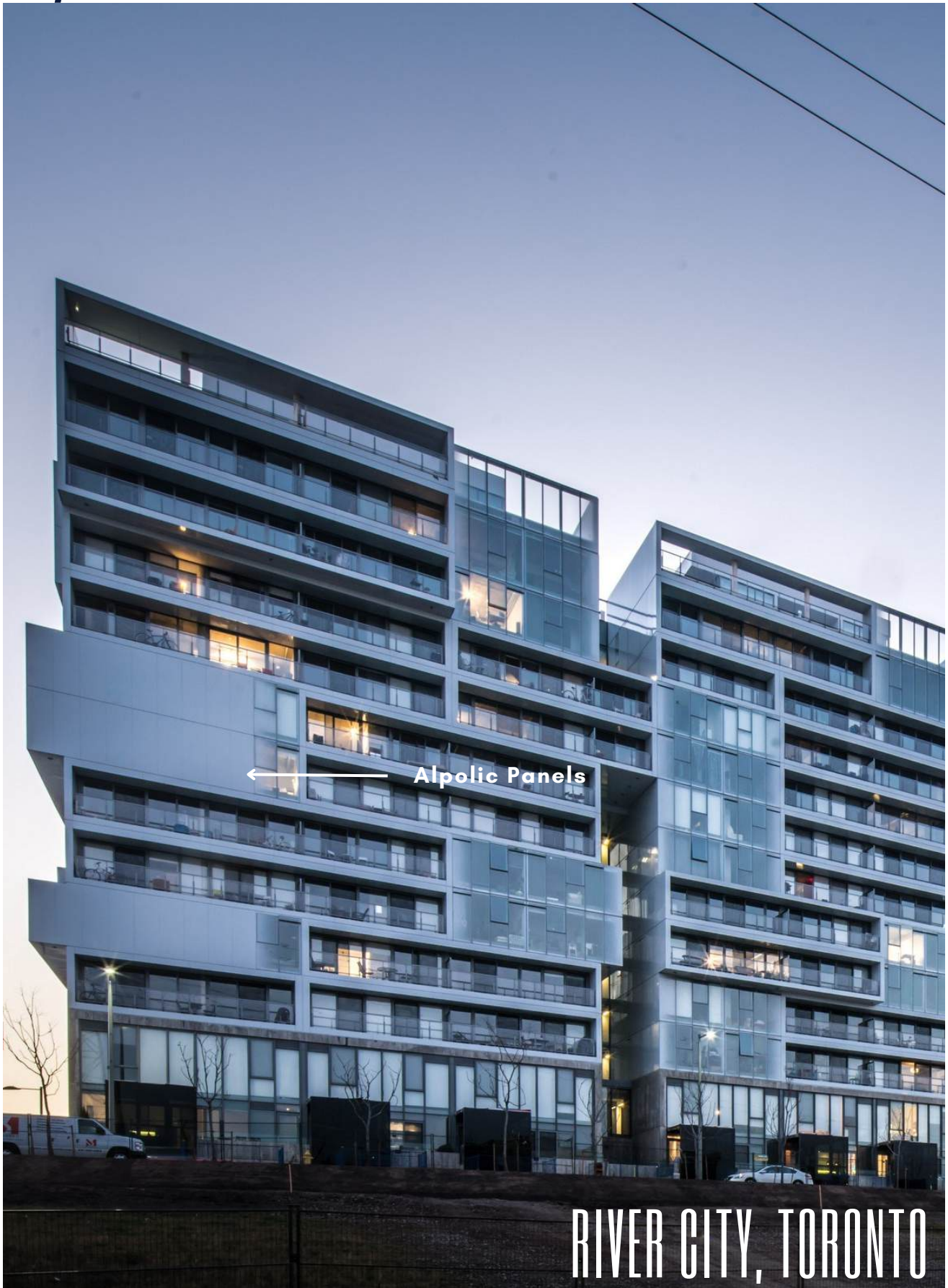
Alpolic ACM/MCM Metal Composite Material	4
elZinc Architectural Zinc	7
Favemanc Terra Cotta	14
ForMe Battens 50	16
ForMe Battens Light	18
ForMe Cladding	20
Kalzip FC Aluminum Panels	22
Kalzip Green Roof	25
Kalzip Solar	27
Kalzip Standing Seam	29
Parklex Prodema	32
TAC2.1 Thermal Spacers	37
UMC Aluminium Plate	40

Visit www.etgcc.com for more information.
For inquiries about our services, contact
+1 (844) 240 0452 or email info@etgcc.com.

Alpolic Panels



Alpolic Panels



ALPOLIC AGM PANELS

Materials & Finishes :	Aluminum (Painted & Anodized) , Zinc, Copper, Stainless Steel, Titanium also available <u>Click here to see selection of colour and finishes</u>
Combustibility :	Combustible. Can be used on non-combustible buildings. (CAN/ULC S134 compliant). Suitable for high rise construction.
Oil Canning :	None
Maximum Panel Size :	5.0' by 16.0' (also available 40' wide & 50' wide) Larger panels are possible with larger quantities & longer lead times. Please ask.
Warranty :	Finish : up to 35 Years (Please ask) Panel : 10 Years
Technical Spec :	<u>Architectural CAD details, click here to see the 3 parts Specs</u>

Budgets for Toronto Projects :

Ready-To-Install Panels : starting at \$25 per SQFT

Budgets based on 8,000 SQFT or more of Alpolic FR core panel with a 2-coat solid finish (i.e. black).
Budgets do NOT include : AVB, insulation, thermal clips, subgirts, and installation labour.

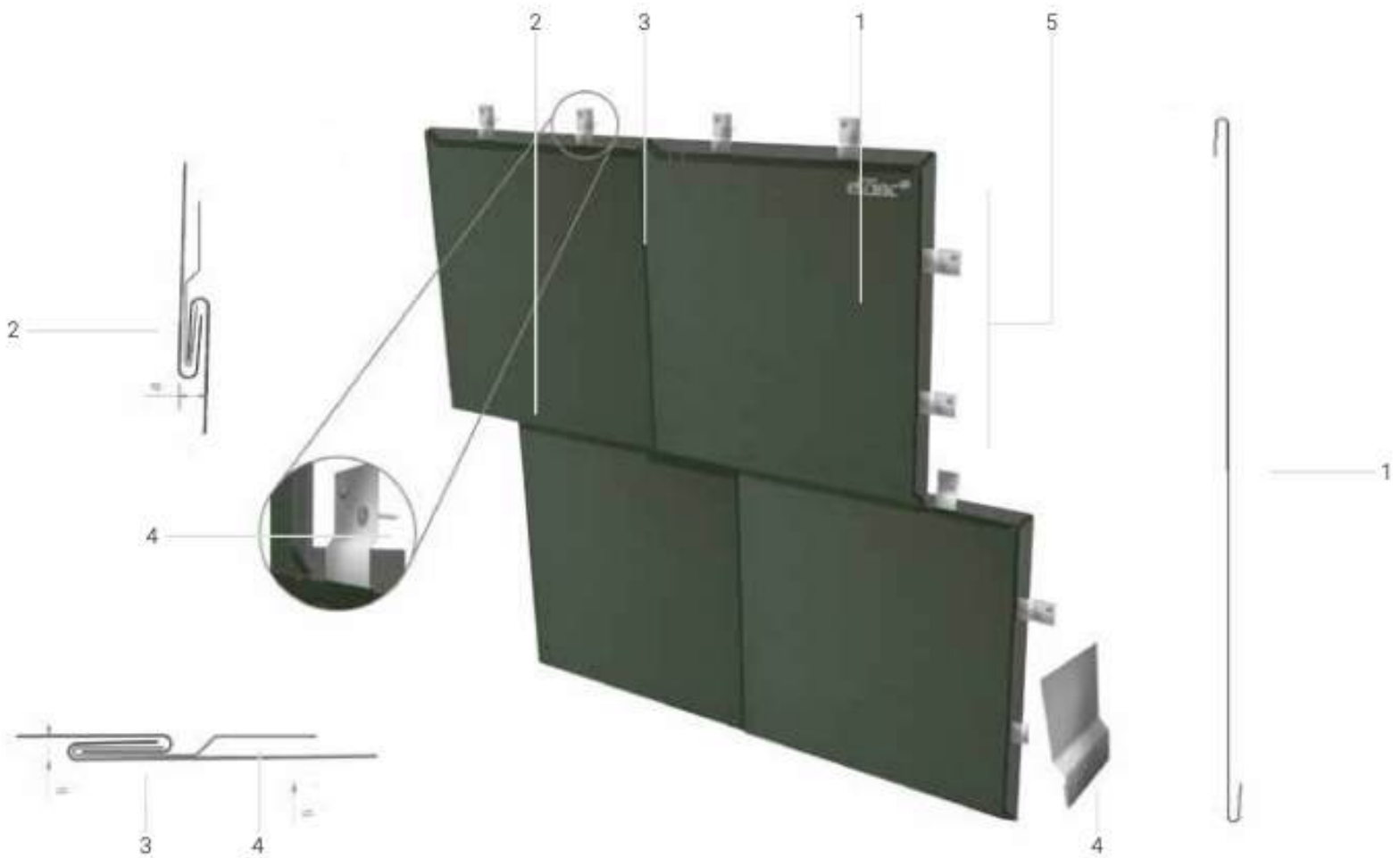
Please call (844) 240 0452 if we can help with budgets for more items and/or different finishes (i.e. anodized aluminum, zinc, copper, stainless steel, etc.).

elZinc Architectural Zinc



UNION STATION, TORONTO

Flat Lock eZinc



1. eZinc® flat lock shingle tray.

2. Flat lock dominant joint.

3. Flat lock transversal joint.

4. Stainless steel clip (can also be made of the same zinc as the cladding).

5. Seam centres dimension, normally 430 to 600mm.

Budgets for Toronto Projects :

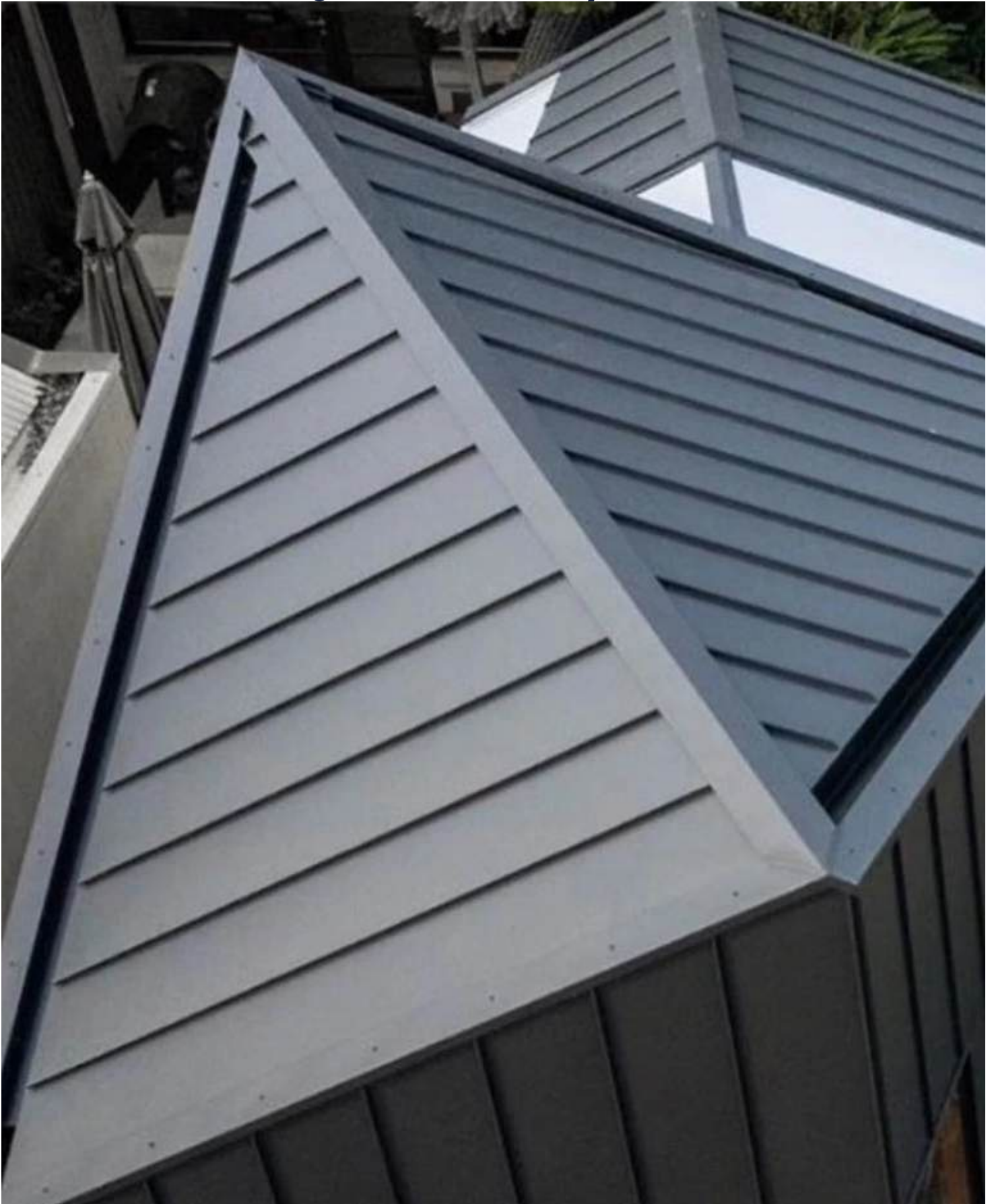
Ready-To-Install Panels : starting at \$13 per SQFT

Budgets based on 8,000 SQFT or more of 0.8mm eZinc Flat Lock in Alkimi finishes (i.e. slate grey, graphite black).

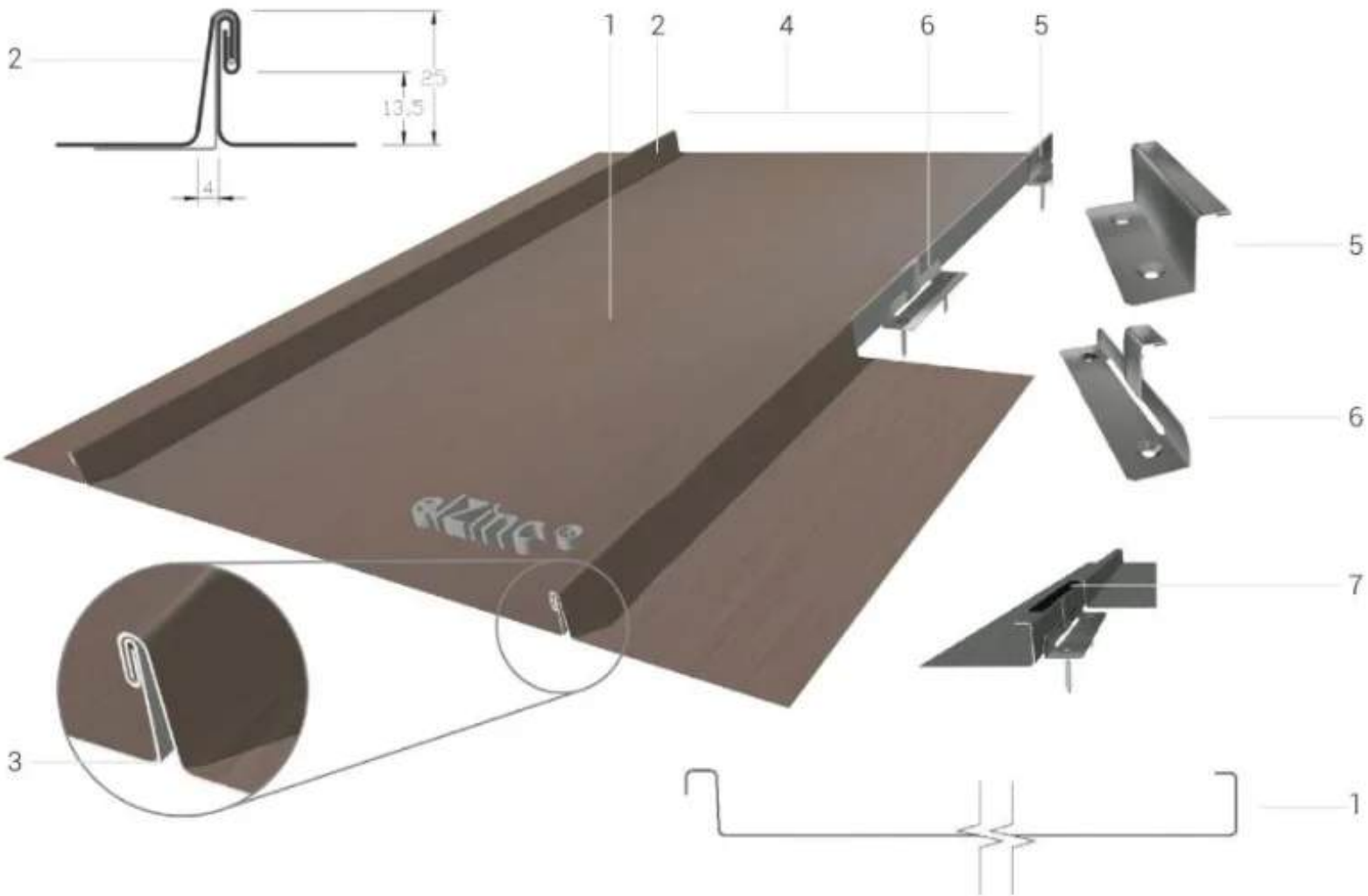
Budgets do NOT include : AVB, insulation, thermal clips, subgirts, and installation labour.

Please call (844) 240 0452 if we can help with budgets for more items and/or different finishes (i.e. gold or natural zinc).

elZinc Standing Seam roof systems



elZinc Standing Seam roof systems



Budgets for Toronto Projects :

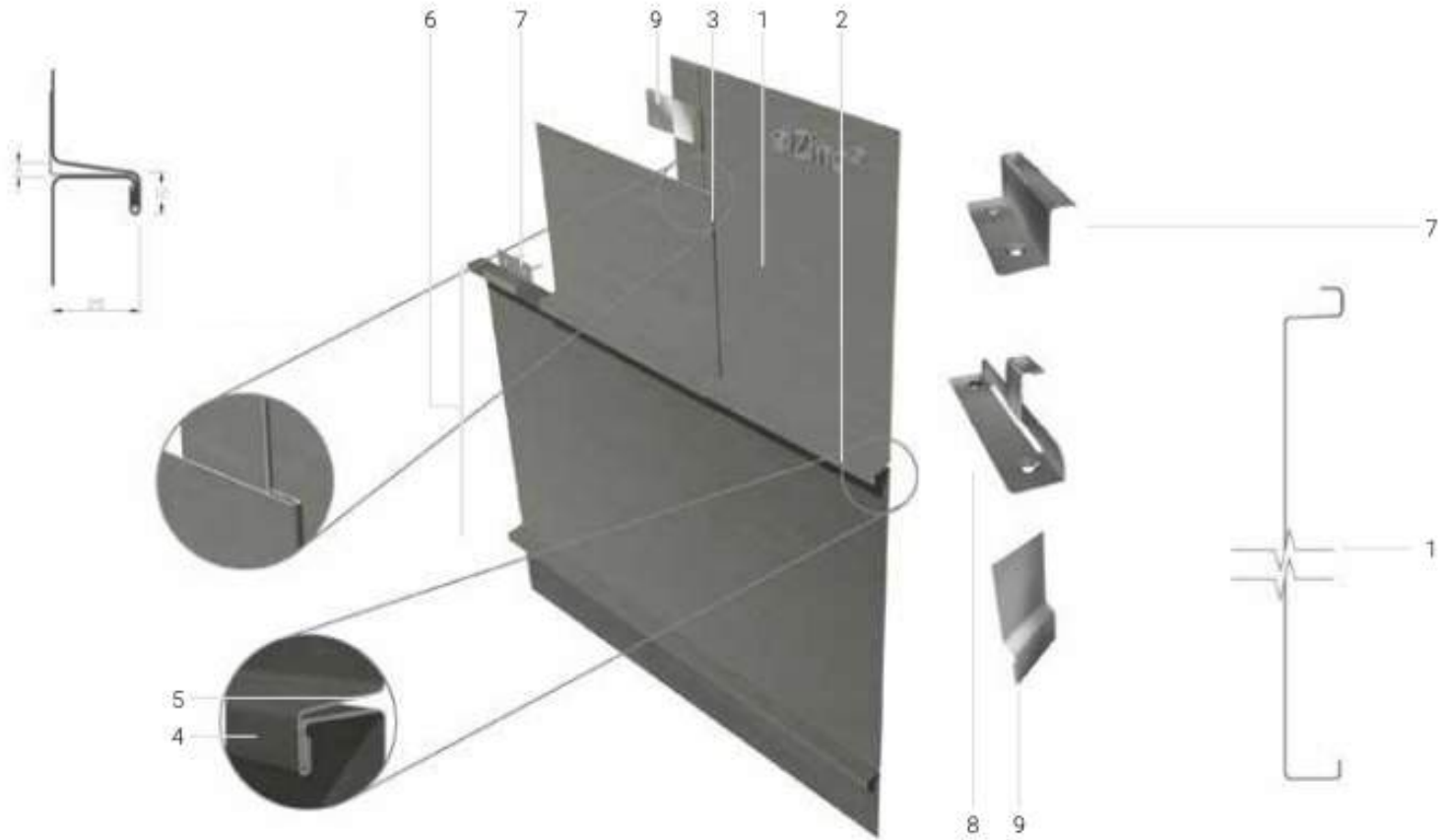
Ready-To-Install Panels : starting at \$13 per SQFT

Budgets based on 8,000 SQFT or more of 1mm elZinc Standing Seam roof system in Alkimi finishes (i.e. slate grey, graphite black).

Budgets do NOT include : AVB, insulation, thermal clips, subgirts, and installation labour.

Please call (844) 240 0452 if we can help with budgets for more items and/or different finishes (i.e. gold or natural zinc).

elZinc Standing Seam wall systems



1. elZinc® angle standing seam roofing tray.

2. Angle Standing seam joint (horizontal, vertical or set at an angle).

3. Flat lock transversal joint.

4. Welt of angle seam.

5. Expansion gap at seam base.

6. Seam centres dimension, normally from 430 to 600mm.

7. Stainless steel 'fixed' clip – anchors the tray in position.

8. Stainless steel 'sliding' clip

9. Stainless steel flat lock clip

Budgets for Toronto Projects :

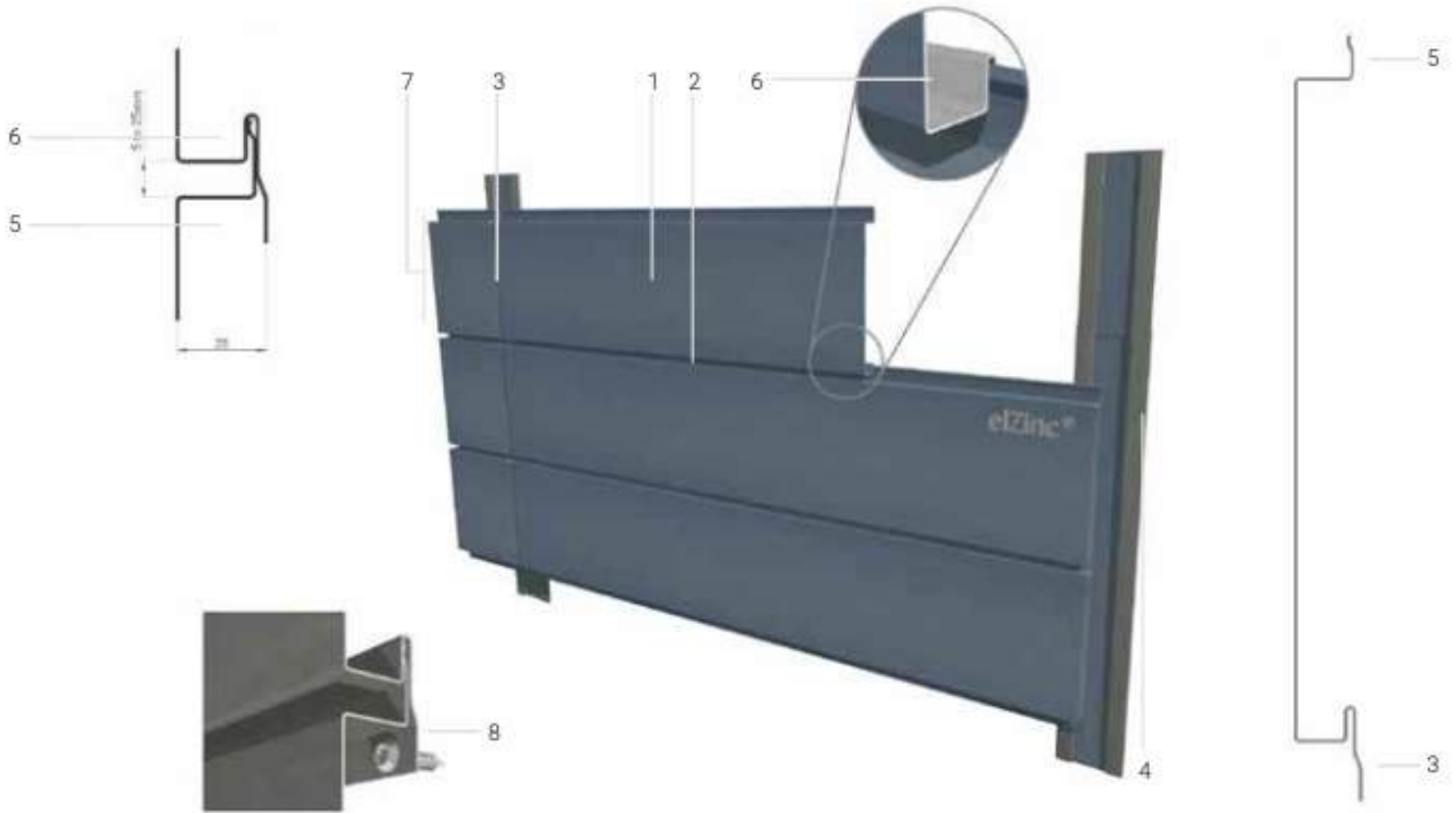
Ready-To-Install Panels : starting at \$13 per SQFT

Budgets based on 8,000 SQFT or more of 1mm elZinc Standing Seam wall system in Alkimi finishes (i.e. slate grey, graphite black).

Budgets do NOT include : AVB, insulation, thermal clips, subgirts, and installation labour.

Please call (844) 240 0452 if we can help with budgets for more items and/or different finishes (i.e. gold or natural zinc).

elZinc Panels



1. elZinc® profiled Façade panel. Maximum length nominally 4m.

2. Tongue and groove joint, can be varied from 5 to 25mm wide.

3. Transversal shadow joint.

4. Vertical weathering strip.

5. Tongue profile. Adjusts in length to vary joint width.

6. Groove profile

7. Joint centres dimension.

8. Direct fixing using self-drilling screws or rivets to rail profile sub structure (not shown).

Budgets for Toronto Projects :

Ready-To-Install Panels : starting at \$18 per SQFT

Budgets based on 8,000 SQFT or more of 1mm elZinc panels in Alkimi finishes (i.e. slate grey, graphite black).

Budgets do NOT include : AVB, insulation, thermal clips, subgirts, and installation labour.

Please call (844) 240 0452 if we can help with budgets for more items and/or different finishes (i.e. gold or natural zinc).

ELZINC ARCHITECTURAL ZINC

STANDING SEAM | FLAT LOCK PANELS | HIDDEN FASTENER

elZinc Architectural Zinc Cladding Systems - A durable and sustainable cladding material, combining zinc and titanium for enhanced strength and flexibility. Ideal for roofing and facades, elZinc develops a unique patina over time, offering long-lasting protection, modern aesthetics, and excellent environmental performance.

Materials :

Titanium Zinc, Slate, Graphite, Pre-weather (Stocked in Canada)

[Click here to view alkimi and rainbow colour selection](#)

Combustibility :

Non-combustible
(as tested to CAN/ULC S114)

Oil Canning :

Minimal effect

Popular Profiles :

Panel, standing seam, flat lock

Warranty :

Lifetime warranty on select finishes (please ask)

Technical Spec :

[Architectural CAD details, click here to see the 3 parts Specs](#)

Favemanc Terra Cotta



BILL & MELINDA GATES CENTER, SEATTLE

FAVEMANG TERRA GOTTA

Favemanc Ceramic Ventilated Façade – An innovative cladding system designed for energy efficiency, thermal insulation, and acoustic comfort. Featuring an open-air chamber that creates a "chimney effect," it enhances ventilation while improving building performance. A modern, durable, and sustainable solution for contemporary architecture.

Materials :

Terra Cotta Ceramic

[Click here to see selection of colour and finishes](#)

Combustibility :

Non-combustible
(as per CAN/ULC S114)

Popular Profiles :

200mm, 250mm, 300mm wide
400mm, 500mm, 600mm wide
Up to 1800mm long

Warranty :

10 Years

Budgets for Toronto Projects :

Ready-To-Install Panels & Rails : starting at \$14 per SQFT

Budgets do NOT include : AVB, insulation, thermal clips, subgirts, and installation labour.

Budgets based on 8,000 SQFT or more of 17mm Favemanc panels in our most popular finishes. See below :

Natural colours



Monochrome glazed colours



Glazed design colours



Please call (844) 240 0452 if we can help with budgets for more items and/or different finishes (i.e. wood grain, stone, brick).

ForMe Battens 50



← *ForMe Battens 50
(Rosewood)*

ITALY

FORME BATTENS 50

BATTENS 50 Cladding - 100% extruded aluminum, lightweight and sustainable. Provides sun shading, thermal comfort, and weather resistance. Versatile in design with various finishes, it enhances both interior and exterior spaces with durability, refined depth, and a modern aesthetic.

Materials :

Aluminum

[Click here to see selection of colour and finishes](#)

Combustibility :

Non-combustible
(as tested to CAN/ULC S114)

Oil Canning :

None

Profile :

50mm wide by 30mm deep
50mm wide by 100mm deep
50mm wide by 150mm deep
50mm wide by 200mm deep

Warranty :

15 Years (possible 20 years)

Finish :

AAMA 2604

Technical Spec :

[Architectural CAD details, click here to see the 3 parts Specs](#)

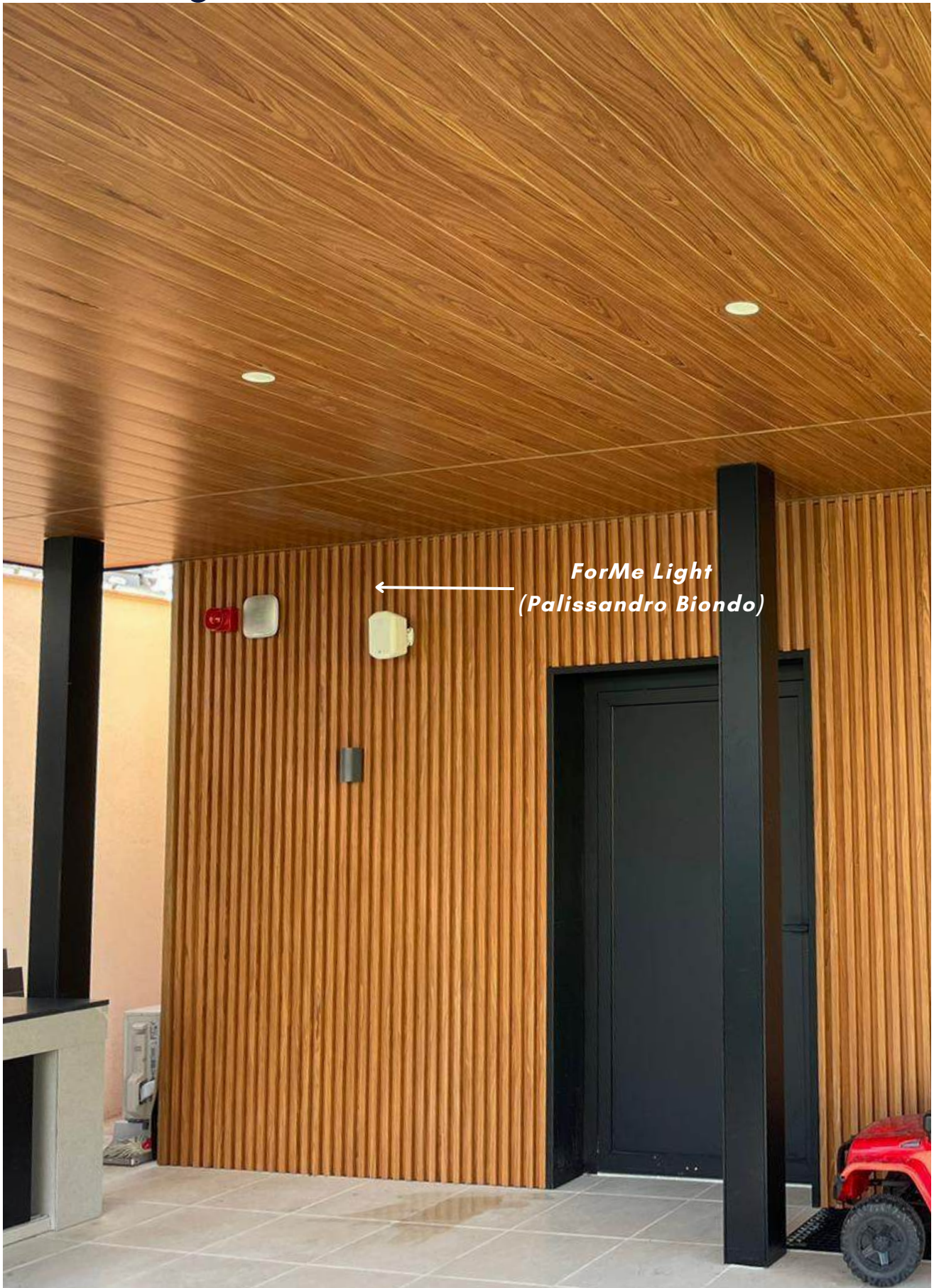
Budgets for Toronto Projects :

Ready-To-Install Battens : starting at \$14 per Lineal Foot

Budgets based on 8,000 Lineal Foot or more of of ForMe Battens 50 (2" by 4") in our most popular woodgrain finishes. Budgets do NOT include : AVB, insulation, thermal clips, subgirts, and installation labour.

Please call (844) 240 0452 if we can help with budgets for more items and/or different finishes (i.e. powder coat (solid & metallic), sublimated & digital print).

ForMe Light



*ForMe Light
(Palissandro Biondo)*

FORME BATTENS LIGHT

BATTENS LIGHT Battens - 100% extruded aluminum, modern, and versatile. With sleek geometric design and durable finishes, it adapts to flat or curved surfaces, enhancing interiors and exteriors with depth, character, and acoustic comfort.

Materials :	Aluminum <u>Click here to see selection of colour and finishes</u>
Combustibility :	Non-combustible (as tested to CAN/ULC S114)
Oil Canning:	None
Profile :	30mm wide by 25mm deep 30mm wide by 75mm deep 40mm wide by 25mm deep 40mm wide by 75mm deep
Warranty :	15 Years (possible 20 years)
Finish :	AAMA 2604
Technical Spec :	<u>Architectural CAD details, click here to see the 3 parts Specs</u>

Budgets for Toronto Projects :

Ready-To-Install Battens : starting at \$31 per SQFT

Budgets based on 8,000 SQFT or more of ForMe Battens Light in our most popular woodgrain finishes.

Budgets do NOT include : AVB, insulation, thermal clips, subgirts, and installation labour.

Please call (844) 240 0452 if we can help with budgets for more items and/or different finishes (i.e. powder coat (solid & metallic) & sublimated)

Forme Cladding



*Forme Cladding
(Wood Grain Aluminum)*



ITALY

FORME CLADDING

WOOD GRAIN ALUMINUM

CLADDING System - 100% extruded aluminum, durable, weather-resistant, and fire-safe. The ventilated façade protects from moisture, while modular planks offer flexible design options: Regular (grid), Ship's Deck (dynamic), and Boiserie (seamless). A stylish and sustainable choice for modern architecture.

Materials :

Aluminum

[Click here to see selection of colour and finishes](#)

Combustibility :

Non-combustible
(as tested to CAN/ULC S114)

Oil Canning :

None

Profile :

150mm by 6000mm (6" x 236")
250mm by 6000mm (10" x 236")

Warranty :

15 Years (possible 20 years)

Finish :

AAMA 2604

Technical Spec :

[Architectural CAD details, click here to see the 3 parts Specs](#)

Budgets for Toronto Projects :

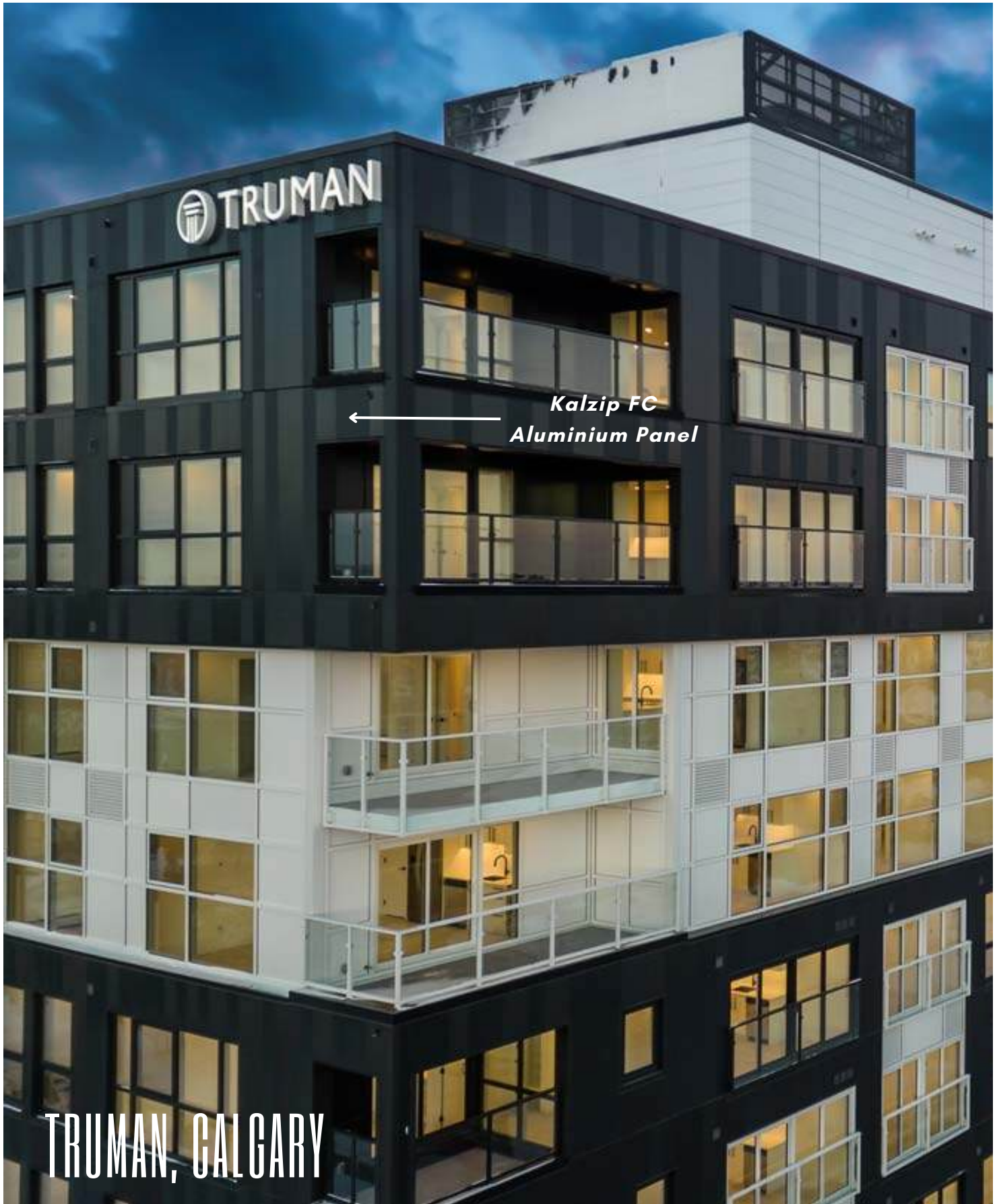
Ready-To-Install Cladding: starting at \$15 per SQFT

Budgets based on 8,000 SQFT or more of ForMe Cladding in our most popular woodgrain finishes.

Budgets do NOT include : AVB, insulation, thermal clips, subgirts, and installation labour.

Please call (844) 240 0452 if we can help with budgets for more items and/or different finishes (i.e. powder coat (solid & metallic) & sublimated)

Kalzip FC Aluminium Panel



Kalzip FC Aluminium Panel



KALZIP FC ALUMINUM PANELS

Kalzip Foldable Aluminium Standing Seam Roof – A versatile, durable material ideal for traditional roofing, offering freedom in design with easy processing using conventional tools. Highly corrosion-resistant, cost-effective, and simple to handle, it ensures long-term protection and reliable performance in any climate.

Materials :	Aluminum
Combustibility :	Non-combustible (as tested to CAN/ULC S114)
Oil Canning :	Minimal
Popular Profiles :	300mm, 400mm, 500mm, 600mm, 800mm wide Up to 5800mm long
Warranty :	20 Years for anodized or HPC finishes
Technical Spec :	<u>Architectural CAD details, click here to see the 3 parts Specs</u>

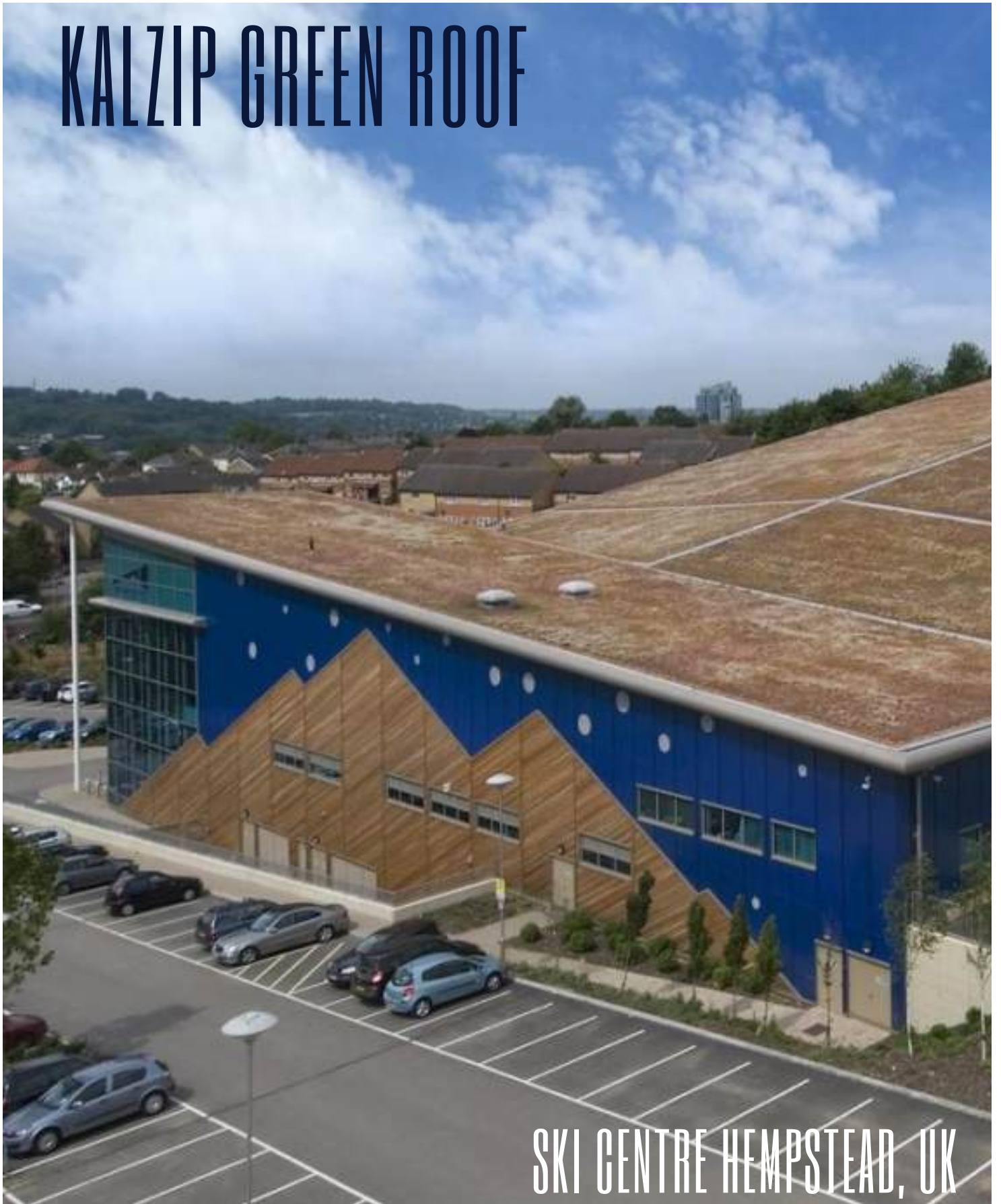
Budgets for Toronto Projects :

Ready-To-Install Panels & Rails : starting at \$13 per SQFT

Budgets based on 8,000 SQFT or more of Kalzip FC Aluminum Panels in our most popular finishes (i.e. Anodized Finishes).
Budgets do NOT include : AVB, insulation, thermal clips, subgirts, and installation labour.

Please call (844) 240 0452 if we can help with budgets for more items and/or different finishes (i.e. high performance polyester) .

KALZIP GREEN ROOF

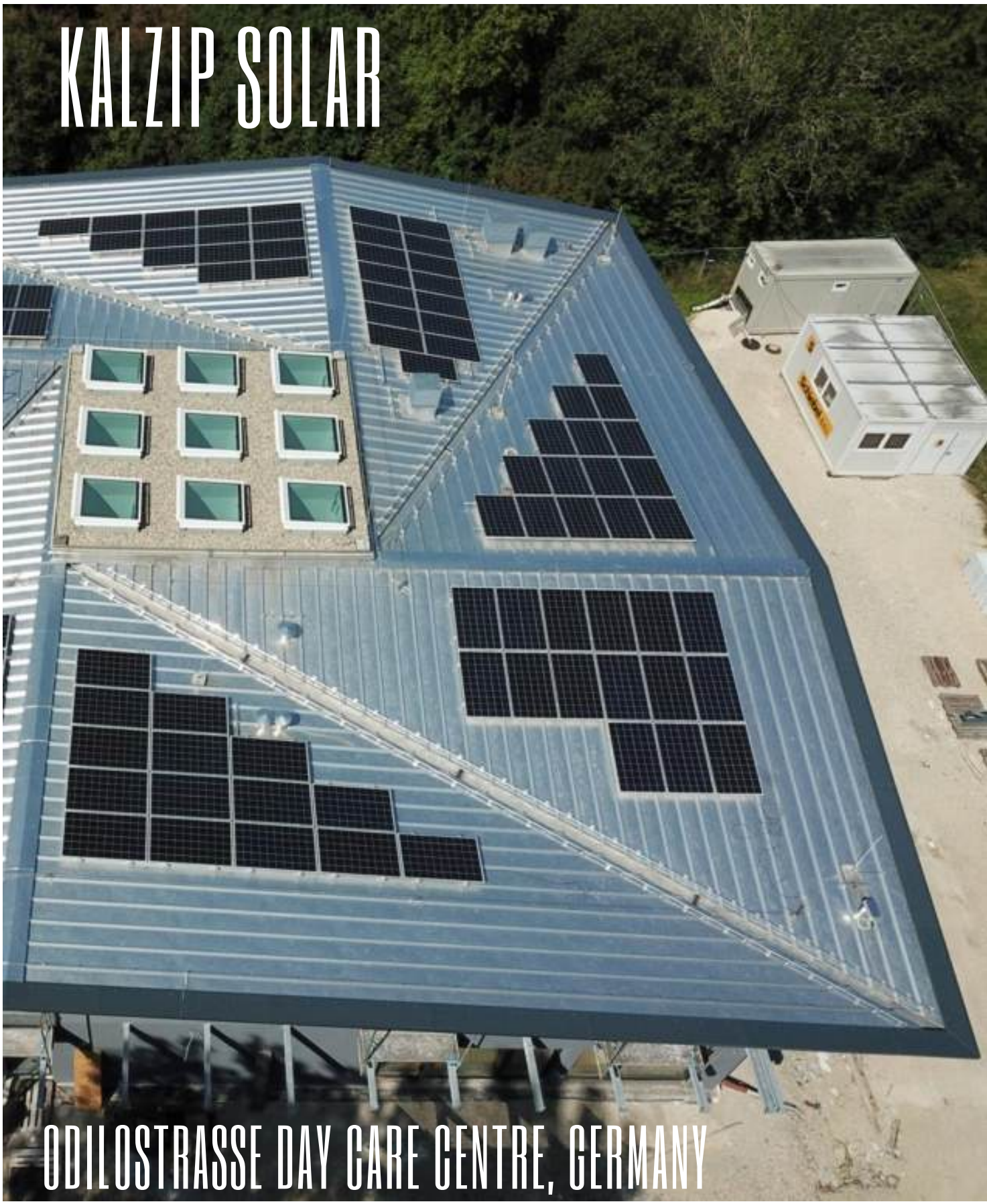


SKI CENTRE HEMPSTEAD, UK

Kalzip Green Roof

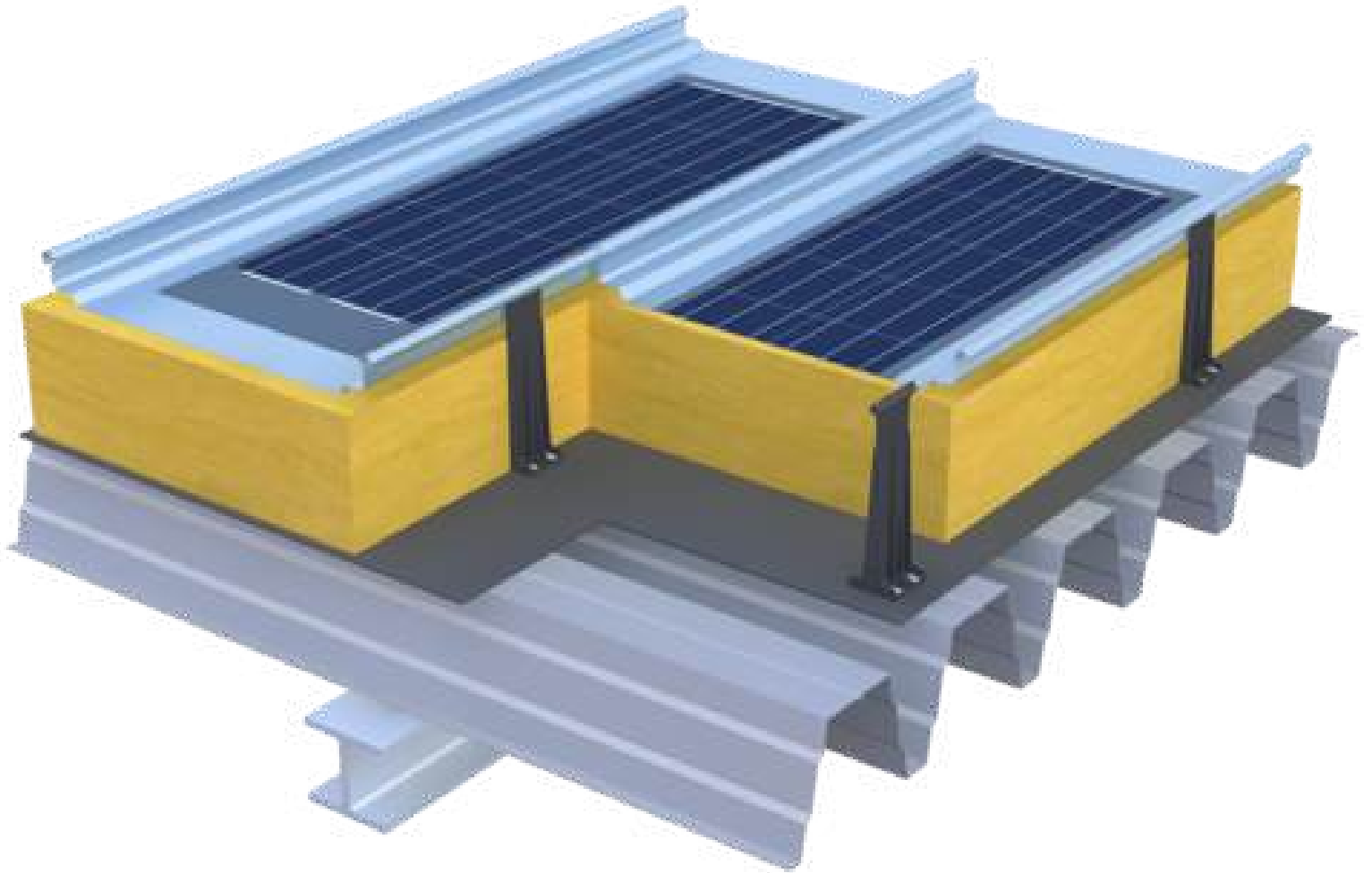


KALZIP SOLAR



ODILOSTRASSE DAY CARE CENTRE, GERMANY

Kalzip Solar



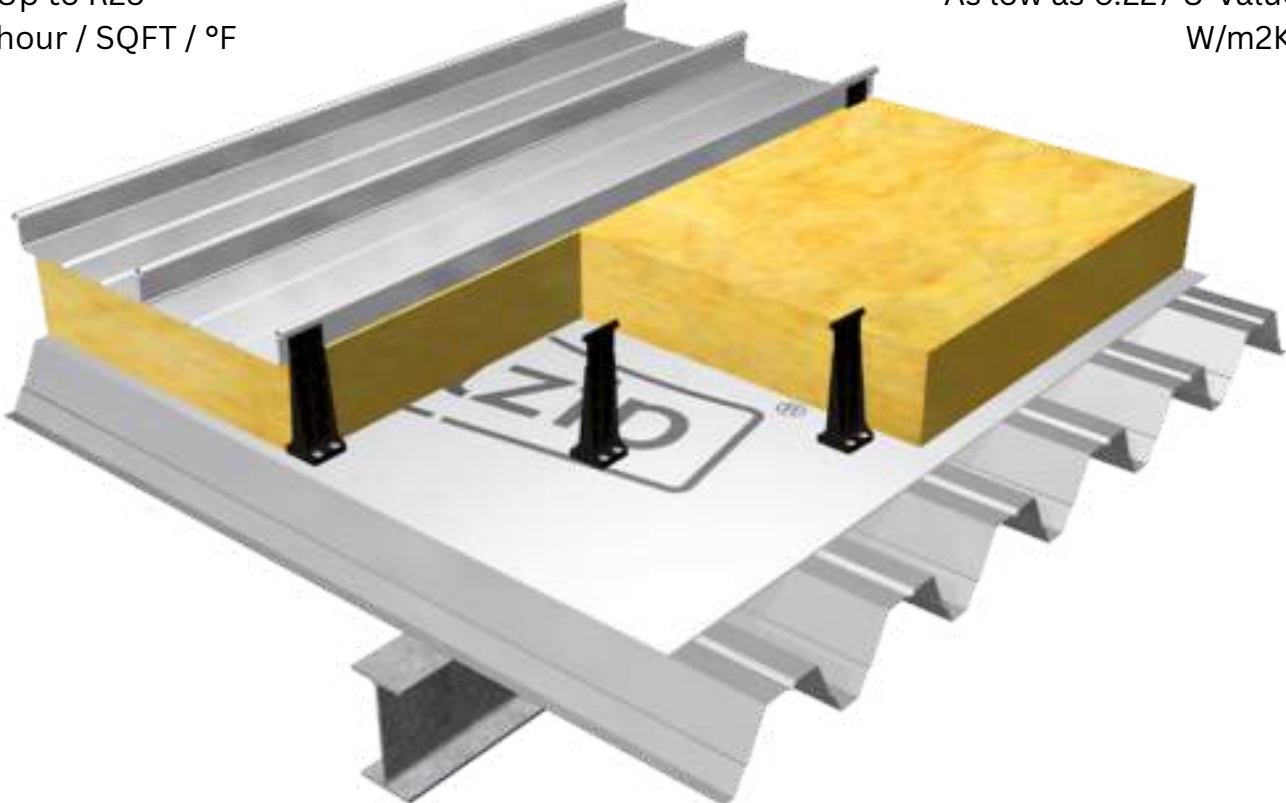
Kalzip Standing Seam



Kalzip Standing Seam

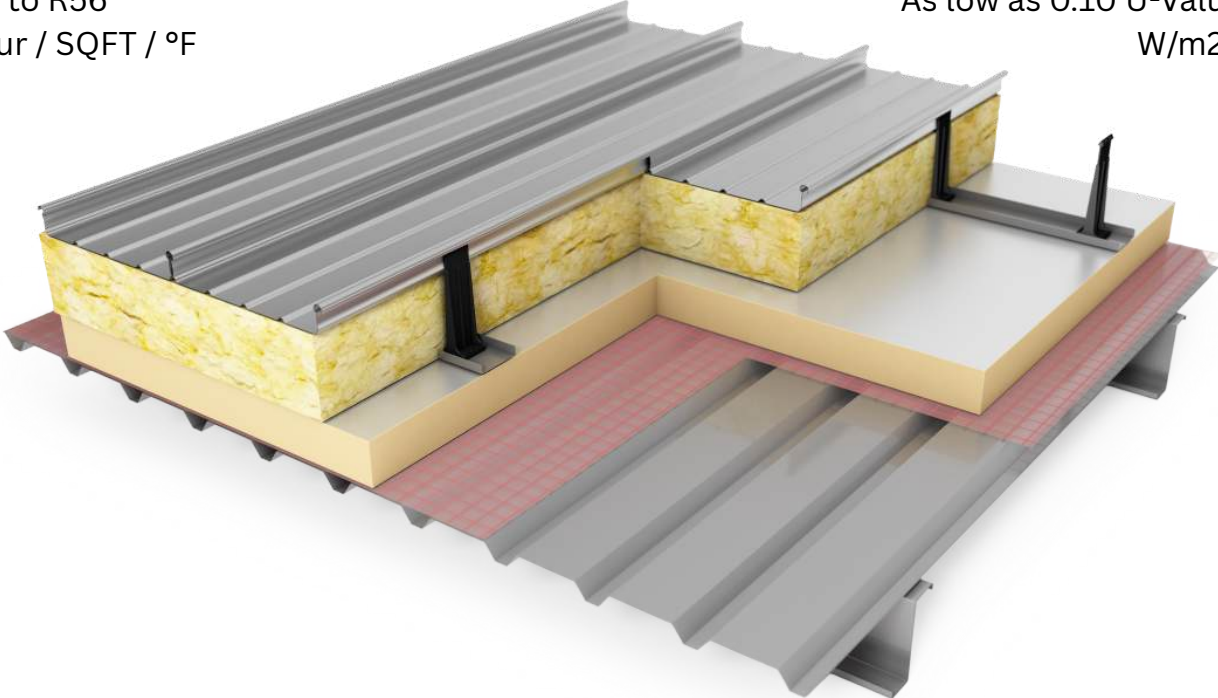
Up to R25
hour / SQFT / °F

As low as 0.227 U-Value
W/m2K



Up to R56
hour / SQFT / °F

As low as 0.10 U-Value
W/m2K



KALZIP STANDING SEAM

Kalzip Foldable Aluminium Standing Seam Roof – A versatile, durable material ideal for traditional roofing, offering freedom in design with easy processing using conventional tools. Highly corrosion-resistant, cost-effective, and simple to handle, it ensures long-term protection and reliable performance in any climate.

Materials : Aluminum – available finishes Natural, Anodized and pre painted.

[Click here for colour selection](#)

Combustibility : Non-combustible
(as tested to CAN/ULC S114)

Oil Canning : Minimal

Popular Profile : 305mm, 400mm, 500mm wide
Up to 100 metres long

Warranty : 20 Years for anodized or HPC finishes

Technical Spec : [Architectural CAD details, click here to see the 3 parts Specs](#)

Budgets for Toronto Projects :

Ready-To-Install Standing seam panels & Kalzip E - clips : starting at \$15 per SQFT

Budgets based on 8,000 SQFT or more of Kalzip Standing Seam in our most popular finishes (i.e. Anodized Finishes & High Performance Polyester).

Budgets do NOT include : AVB, insulation, thermal clips, subgirts, and installation labour.

Please call (844) 240 0452 if we can help with budgets for more items and/or different finishes.

Parklex Prodema Cladding



*Parklex Prodema
Rustik Finish Cladding*

LAZARIDIS SCHOOL OF BUSINESS & ECONOMICS

LAZARIDIS HALL, WILFRID LAURIER UNIVERSITY, WATERLOO

Parklex Prodema Panels



← ***Parklex Prodema
Walnut Panels***

Parklex Prodema Soffit



***Parklex Prodema
Grey Eucalyptus Soffit***

Parklex Prodema Siding



*Parklex Prodema
W. Pale & Hazel Siding* →

PARKLEX PRODEMA

COMPOSITE WOOD

Parklex Prodema offers high-performance natural wood panels designed for exterior and interior applications. Combining the beauty of real wood with exceptional durability, these panels are resistant to UV, moisture, and impact—making them ideal for ventilated façades, ceilings, and wall cladding. Sustainable and low-maintenance, Parklex Prodema delivers timeless aesthetics with modern performance.

Materials :

Real wood veneers on phenolic

[Click here for colour selection](#)

Combustibility :

Combustible. Can be used on non-combustible buildings (CAN/ULC S134 compliant).

Maximum Panel Size :

48" X 96"

Popular Thicknesses :

8mm, 10mm & 12mm

Warranty :

10 Years

Technical Spec :

[Architectural CAD details, click here to see the 3 parts Specs](#)

Budgets for Toronto Projects :

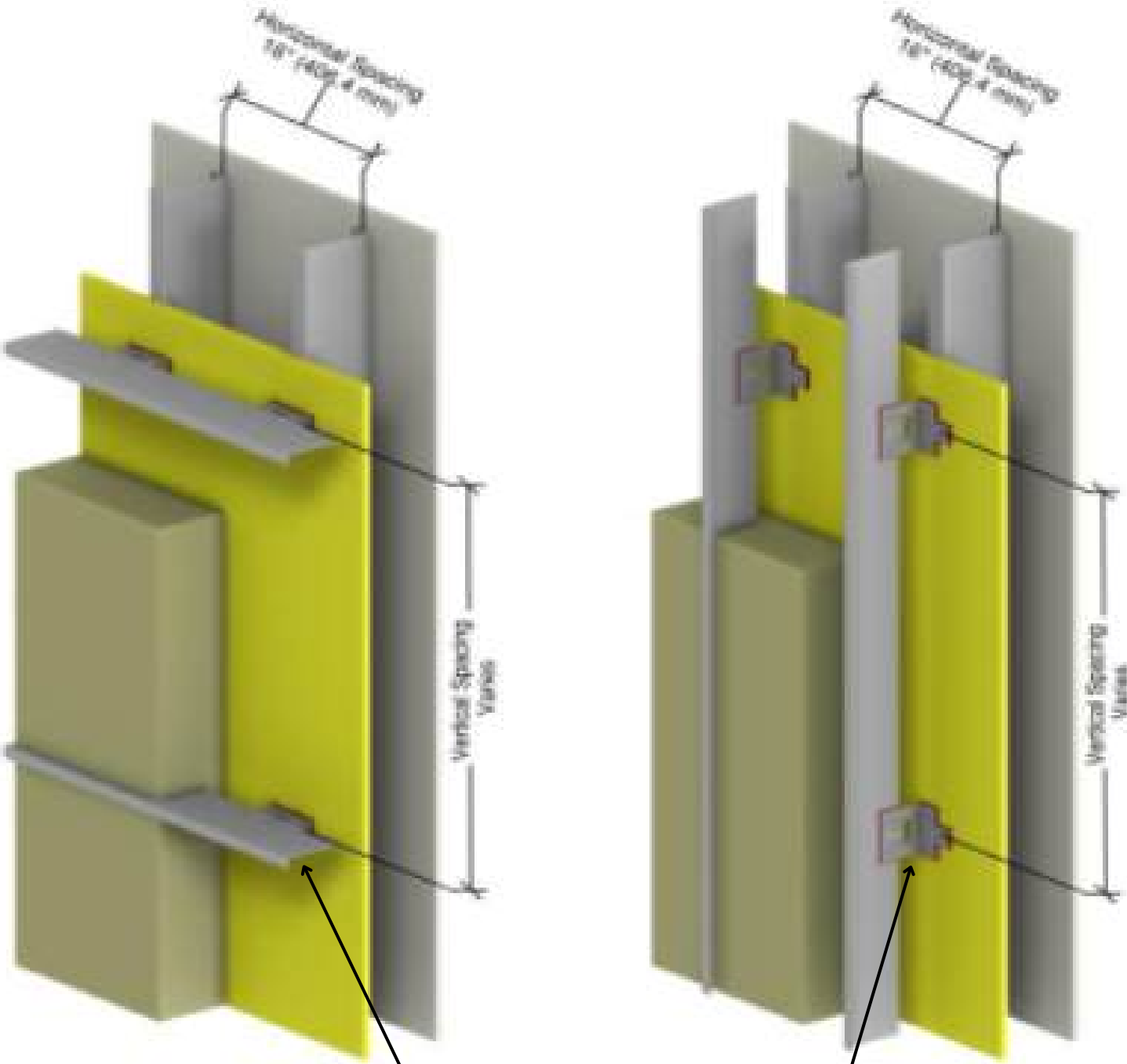
Ready-To-Install : starting at \$32 per SQFT

Budgets based on 8,000 SQFT or more of Parklex Prodema Panels in our most popular finishes.

Budgets do NOT include : AVB, insulation, thermal clips, subgirts, and installation labour.

Please call (844) 240 0452 if we can help with budgets for more items and/or different finishes.

TAC2.1 Thermal Spacers

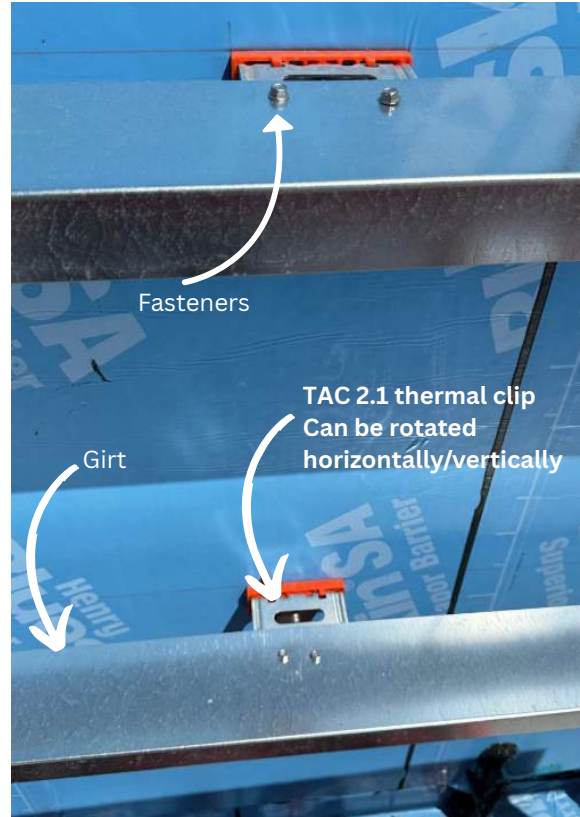


TAC2.1 Thermal Spacers

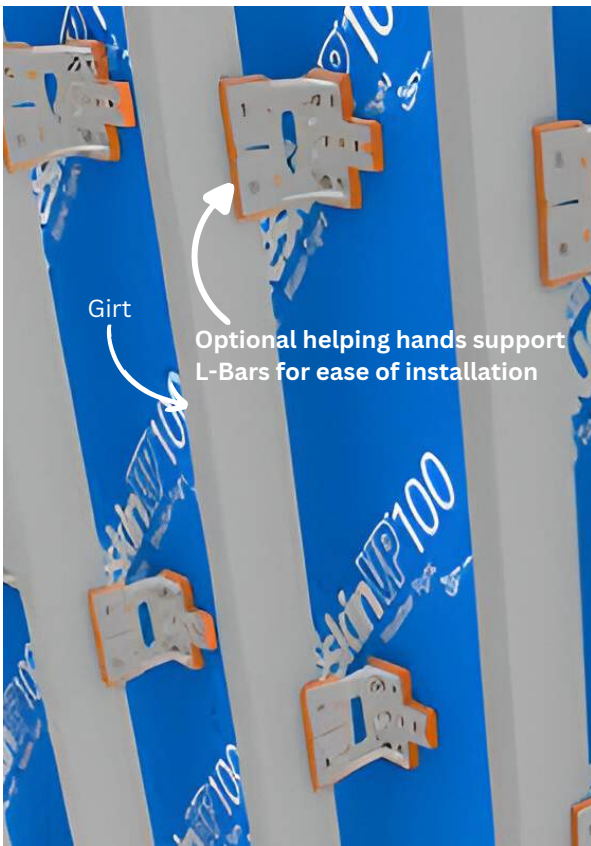
TAC2.1 Thermal Spacers



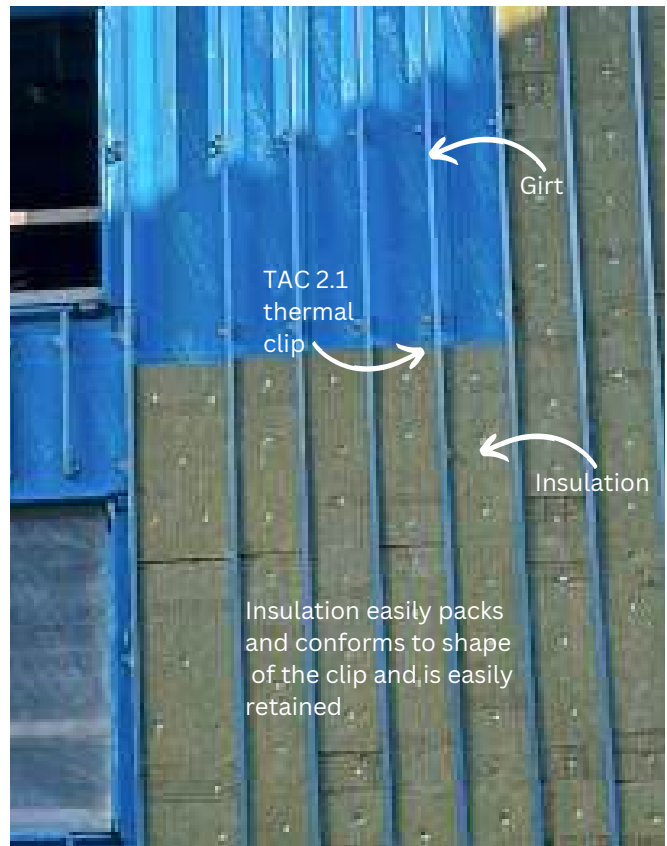
Horizontal Girt Application
Accommodates 2 or 4 fasteners



Horizontal Girt Application
Universal Cladding & Insulation solution



Vertical Girt Application
Helping - hand retainer



Vertical Girt Application
Continuous Installation achieved

TAC2.1 THERMAL SPACERS

TAC 2.1 Thermal Assembly Clip – A lightweight, galvanized steel clip with slotted HDPE thermal pads, supporting 4" to 6" system depths and delivering an R-Value of 23.1. Designed for high-wind loads, it allows easy installation with built-in adjustability and minimal components.

Materials :	Galvanized steel + HDPE thermal pad
Combustibility :	CAN/ULC S134-13 Compliant
Oil Canning :	N/A
Popular Profiles :	4.0" to 6.0" insulation depth (102mm to 152mm)
R-Value :	Up to R23.1 (based on R25.2 insulation) 91.6% efficient
Performance :	TAC2.1 installs FASTER than most thermal clips
Technical Spec :	<u>Architectural CAD details, click here to see the 3 parts Specs</u>

Budgets for Toronto Projects :

Ready-To-Install : starting at \$5.50 per Piece

Budgets based on 100 Pieces or more of TAC2.1 Thermal Spacers.

Budgets do NOT include : AVB, insulation, subgirts, and installation labour.

Please call (844) 240 0452 if we can help with budgets for more items and/or different finishes.

UMC Pre-Painted Aluminium Plate



*UMC Pre-Painted
Aluminium Plate*

PONDOK INDAH HOSPITAL, INDONESIA



ALUMINIUM PLATE

UMC Pre-Painted Aluminum Sheets – High-performance aluminum sheets with superior corrosion resistance, durability, and weather protection. Manufactured using advanced coil coating technology, they ensure long-lasting color retention and aesthetic appeal. Ideal for roofing, facades, ceilings, and ACP panels, they provide a reliable and versatile cladding solution.

Materials :	Pre-Painted Aluminum
Combustibility :	Non-combustible (as tested to CAN/ULC S114)
Thickness :	3mm
Coil Width :	1500mm wide
Length Max/Min available :	3000mm (typical length) longer lengths available
Warranty :	20 Years
Finish :	AAMA 2605

Budgets for Toronto Projects :

Ready-To-Install Aluminium Plate : starting at \$25 per SQFT

Budgets based on 8,000 SQFT or more of UMC Aluminium Plate in our most popular finishes.

Budgets do NOT include : AVB, insulation, thermal clips, subgirts, and installation labour.

Please call (844) 240 0452 if we can help with budgets for more items and/or different finishes.



EXTERIOR
TECHNOLOGIES GROUP

ETG, Exterior Technologies Group
109 Dupont Street, Toronto, ON M5R 1V4
Visit www.etgcc.com for more information.
+1 (844) 240 0452
info@etgcc.com.