

Economical All Hazard Siren System

Whelen's HORNET Series All Hazard Sirens provide an economical alternative for replacing outdated electro-mechanical sirens.

SYSTEM FEATURES

- **HORNET** - Speaker assembly
- Two-Compartment (Type I) natural finish aluminum cabinet
- Speaker includes one high efficiency 400 watt speaker driver
- 50' (15.24m) Cable
- Battery powered. Minimum of 15 minutes of full power output with batteries of our recommendation
- AC temperature compensated 5 amp battery charger
- Local controls or remote controls
- One power amplifier
- Rotor
- Electronic siren controller
- Tone generator timer
- Local control push-buttons
- **SI TEST®**
- Low Battery alarm
- Battery tray
- Lightning arrestor
- Six standard public warning tones: Wail, Whoop, Attack, Hi-Lo, Alert, Airhorn

SYSTEM OPTIONS

- **Solar Option** – 2 each, 80 watt panels, with brackets and solar regulator
- **Batteries** – 2 each, Whelen approved batteries. Check Whelen's web site, www.whelen.com for other recommended batteries
- **Pole Top Bracket**

SIREN ACTIVATION CONTROLS

Our VHF High and UHF siren activation control packages include the following:

- Radio
- Radio interface
- Tone or digital squelch
- 3-5dB gain omni-directional antenna with bracket
- 35' (10.67m) of RG58 antenna cable
- Polyphaser
- SI TEST
- Low battery alarm (two-way only)

Other features are dependant upon one or two-way controls. Whelen equipment can be interfaced with many different types of two-way radio communications products and systems. The following is offered as standard options. Contact the factory for special applications.



HORNET
mounted on
Rotor



TYPE I Electronic Cabinet
with optional Batteries (BSETHOR)

The following are available as standard options. **BOLD BLUE** indicates the Whelen Model:

ONE-WAY CONTROLS

- **HAUXIN** - Auxiliary board for contact closure activation
- **HD2030LL** - 10 digit DTMF landline activation
- **HD230NV** - 10 digit DTMF VHF high band narrow band / 138-174 Mhz
- **HD230NU** - 10 digit DTMF UHF narrow band / 450-470 Mhz
- **HORTT** - Two-tone sequential option

TWO WAY CONTROLS

- **HAUXCS** - Two-way contact closure activation and status board
- **HC2030LL** - Two-way landline activation
- **HC230NV** - 10 digit DTMF VHF high band narrow band / 138-174 Mhz
- **HC230NU** - 10 digit DTMF UHF narrow band / 450-470 Mhz

OPTIONS

- **HSTATUS** - Cabinet window LED status indicator
- **HPGINT** - Paging interface to interface Whelen tones with existing paging systems
- **HINTRU** - Intrusion alarm (available with two-way only)

Specifications

Component	Height Inches (CM)	Width Inches (CM)	Depth Inches (CM)	Weight Lbs. (kg)
HORNET Speaker & Rotor	41.0 (104.2)	30.5 (77.5)	23.0 (58.4)	100 (45.4)
Electronics Cabinet Type I	32.5 (82.6)	22.5 (57.2)	10.5 (26.7)	67 (30.5)*
Pole Top Bracket (Optional)	See Drawing			71 (32.3)

* Less batteries. Two batteries, add 90 Lbs. (40.9kg)

Electrical

- **Battery Charger Input:** 120VAC, 60Hz, 7A Fuse
- **Battery Charger Output:** 28VDC, 5A (nominal)
- **Batteries:** 2-12V, 60AH Lead Calcium (user supplied)
- **Standby Current:** 82mA,
- **Operating Current:** 22A, 24VDC
- **Power Amplifier Output Power:** 400 watts

Environmental

- **Operating temperature:** -35°C to +60°C
- **Storage temperature:** -65°C to +125°C
- **Humidity, non condensing:** 0 to 95%

Ordering Information

BASIC SYSTEM INCLUDES ALL OF THE FOLLOWING

- **HORNET** - Speaker assembly & electronics cabinet

OPTIONS

- **HAUXIN** (one-way) / **HAUXCS** (two-way) - Auxiliary boards for contact closure activation
- **HD2030LL / HD230NV / HD230NU** - One-way radio controls
- **HC2030LL, HC230NV/ HC230NU** - Two-way radio controls
- **HORTT** - Two-tone sequential
- **HSTATUS** - Cabinet window LED status indicator
- **HPGINT** - Paging interface to interface Whelen tones with existing paging systems
- **HINTRU** - Intrusion alarm
- **HSBC80** - Solar power ①
- **HPTB** - Speaker pole top bracket
- **BSETHOR** - One pair of batteries

NOTES

- ① Solar power option includes 2 - 80 watt panels, mounting bracket and regulator

Hornet Acoustic Performance

Wattage: 400 watts

Estimated 70dB Range: 2400 ft / 730 m

MASS NOTIFICATION PRODUCTS

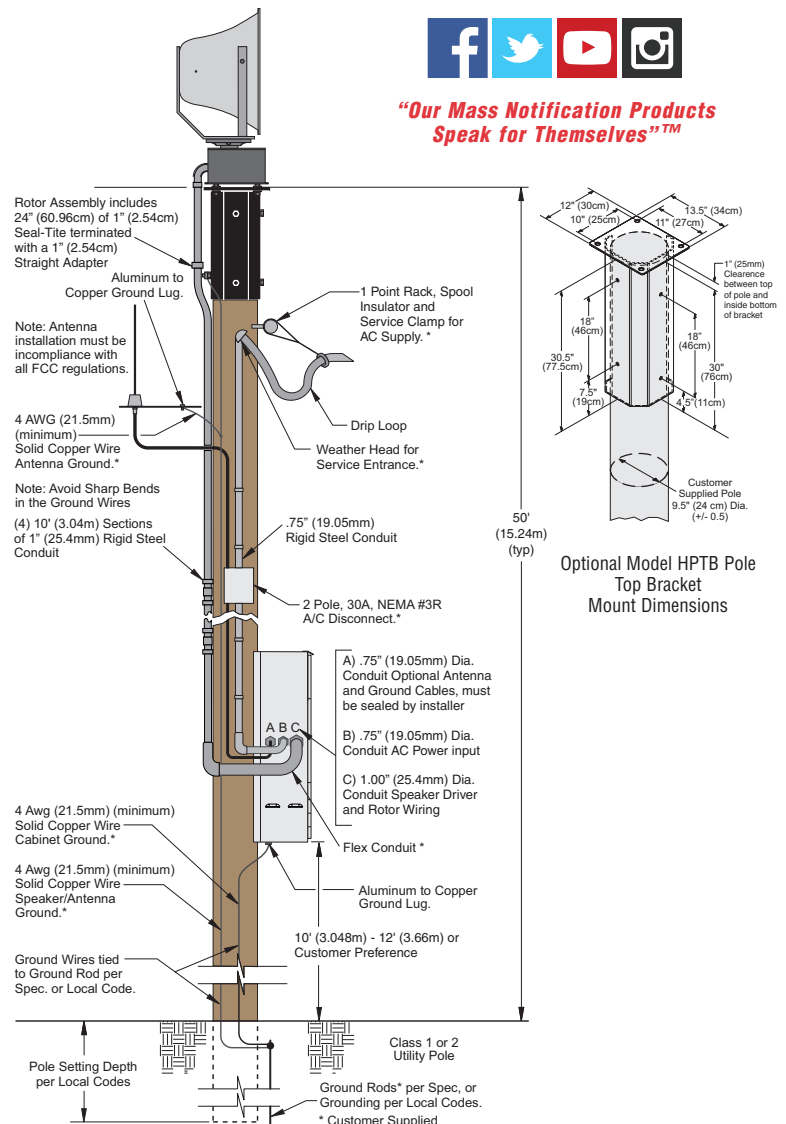
Whelen Engineering Company, Inc.

51 Winthrop Road
Chester, Connecticut 06412-0684
860-526-9504
800-637-4736
www.whelen.com
iowsales@whelen.com

Whelen Engineering Company, Inc.
reserves the right to upgrade its products with
design improvements without notification.
© 2019 Whelen Engineering Company, Inc.
Printed in the U.S.A.
103901J-09/25/19



**"Our Mass Notification Products
Speak for Themselves"™**



WARNING: This product may contain chemicals known to the State of California to cause cancer and birth defects or other reproductive harm. For more information, visit whelen.com/regulatory.