



**M I D T O W N**  
**C O N D O S**

MODERN ELEGANCE MEETS MIDTOWN CHARM  
IN BEAUTIFUL BELLEVILLE

ICH INTER-CONTINENTAL HOLDINGS



DESIGNED

WITH YOU IN MIND

# MODERN

## STYLED TOWNS IN BELLEVILLE

Introducing a new condominium located in the heart of the city, comprised of well designed 1, 2 plus den suites ranging from 473 sq.ft. to 1,396 sq.ft. Midtown Condos is in a location second to none. Come home to a unique blend of luxury and comfort with features and finishes that are both stylish and practical. With an elegant 6 storey contemporary look and modern design, in an area rich with conveniences - this will be the region's most highly sought-after condominium investment.

## A GREAT PLACE TO LIVE AND PLAY!

The city of Belleville is located on the north shore of the Bay of Quinte. Ideally situated between Toronto and Montreal, and less than one hour from the U.S. border, Belleville truly is at the center of it all. Approximately 49,000 people make Belleville their home and over 200,000 live within 30 minutes of the city. Belleville's bustling city streets contrast the rolling rural landscapes that surround them.



## BELLEVILLE & PRINCE EDWARD COUNTY

There's no shortage of things to do in Belleville and Prince Edward County, especially when it comes to being active and enjoying the outdoors—from cycling tours, hiking adventures and days at the beach, to world-renowned fishing, first-class golfing and bustling markets. Not to mention, you're given the opportunity to thrive on the inside with an array of spas, yoga studios and wellness centres.



YOUR ULTIMATE URBAN ADDRESS IN BEAUTIFUL BELLEVILLE



Elevation is an artist concept and Inter-Continental Holdings reserves the right to make changes without notice. E&O.E.

Expansive windows allow for a cascade of natural light while smartly designed open concept floor plans provide abundant space. Boasting refined natural details with a strong focus on both functionality and flair, these suite designs feature a welcoming gourmet kitchen leading into a generously-sized family room and an expansive master bedroom.

Contemporary in design with such great utilization of space, enjoy entertaining guests in a wide open concept layout and take in the fresh breeze off your over-sized balcony. Feel the rewards of living care-free in a sophisticated well-crafted upscale condominium that brings you to a new journey of a lifestyle you always dreamed of.



**MIDTOWN**  
CONDOS

MODERN ELEGANCE MEETS MIDTOWN CHARM

# Penthouse 1

2 BEDROOM + DEN, 2 BATH

Suite 407, 507, 415, 515, 606, 613  
1,396 SQ.FT. PLUS 77 SQ.FT. Balcony  
2 PARKING SPOTS



KEY PLAN: 4TH & 5TH FLOOR



ICH INTER-CONTINENTAL HOLDINGS



Floor plans are an artist concept and Inter-Continental Holdings, reserves the right to make changes without notice. E&O.E.



**MIDTOWN**  
CONDOS

MODERN ELEGANCE MEETS MIDTOWN CHARM

# Penthouse 2

## 2 BEDROOM + DEN

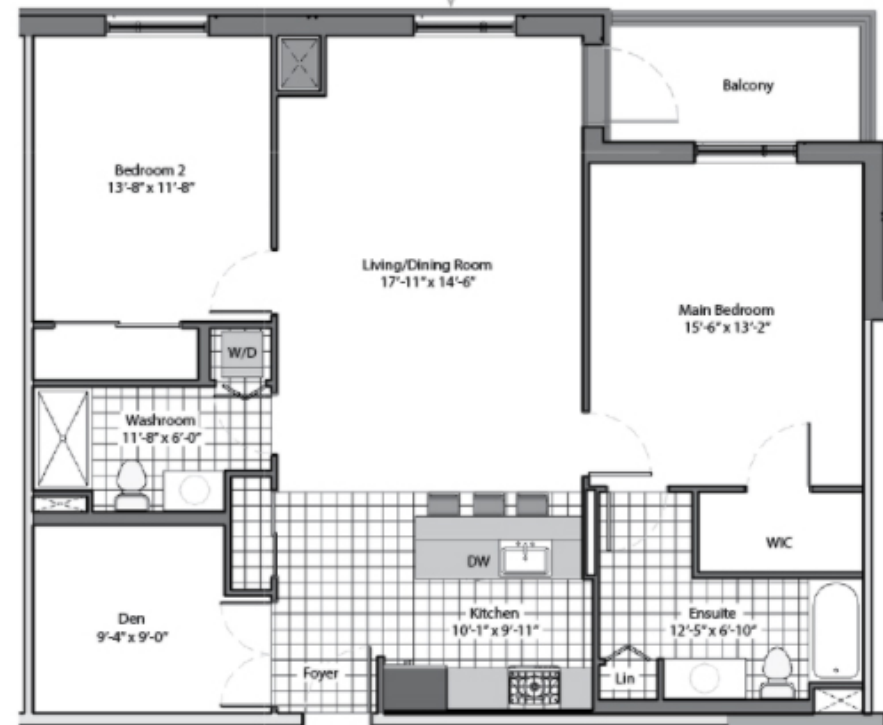
Suite 601, 608

1,311 SQ.FT. PLUS 80 SQ.FT. Balcony

2 PARKING SPOTS



KEY PLAN: 6TH FLOOR





Spacious

Interiors are artist' concept and Inter-Continental Holdings, reserves the right to make changes without notice. E.&O.E.



# Spacious

Interiors are artist' concept and Inter-Continental Holdings, reserves the right to make changes without notice. E.&O.E.





Interiors are artist's concept and Inter-Continental Holdings, reserves the right to make changes without notice. E.&O.E.



Timeless

Interiors are artist' concept and Inter-Continental Holdings, reserves the right to make changes without notice. E.&O.E.



**MIDTOWN**  
CONDOS

MODERN ELEGANCE MEETS MIDTOWN CHARM

Interiors are artist' concept and Inter-Continental Holdings, reserves the right to make changes without notice. E.&O.E.



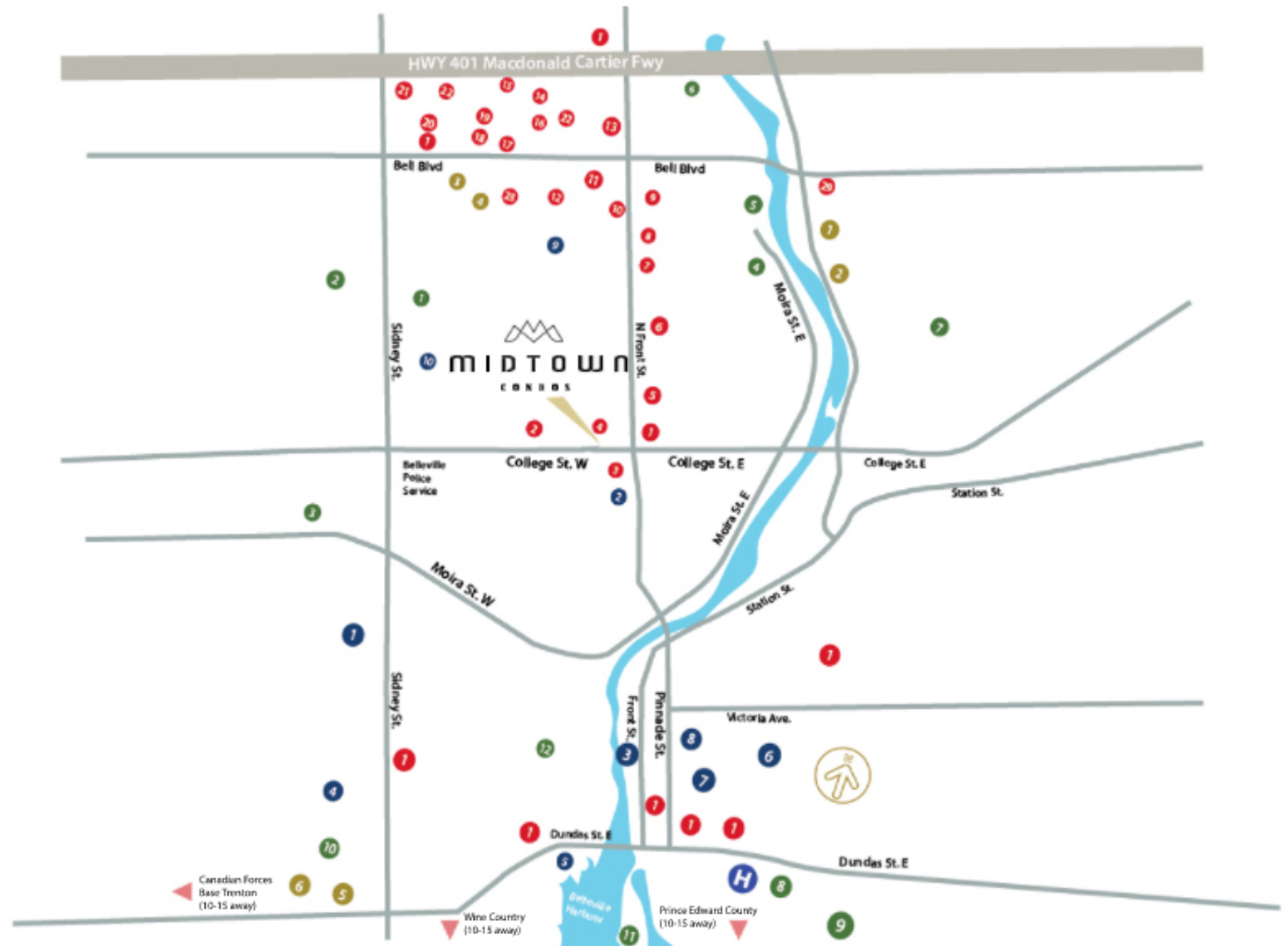
COLLEGE STREET



Belleville has countless experiences waiting to be discovered and a multitude of attractions and events that are sure to engage and entertain you. Whether you want cultural experiences, outdoor adventure, fantastic family fun, sporting events, or culinary delights, you'll find it all in Belleville. From river rafting to canoeing, hiking trails, cycling, outdoor water parks, award-winning wineries and fabulous scenic views, you'll be sure Belleville is your perfect place to live, work and play!

# AMENITIES

IT'S ALL HAPPENING  
RIGHT HERE!



## SHOPPING / RESTAURANTS / COFFEE SHOPS

- 1 Tim Horton's
- 2 Pizza Nova
- 3 Metro
- 4 Pizza Pizza
- 5 McDonald's
- 6 Harvey's
- 7 Arby's
- 8 Star Bucks
- 9 Fresco
- 10 Taco Bell
- 11 Up Front Shopping Centre
- 12 Canadian Tire
- 13 Joey's Seafood
- 14 Quinte Mall
- 15 Lone Star Texas Grill
- 16 Winners
- 17 Montana's
- 18 LCBO
- 19 Home Sense
- 20 Mark's Work Warehouse
- 21 Home Depot
- 22 Best Buy
- 23 The Beer Store
- 24 Rona

## RECREATION / GOLF

- 1 CAA Arena
- 2 Wally Dever Arena
- 3 World Elite Training
- 4 CrossFit Belleville
- 5 Bayview Golfing Centre
- 6 Bay of Quinte Golf & Country Club

## PARKS

- 1 Parkdale Veterans Park
- 2 Cascade Park
- 3 Village Park
- 4 Bellview Skate Park
- 5 Pirate Ship Park
- 6 Riverside Park
- 7 Hillcrest Park
- 8 Kinsmen Park
- 9 South Foster Park
- 10 Sir Mackenzie Bowell Park
- 11 Victoria Park
- 12 West Hill Greenspace Park

## SCHOOLS / COLLEGES

- 1 Academy of Learning College
- 2 Ministry Of Training, Colleges And Universities
- 3 Clarke College Belleville Campus
- 4 Loyalist College
- 5 Bowen Training Academy
- 6 Nicholson Catholic College
- 7 St. Michael Catholic School
- 8 Belleville Public Library and John M. Parrott Art Gallery
- 9 Georges Vanier Catholic School
- 10 Park Dale School



# BUILT

ON A SOLID REPUTATION

At Inter- Continental Holdings , these are not just words, but the goals we live up to when building each and every home. We have quickly become the premier homebuilder in the greater BELLEVILLE area. Founded in 1978 by Shahid and family, he personally oversees construction of every project until completion.

Attention to detail, quality construction and pride in workmanship is the foundation of the company.

ICH aligns itself with some of the best craftsmen in their trade who share the same level of passion and commitment to ensure the highest standard of quality is being delivered. Building a Condo or home is a big decision, and for most, a dream come true.

*It would be our pleasure to build the home of your dreams that fits your lifestyle and needs!*



INTER-CONTINENTAL HOLDINGS

LAND DEVELOPER BUILDER

130 QUEENS QUAY E., SUITE 815, TORONTO ON M5A 3Y5