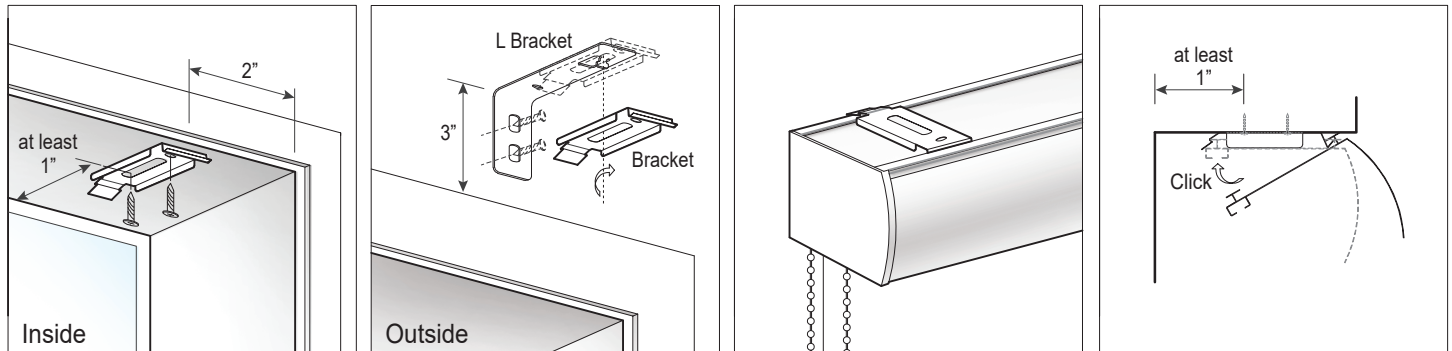


How to Install

Cassette **SL** Type (Slim Hidden)



Inside Mount Roller Shades

If you measured for inside mount roller shades, follow these simple installation steps:

1. Make a pencil mark **at least 1"** apart from the glass on the front top corner of the window casing.
Brackets must be installed no more than 2" away from the end of each side.
2. Hold your bracket up to the mark and mark the screw location. Repeat this process on the other side for the second bracket.
Make sure the brackets are placed straight.
3. Screw the brackets securely into place. A third bracket will be required if the blind is wider than 60" in between the two outer brackets.
4. Mount the blind – Hook the front first – then push in the back so it "clicks" into place.
5. Test your new blind. Pull them up and down slowly to ensure even movement.

Outside Wall / Molding Mount Roller Shades

If you measured for outside mount roller shades, follow these simple installation steps:

1. Hold the blind in the desired location and ensure it is centered and level. Make a pencil mark at each end.
2. Mark the L bracket position by measuring less than 2" away from each of the pencil marks (Wall Mount : 3" up from the top of the window).
L brackets must be installed no more than 2" away from the end of each side.
3. Hold the L bracket up to the marks and mark the screw locations.
4. Screw the L bracket into place. A third L bracket will be required if the blind is wider than 50" in between the two outer brackets.
5. Hook the regular bracket in sideways then turn to make it straight. Repeat this process for the second and the third brackets.
6. Mount the blind – Hook the front first – then push in the back so it "clicks" into place. Then, push the blind close to the wall.

DO NOT MAKE ANY DEDUCTIONS.

The factory will make the necessary deductions to accommodate for the upper rail and mounting brackets.

Tools You Will Need Pencil, Steel Measure Tape, Step ladder (if necessary), Screwdriver or power drill