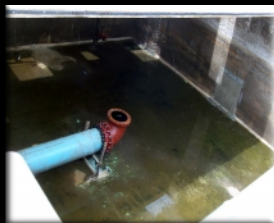


**FULL SPECTRUM
CLEANING - PREPARATION - RESTORATION - PRESERVATION
WATERPROOFING**



**WASTEWATER - POTABLE
CISTERNS
TANK SYSTEMS**



VALCON[™]
INDUSTRIES





FULL SPECTRUM TANK RESTORATION PRESERVATION & WATERPROOFING

ETCHING-PROFILING SURFACE PREP



Etchex is used to chemically profile and etch the surface of raw concrete and or cementitious substrates. All previous coatings need to be removed before application. This is used in conjunction with the Valcon Geltekk product to effervesce deleterious materials from the capillaries and micro pores of the substrate. Etchex is Stabitol® Safe, sulfuric acid solution that will not harm human or animal tissue, yet remains aggressive as described.

CLEANING & DE-GREASER SURFACE



Geltekk is a 100% GRAS (generally Accepted As Safe) gel material for cleaning and de-greasing virtually any substrate. Geltekk has no soap, animal fats or phosphates in the material and does not foam. Geltekk leaves a residual free surface when rinsed and or pressure washed clean.

CONCRETE DENSIFICATION-STABILIZATION



Restructor is an opaque fluid that is manufactured to penetrate deep into concrete and masonry substrates. Restructor will react with the free alkali forming calcium silicate and aero gels within the matrix of the material. This results in increases of compressive, restored pH, chemical resistance, abrasion resistance, freeze-thaw cycles, flexur

POLYMER CEMENT ADMIXTURE



The Flexcrete polymer is a specially blended and processed acrylic admixture for use with the Flexcrete Compound as a waterproofing membrane or as an admixture to all cement based, non modified, grouts, repair mortars, stucco, micro toppings, plasters, thin set, concrete mix and other such materials.

FLEXIBLE CEMENT BASED WATERPROOFING



Flexcrete waterproofing is a two component system comprised of the Flexcrete Polymer and the Flexcrete Compound. At 1/8" the system provides flexible cement based waterproofing membrane that can be used as a stand alone finish or as a waterproofing bond coat for tile, plaster, stucco, stone and other such materials. See *Technical Bulletin ONSITE FCAPP 2014 and AED-2 2014 for installation.*

SILICONE RUBBER CLEAR WATERPROOFING



Liquaseal is a Room Temperature Vulcanized, 100% silicone rubber in a mineral spirit base. When the carrier evaporates the remaining rubber will elongate 600%, bridge a 1/16" crack, will not yellow, provide chemical resistance and waterproofing on any porous surface or substrate.

