

# FLEXCRETE WATERPROOFING SYSTEMS

TYPICAL SECTION THRU APPLICATION DETAILS

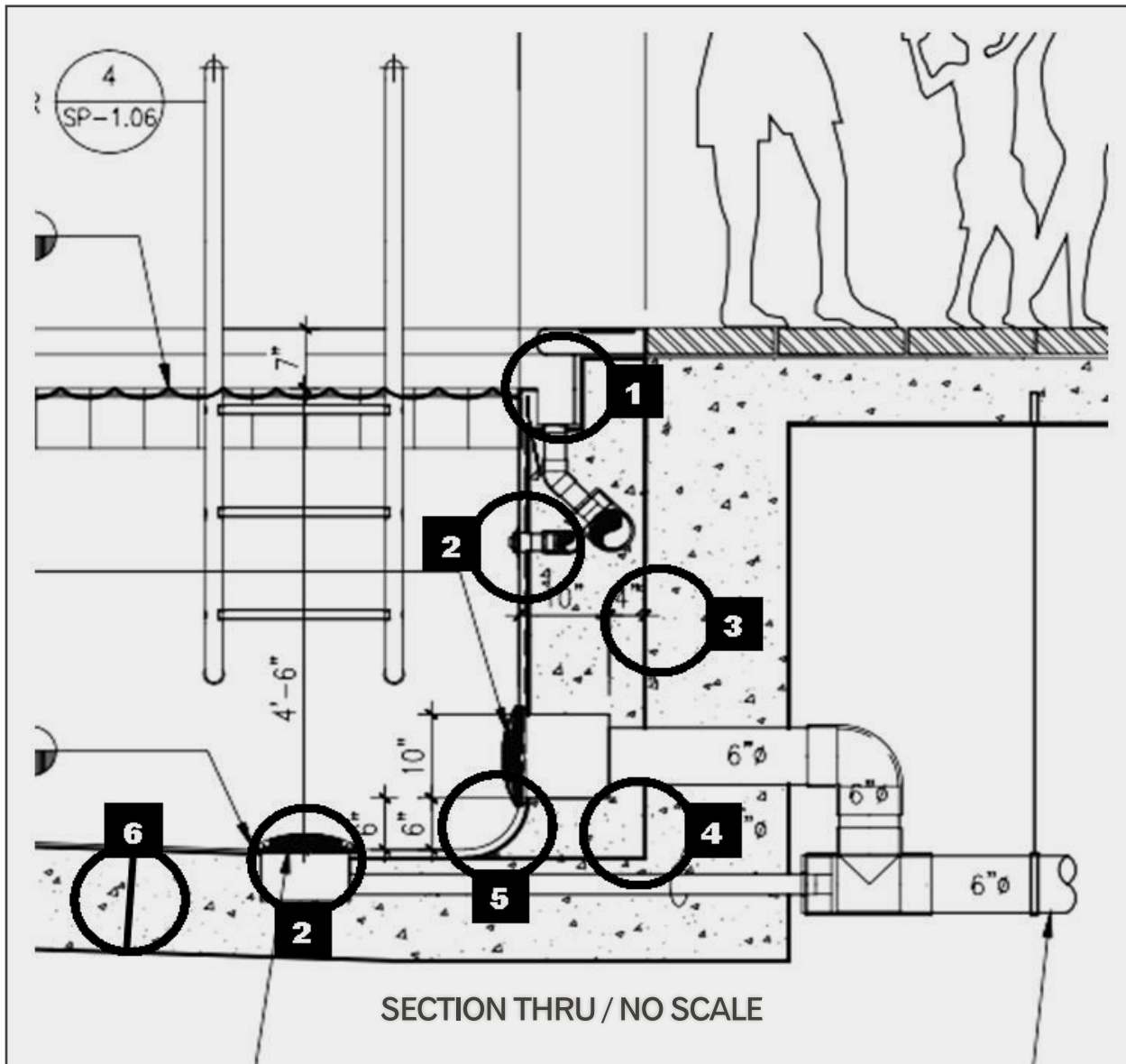
TECHNICAL BULLETIN AED-2 2014

WWW.VALCON-INDUSTRIES.COM

1-866-311-9737

PAGE 1 OF 2 SEE BACK

## CROSS SECTION THRU TYPICAL POOL SHELL / VAULT TYPICAL WATERPROOFING DETAILS AS INDICATED



### SECTION THRU DETAIL DESCRIPTION

- |                                   |                                   |
|-----------------------------------|-----------------------------------|
| 1. Gutter/Trough Detail           | 4. Wall/Floor Intersection Detail |
| 2. Thru Wall/Floor Fitting Detail | 5. Covered Base Detail            |
| 3. Vault Wall Detail              | 6. Cold Joint Detail              |



ARCHITECTURAL & ENGINEERING DETAILS

The following expanded details from page one depict the installation requirements required by Valcon Industries, LLC in order to create a Monolithic Waterproofing Membrane System. These details are considered standard for the installation of Flexcrete on concrete substrates. However, under specific conditions or special design criteria additional techniques or materials may be required such as Valcon's Flex N Seal System for crack / cold joint repair. If it is in question or is in reference to the Valcon Warranty Program, Site Specific Design may apply. Contact you local Valcon representative or call 1-866-311-9737 for technical assistance. The Valcon Team

## FOLLOW DETAILS AS SHOWN BELOW FOR CONCRETE AND MASONRY VESSELS, TANKS, CONTAINMENT, SWIMMING POOLS AND SPAS



- Gutter / Trough Waterproofing Detail:**
1. All surfaces shall be damp not wet.
  2. A base coat of Flexcrete shall be applied
  3. Flexcrete reinforcing mesh shall be applied.
  4. Mesh shall be fully embedded into Flexcrete compound.



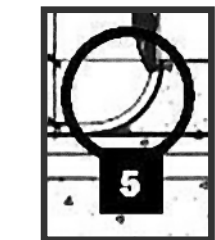
- Thru Wall / Floor Waterproofing Detail:**
1. All surfaces shall be damp not wet.
  2. Surrounding perimeter of extrusion shall be excavated as shown under excavation details.
  3. Surface shall be filled with Flexcrete as indicated.



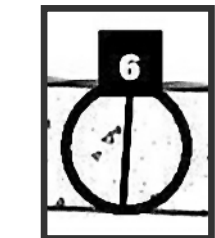
- Vault Wall Waterproofing Detail:**
1. All surfaces shall be damp not wet.
  2. A base coat of Flexcrete shall be applied
  3. Flexcrete shall be allowed to cure overnight.
  4. Second application of Flexcrete shall be applied.



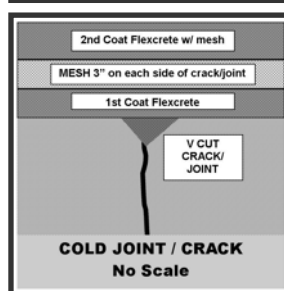
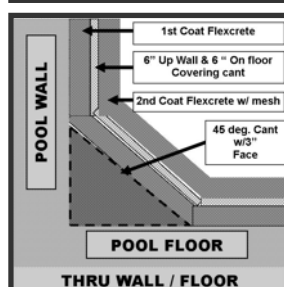
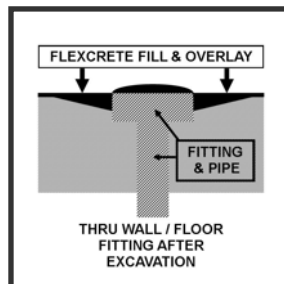
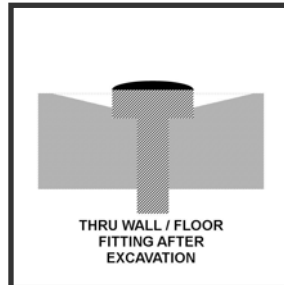
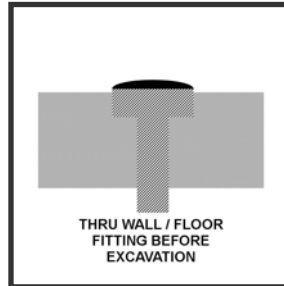
- Wall / Floor Intersection Waterproofing Detail:**
1. See expanded detail on right.
  2. A base coat of Flexcrete shall be applied
  3. Flexcrete reinforcing mesh shall be applied
  4. Mesh shall be fully embedded into the Flexcrete.



- Coved Base Waterproofing Detail:**
1. Flexcrete shall be applied over entire cove area.
  2. Flexcrete reinforcing mesh shall be applied 6" onto floor and 6" on vertical wall, covering the cove.
  3. Flexcrete is then placed over the reinforcing mesh.



- Cold Joint Waterproofing Detail:**
1. V out intersecting crack/cold joint
  2. Clean well
  3. Apply Flexcrete and allow to cure.
  4. Apply Flexcrete reinforcing mesh 3" on either side of crack.
  5. Apply finish coat of Flexcrete embedding mesh to fully covered.



EXCAVATION - WALL FLOOR INTERSECTION - COLD JOINT - DETAILS

APPLICATION SPECIFIC DETAILS

### SECTION THRU DETAIL DESCRIPTION

- |                                   |                                   |
|-----------------------------------|-----------------------------------|
| 1. Gutter/Trough Detail           | 4. Wall/Floor Intersection Detail |
| 2. Thru Wall/Floor Fitting Detail | 5. Coved Base Detail              |
| 3. Vault Wall Detail              | 6. Cold Joint Detail              |