

# Advent

LABELING MACHINES

[WWW.ADVENTMACHINES.COM](http://WWW.ADVENTMACHINES.COM)

[WWW.ADVENTMACHINE.NET](http://WWW.ADVENTMACHINE.NET)



**TEL: 323-728-5367**

**FAX: 323-728-2443 • EMAIL: [adventlabeler@gmail.com](mailto:adventlabeler@gmail.com)**

**6815 E. WASHINGTON BLVD., COMMERCE, CA 90040**



# General Features

**A**dvent Labeling Machines are the ultimate in versatility whether you have pressure-sensitive or plain paper labels. They provide an economical method for labeling short runs with ease and accuracy. In operation, spot or wrap around labels are applied to round containers made of glass, metal, plastic or fiber while adjustments for these containers and labels are made in minutes. This makes easy work of short production runs whether the container is a small vitamin bottle or a large plastic gallon jug.

Advent Labelers are fabricated using stainless rollers and steel parts that are powder coated for long lasting corrosion resistance and durability. The mechanical workings of the machine are covered with a chemical resistant ABS Plastic or aluminum cover for added safety and to make the machine more user friendly.

Advent Labelers come with a machine stand and casters for increased mobility but some models can be easily converted to a table top configuration for convenience.

The operation of Advent Labelers is also very simple. As the operator removes a labeled container from the machine with their left hand, they apply another container to the machine with the right hand. In this way, one smooth movement across the top of the machine is achieved at speeds of 20 to 40 containers per minute. Containers can be labeled both filled or empty. When empty containers are labeled, a pressure roller is positioned over it to give it added weight. When filled containers are labeled, the operator can remove the labeled container from the machine and place it directly into the shipping box. This method reduces costs because only one person is used to both label and pack.

**“All of our machines come with a 2-year Warranty against any faulty parts and workmanship”**

*Carl Kasak*

The Advent Model 200 is packed with features that may not be easily noticed from first observation but hidden beneath the tough chemical resistant ABS plastic cover is a labeling machine capable of satisfying the needs of the most discriminating buyer.

You can say that you are using too much glue and there are raised rings around your container not to mention the glue that can be seen through the label itself. Problem solved – eliminate the majority of the glue on the label and you will eliminate these problems. The Advent Labeler does exactly that, by applying glue to only the ends of the label with its patented end gluing feature that requires no adjustments for different length label. The machine does it automatically. What's more, this skip-glue feature is standard on the 200.

Though Advent Labelers are considerably less expensive than other comparable labelers on the market, quality and dependability are not sacrificed in the least.



ADVENT MODEL 200

ADVENT MODEL 200

ADVENT MODEL 200

ADVENT MODEL 200



**Model 205**

## FEATURES

- Applies labels to round containers from one ounce to one gallon
- Applies glue to the ends of the label or the whole label.
- Automatically adjust glue pattern.
- Labels 20 to 40 containers per minute.
- Fast container size change with no change parts necessary,
- Automatic label feed via standard large (approx. 300 labels) capacity label hopper.
- Machine stand with casters.
- Two Year Warranty.

## CONTAINER SPECIFICATIONS

- Container Diameter: 1" to 12" (2.54 cm. to 30.48 cm.)
- Label Size Min: 3/4"W by 4"L (1.90 cm. by 10.16 cm.)
- Label Size Max: 8.5"W by 25"L (21.59cm. by 63.5 cm.)

## MACHINE SPECIFICATIONS

- Machine Size: 20"W x 66"L x 36"H (50 cm. x 66 cm. x 91 cm.)
- Electrical: 110 v, 60 Hz, 10 amp. 220 volt available.

◀ Model 205 (shown at left) can label 5 gallon containers.



**T**he Advent Model 300 Pressure-

Sensitive Labeling Machine is unique when compared to other semi-automatic P-S labelers. With its ingenious design, air pressure and an electronic photo-eye are not required in its operation. Air pressure on other machines is required to lift the container up to the point of label application and then down where it is removed. This raising and lowering of the container wastes time. Advent has chosen to apply the label from the bottom of the container and use the weight of the container to press on the label. This method saves application time and increases labeling speed considerably. On other machines, the label sensing switch senses the space between labels on the label web in order to tell the machine when to feed a label. Advent does not require this switch which enables it to apply butt cut labels along with die cut labels.

The Advent Model 300 is 3-shift labeler. The 300 can easily label up to 10,000 containers in 8-hours. It can handle continuous operation and is backed by Advent's 2-year warranty.



*The 300 can outperform many automatic machines, especially on difficult label stocks such as plastic, mylar, polyester and Tyvek.*



## FEATURES

- Applies labels to round containers from one ounce to one gallon
- Labels 20 to 40 containers per minute.
- Fast container size change with no change parts necessary.
- Machine stand with casters.
- Two Year Warranty.

## CONTAINER SPECIFICATIONS

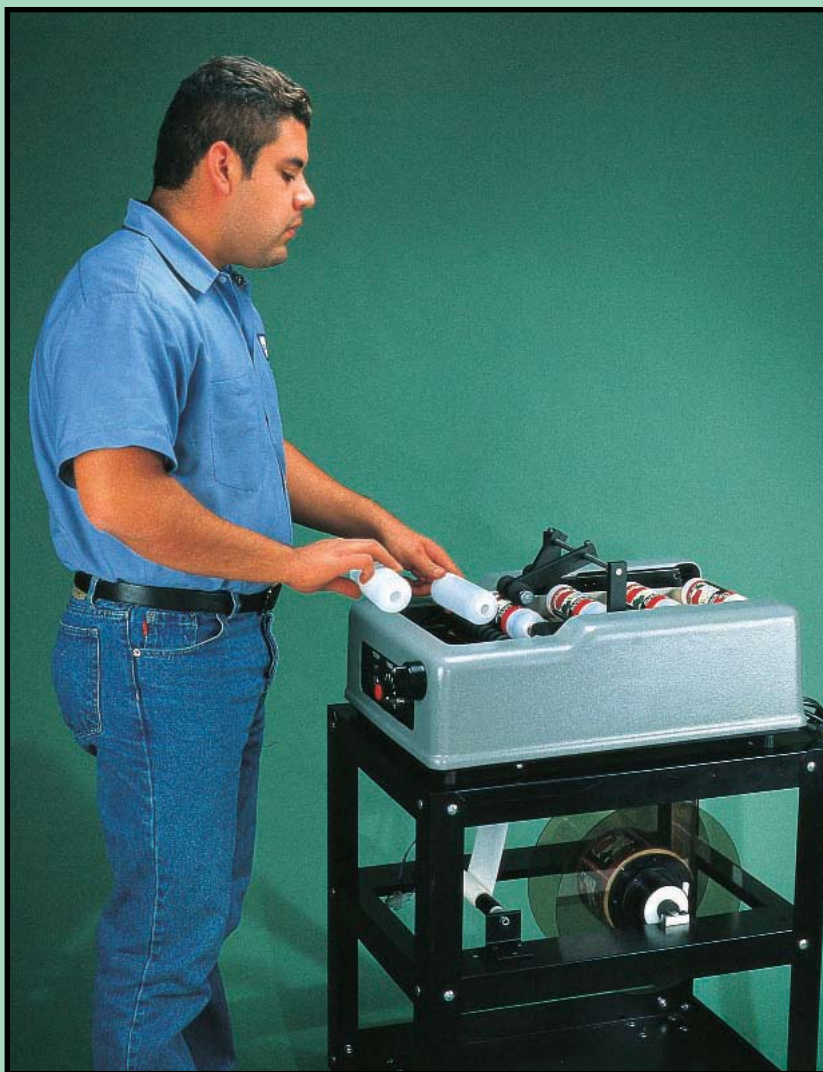
- Container Diameter: 3/4" to 12" (1.90 cm. to 30.48 cm.)
- Label Size Min: 3/4"W by 1"L (1.90 cm. by 2.54 cm)
- Label Size Max: 8"W by 20"L (20.32 cm by 50.8 cm.)

## MACHINE SPECIFICATIONS

- Machine Size: 20"W x 26"L x 36"H (50 cm. x 66 cm. x 91 cm.)
- Electrical: 110 v, 60 Hz, 5 amp. standard 220 volt available.







**T**he Advent Model 310 is what you might call an almost automatic Pressure-Sensitive labeling machine. Containers are fed into the machine by hand but are ejected automatically. As the operator places the container into the machine the previous labeled container is pushed forward and onto a short gravity conveyor. If the containers are filled, they roll forward to the packing station. If they are empty, they can roll off into a box or go directly to the filling line.

By handling each container only once, labeling speed is increased considerably. Speeds up to 30 to 40 containers per minute are not uncommon.

## FEATURES

- Applies labels to round containers from one ounce to one gallon
- Labels 30 to 50 containers per minute.
- Fast container size change with no change parts necessary,
- Machine stand with casters.
- Two Year Warranty.

## CONTAINER SPECIFICATIONS

- Container Diameter: 1/2" to 12" (.85 cm. to 30.489 cm.)
- Label Size Min: 3/4"W by 1"L (1.90 cm. by 2.54 cm)
- Label Size Max: 8"W by 20" L (20.32 cm by 50.8 cm.)

## MACHINE SPECIFICATIONS

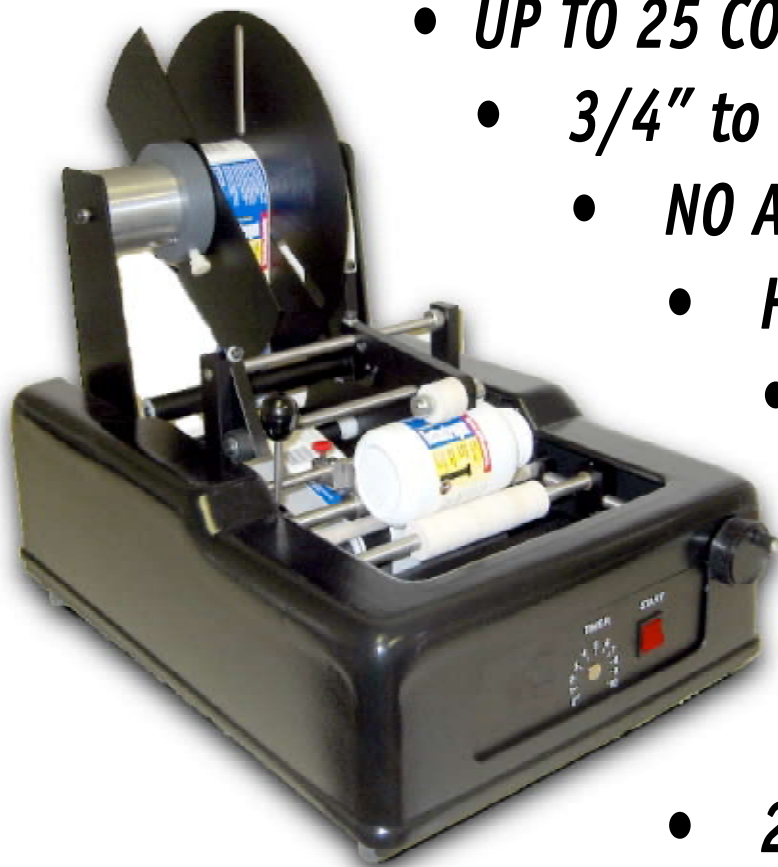
- Machine Size: 20"W x 26"L x 36"H (50 cm. x 66 cm. x 91 cm.)
- Electrical: 110 v, 60 Hz, 6 amp. standard 220 volt available.



*The Advent 310 is the most versatile labeler on the market today. From chapstick size containers to 1-gallon plastic jugs, the Advent 310 can label almost any round container with ease.*

# 302

## LOW COST, SEMI-AUTOMATIC PRESSURE SENSITIVE LABELER



- **UP TO 25 CONTAINERS PER MINUTE**
- **3/4" to 12" IN DIAMETER**
- **NO AIR REQUIRED**
- **HAND TRIGGER**
- **AUTOMATIC BRAKE ARM**
- **QUICK CHANGEOVERS**
- **ALL TYPE CONTAINERS:  
METAL, PLASTIC, & GLASS  
WITH OR WITHOUT RIDGES.**
- **2-YEAR WARRANTY**

*\*Does Not Includes Cart  
and Overhead Pressure Arm*

**TECHNICAL SPECIFICATIONS: ELECTRIC: 110V, SHIPPING WEIGHT 65#**

**LABEL AND CONTAINER SPECIFICATIONS:**

**MINIMUMS:**  
**MAXIMUMS:**

**LABEL WIDTH: 3/4"**  
**LABEL WIDTH: 8"**

**LENGTH: 1"**  
**LENGTH: 20"**

**CONTAINER: 1" OD**  
**CONTAINER: 12" OD**

**LABELS MUST BE WOUND ON A 3" FIBER CORE IN COPY POSITION #3 or #4 (#3 IS BEST)**



*Insert container and tap lever to apply label.*



*Label is applied within seconds, up to 25 cps.*



*Spot or wraparound, perfect accuracy, no wrinkles.*





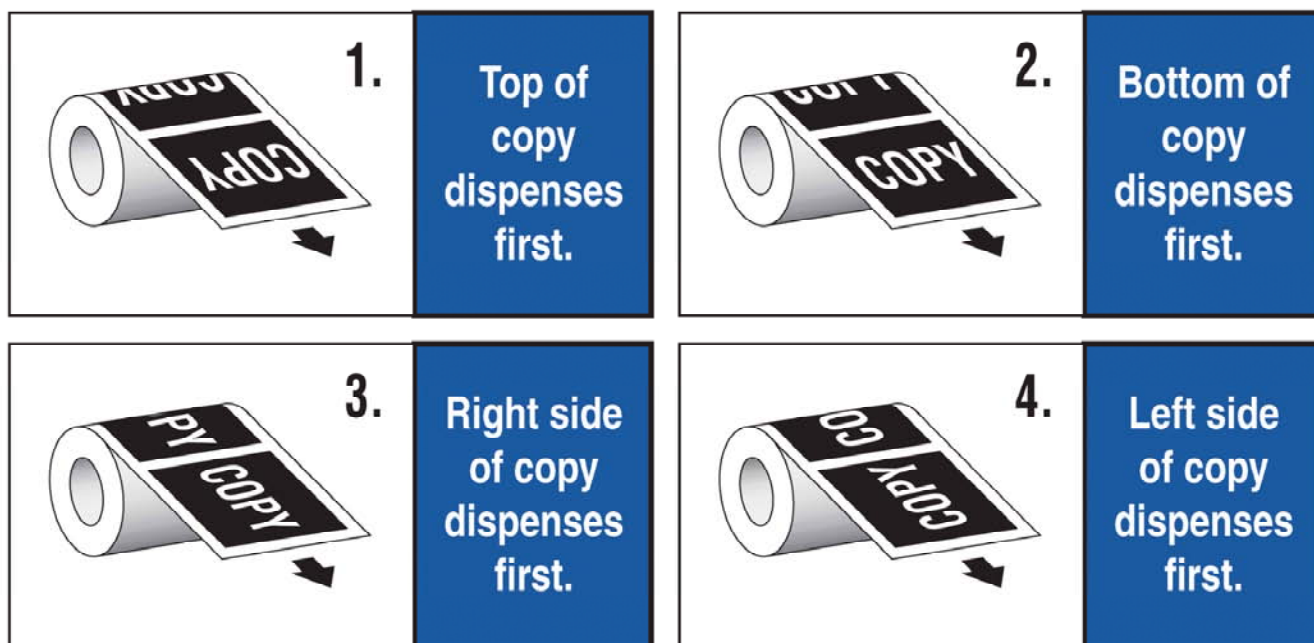
# ADVENT LABELERS

6815 E. Washington Blvd., Commerce, CA 90040  
 Tel: 323-728-5367 or 800-846-7716 • Fax: 323-728-2443  
[www.adventmachines.com](http://www.adventmachines.com)

*"Equipment to Label Your Round Products and Containers"*

## COPY POSITION CHART for PRESSURE-SENSITIVE LABEL ROLLS

1. Advent 300 Series machines are designed to work with copy positions 3 or 4 for most containers and products. Examine your product for exceptions that may indicate use of copy positions 1 or 2
2. Copy position 3 is recommended because it allows the 300 series labelers to accommodate 10" or taller containers or products (see photo at bottom)
3. Most label materials are acceptable but we request sample rolls be sent to our office
4. Labels must be wound onto 3" fiber core
5. Labels can be either butt-cut (kiss-cut) or die-cut ( $\pm 1/8$ " space between labels)
6. Perforated labels are not recommended (send samples if perforated labels are required)
7. Maximum outside diameter of label roll should be 10" (contact us if diameter is larger)
8. Release liner should be .0025" or less and be 40LB SCK (Super Calendar Kraft) or 50LB PC (Poly Coated)



This picture shows the Advent 300 labeling a 1-gallon container. The labels are in copy position 3. This allows the open frame on the right side of the machine to accommodate the excess height of this tall container.

Important: The customer assumes all risk and liability for design and engineering of label stock, label liner and product labeled. Advent Label Applicator Co., Inc. is not responsible for the performance of label materials and warrants only the performance of Advent machines as covered by the Advent machine warranty and makes no other warranty, expressed or implied, and liability shall be limited to the repair or replacement of the machine or repayment of the purchase price of the machine less freight. See Advent brochure or owners' manual for 2-year limited warranty.

# ADVENT HSC HOT STAMP CODER

The Advent HSC is a motor-driven hot stamp coder that allows your Advent 300 series labeler to print date codes, lot numbers, prices and other variable information. The HSC provides a unique, low cost method of imprinting and labeling your product in one step.

## FEATURES

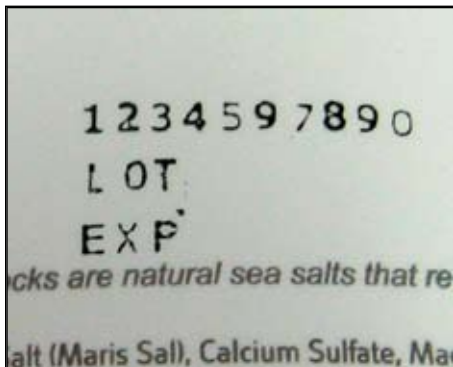
- No Air Required, Electrically Driven.
- Includes 2mm (6-point) Brass Typeset
- Imprints Vertically or Horizontally
- Easy Horizontal and Vertical Positioning for Exact Code Placement
- 7/8" x 1-3/4" Print Area, Up to 3-Lines of Text
- Uses 500' Resin-Based Ribbon for Permanent Marking
- Adjustable Ribbon Pitch
- Imprints Both Synthetic and Paper Labels
- Available for Advent 300, 302 and 310.



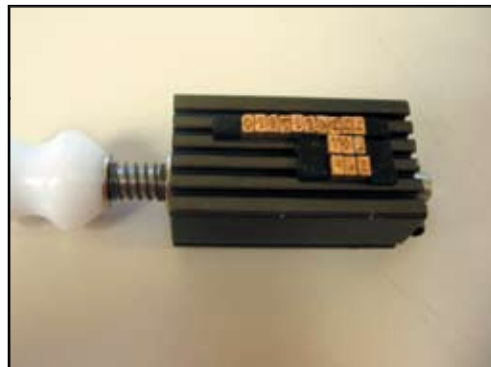
*HSC MOUNTED ON ADVENT 300*



*IMPRINT ON PLASTIC LABEL*



*3 LINE SAMPLE, FILM*



*TYPECHASE WITH 2mm, 6pt TYPE*



*CODED AND LABELED BOTTLE*



# SMART-JET PLUS INKJET CODER

MOUNTS ONTO ANY ADVENT 300 SERIES LABEL APPLICATOR

PRINTS LOT NUMBERS, BATCH CODE, USE BY DATE, SECURITY CODES, BARCODES



The Compact Printer  
That's Cracked The Code.



# \$3,190

The reliable, compact inkjet coder for your label marking and coding needs  
Hi-resolution readability on most label materials with fast drying ink  
Each snap-in / snap-out ink cartridge provides a new built-in printhead  
2.8" screen with automatic rotating multi-color display and 6 menu languages

Real time interface to report current operation of printer to mobile devices.

Quick change ink cartridge-printhead means no mess and virtually no downtime or maintenance

Smart-Jet Plus Inkjet Coder with photo-eye and Advent engineered brackets. Complete system is mounted onto any Advent 300 Series label applicator. Includes wireless keyboard, 1 black ink cartridge-printhead and owner's manual  
Additional 42ml black ink cartridge-printhead - \$ 137.00





# ADVENT

LABEL APPLICATOR CO., INC.  
*Semi-Automatic, Round Product Labelers for  
Pressure Sensitive and Plain Paper Labels*

## PICTURES OF APPLICATIONS

FOR DEMONSTRATION AND OPERATION VIDEOS PLEASE SEE

<https://www.youtube.com/user/adventmachine/>



**ADVENT 310 PUSH-THRU  
PRESSURE SENSITIVE LABELS  
WATER BOTTLES**



**ADVENT 200  
PLAIN PAPER LABELER  
PAPER FIBER CANS**



**ADVENT 300  
PRESSURE SENSITIVE LABELS  
LARGE PLASTIC JARS**



**ADVENT 310 PUSH-THRU  
PRESSURE SENSITIVE LABELS  
CAULKING TUBES**



**ADVENT 200  
PLAIN PAPER LABELER  
PLASTIC JAR RECESSED AREA**



**ADVENT 300  
PRESSURE SENSITIVE LABELS  
CLEAR LABEL STOCK**



**ADVENT 310 PUSH-THRU  
PRESSURE SENSITIVE LABELS  
VITAMIN BOTTLES**



**ADVENT 200  
PLAIN PAPER LABELER  
PLASTIC VITAMIN BOTTLE**



**ADVENT 300HSC  
PRESSURE SENSITIVE LABELS  
BOSTON PLASTIC ROUNDS**



**ADVENT 310 PUSH-THRU  
PRESSURE SENSITIVE LABELS  
PLASTIC QUART BOTTLES**





**ADVENT 302  
PRESSURE SENSITIVE LABELS  
STRETCH FILM ROLL**



**ADVENT 310 PUSH-THRU  
PRESSURE SENSITIVE LABELS  
LIP BALM**



**ADVENT 200ALR  
OPTIONAL REGISTRATION  
1 GALLON BLEACH**



**ADVENT 302  
PRESSURE SENSITIVE LABELS  
PEANUT BUTTER**



**ADVENT 300  
SMALL DIAMETER  
MEDICAL VIALS**



**ADVENT 300AFS  
OPTIONAL REGISTRATION  
MASON BOTTLES**



**ADVENT 302  
PRESSURE SENSITIVE LABELS  
CLEAR LABEL STOCK**



**ADVENT 300HSC  
HOT STAMP CODING  
UP TO 3 LINES OF CODING**



**ADVENT 201  
1 GALLON PAINT CAN  
WITH EAR REGISTRATION**



**ADVENT 302  
PRESSURE SENSITIVE LABELS  
NUTRACEUTICAL JUGS**



**ADVENT 205  
PLAIN PAPER LABELER  
5-GALLONS PAILS**



**ADVENT 305  
PRESSURE SENSITIVE LABELS  
TAPERED CONTAINERS**



# ADVENT LABELERS PRICE LIST

Semi-Automatic Label Application Machines  
JUNE 2021

6815 E. Washington Blvd., Commerce, CA 90040

Tel: 323-728-5367 Fax: 323-728-2443

[www.adventmachines.com](http://www.adventmachines.com)



200

- 200 Hotmelt Standard Model with Wheeled Cart** **\$8,190.00**  
*Plain Paper Labeler with Standard Skip-Glue*  
 Minimums: label width: 3/4" length: 4" container: 1" OD  
 Maximums: label width: 8.5" length: 25" container: 12" OD



205

- 205 Hotmelt Pail Model with Wheeled Cart** **\$9,490.00**  
*5-Gallon Labeler with Automatic Lug Registration*  
 Minimums: label width: 3/4" length: 4" container: 3" OD  
 Maximums: label width: 8.5" length: 25" container: 12" OD  
*\*Advent strongly recommends hotmelt systems over cold glue.; however cold glue systems are available with testing.*



300

- 300 Pressure Sensitive Standard Model with Wheeled Cart** **\$4,990.00**  
*Pressure Sensitive Labeler with Automatic Label Feed Activation*  
 Minimums: label width: 3/4" length: 1" container: 1" OD  
 Maximums: label width: 8" length: 20" container: 12" OD



301

- 301 Pressure Sensitive Manual (Hand Crank) Labeler (No Cart)** **\$2,390.00**  
*Manual Labeler that Requires No Electricity*  
 Minimums: label width: 3/4" length: 1" container: 1" OD  
 Maximums: label width: 8" length: 20" container: 12" OD



302

- 302 Pressure Sensitive Basic Labeler (No Cart)** **\$3,590.00**  
*Pressure Sensitive Labeler w/ Hand Activated Label Feed*  
 Minimums: label width: 3/4" length: 1" container: 1" OD  
 Maximums: label width: 8" length: 20" container: 12" OD



310

- 310 Pressure Sensitive Push-Thru with Wheeled Cart** **\$5,990.00**  
*Unique Push-Thru Labeler for High Output Applications*  
 Minimums: label width: 3/4" length: 1" container: 1/2" OD  
 Maximums: label width: 8" length: 20" container: 12" OD

## OPTIONS AND CODERS

- OPA Overhead Pressure Arm Assembly** **\$357.50**  
 Applies pressure against lightweight containers to insure proper adhesion.  
 Included on all labelers (200, 300, 301, 302, & 310) unless specified.
- FBO Front/Back Option** **\$1,000.00**  
 Allows Model 300 and 310 to apply front label (A) and rear label (B).  
 Labels must alternate on single roll (A-B-A-B). Requires Qualification.
- ALR Automatic Label Registration Option** **\$800.00**  
 Allows machine to position label on container by registering container's lug or handle.  
 An example would be a 1-gallon bleach type container. Available on 200, 300 and 310.
- AFS Foot Pedal Registration** **\$700.00**  
 Allows machine to position label on container without lugs or handle.
- A220 220 Volt AC Modification** **\$500.00**  
 Conversion of all electrical components to operate with 220V.
- HSC Hotstamp Coder for Advent 300 and 310 Model** **\$3,190.00**  
 Accessory to code mark pressure sensitive labels. Air not required.  
 Does include standard 2mm or 3mm brass letter/number type.
- 80000P SMART-JET+ INKJET CODER 1 TO 6 LINES (TIJ)** **\$3,190.00**  
 Small character, all-surfaces inkjet coder designed for coding directly onto product.  
 Can be integrated with an Advent labeler for coding the bottom of a bottle. Made in the USA.

FOB Commerce, CA 90040. Prices and specifications subject to change without notice. Taxes and shipping/handling are extra.

*We strongly recommend sending in labels and containers for testing and setup.*

**"Ask about the Advent Advantage" since 1988 • 2-Year Limited Warranty • Made in the USA**