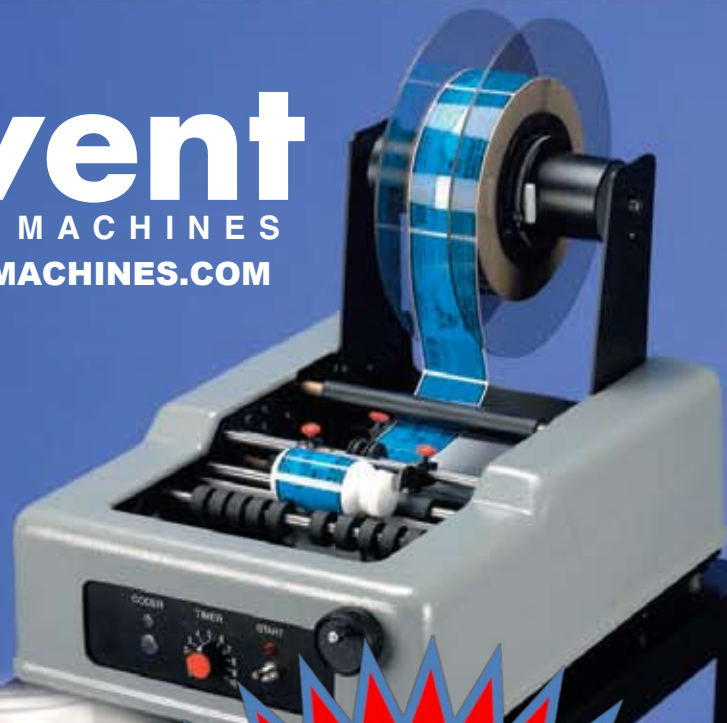


Advent

LABELING MACHINES

WWW.ADVENTMACHINES.COM



****Show Special****
Free Shipping
Anywhere in the U.S.
Or 5% Off
(Offer Valid for 30 Days)



Introducing our
New Advent
Touch Screen Models
Introductory Pricing on Last Page



Scan QR Code for a
digital copy of this
price catalog



TEL: 800-846-7716 OR 323-728-5367

FAX: 323-728-2443 • EMAIL: adventlabeler@gmail.com

6815 E. WASHINGTON BLVD., COMMERCE, CA 90040

General Features

Advent Labeling Machines are the ultimate in versatility whether you have pressure-sensitive or plain paper labels. They provide an economical method for labeling short runs with ease and accuracy. In operation, spot or wrap around labels are applied to round containers made of glass, metal, plastic or fiber while adjustments for these containers and labels are made in minutes. This makes easy work of short production runs whether the container is a small vitamin bottle or a large plastic gallon jug.

Advent Labelers are fabricated using stainless rollers and steel parts that are powder coated for long lasting corrosion resistance and durability. The mechanical workings of the machine are covered with a chemical resistant ABS Plastic or aluminum cover for added safety and to make the machine more user friendly.

Advent Labelers come with a machine stand and casters for increased mobility but some models can be easily converted to a table top configuration for convenience.

The operation of Advent Labelers is also very simple. As the operator removes a labeled container from the machine with their left hand, they apply another container to the machine with the right hand. In this way, one smooth movement across the top of the machine is achieved at speeds of 20 to 40 containers per minute. Containers can be labeled both filled or empty. When empty containers are labeled, a pressure roller is positioned over it to give it added weight. When filled containers are labeled, the operator can remove the labeled container from the machine and place it directly into the shipping box. This method reduces costs because only one person is used to both label and pack.

**“All of our machines come with a 2-year Warranty
against any faulty parts and workmanship”**

Carl Kasak

The Advent Model 200 is packed with features that may not be easily noticed from first observation but hidden beneath the tough chemical resistant ABS plastic cover is a labeling machine capable of satisfying the needs of the most discriminating buyer.

You can say that you are using too much glue and there are raised rings around your container not to mention the glue that can be seen through the label itself. Problem solved – eliminate the majority of the glue on the label and you will eliminate these problems. The Advent Labeler does exactly that, by applying glue to only the ends of the label with its patented end gluing feature that requires no adjustments for different length label. The machine does it automatically. What's more, this skip-glue feature is standard on the 200.

Though Advent Labelers are considerably less expensive than other comparable labelers on the market, quality and dependability are not sacrificed in the least.



NEW MODEL TS-200

FEATURES

- Applies labels to round containers from one ounce to one gallon
- Applies glue to the ends of the label or the whole label.
- Automatically adjust glue pattern.
- Labels 20 to 40 containers per minute.
- Fast container size change with no change parts necessary,
- Automatic label feed via standard large (approx. 300 labels) capacity label hopper.
- Machine stand with casters.
- Two Year Warranty.

CONTAINER SPECIFICATIONS

- Container Diameter: 1" to 12" (2.54 cm. to 30.48 cm.)
- Label Size Min: 3/4"W by 4"L (1.90 cm. by 10.16 cm.)
- Label Size Max: 8.5"W by 25"L (21.59cm. by 63.5 cm.)

MACHINE SPECIFICATIONS

- Machine Size: 20"W x 66"L x 36"H (50 cm. x 66 cm. x 91 cm.)
- Electrical: 110 v, 60 Hz, 10 amp. 220 volt available.



New Digital Home Screen

The Advent Model 300 Pressure-

Sensitive Labeling Machine is unique when compared to other semi-automatic P-S labelers. With its ingenious design, air pressure and an electronic photo-eye are not required in its operation. Air pressure on other machines is required to lift the container up to the point of label application and then down where it is removed. This raising and lowering of the container wastes time. Advent has chosen to apply the label from the bottom of the container and use the weight of the container to press on the label. This method saves application time and increases labeling speed considerably. On other machines, the label sensing switch senses the space between labels on the label web in order to tell the machine when to feed a label. Advent does not require this switch which enables it to apply butt cut labels along with die cut labels.

The Advent Model 300 is 3-shift labeler. The 300 can easily label up to 10,000 containers in 8-hours. It can handle continuous operation and is backed by Advent's 2-year warranty.



NEW
MODEL
TS-300

FEATURES

- Applies labels to round containers from one ounce to one gallon
- Labels 20 to 40 containers per minute.
- Fast container size change with no change parts necessary.
- Machine stand with casters.
- Two Year Warranty.

CONTAINER SPECIFICATIONS

- Container Diameter: 3/4" to 12" (1.90 cm. to 30.48 cm.)
- Label Size Min: 3/4"W by 1"L (1.90 cm. by 2.54 cm)
- Label Size Max: 8"W by 20"L (20.32 cm by 50.8 cm.)

MACHINE SPECIFICATIONS

- Machine Size: 20"W x 26"L x 36"H (50 cm. x 66 cm. x 91 cm.)
- Electrical: 110 v, 60 Hz, 5 amp. standard 220 volt available.

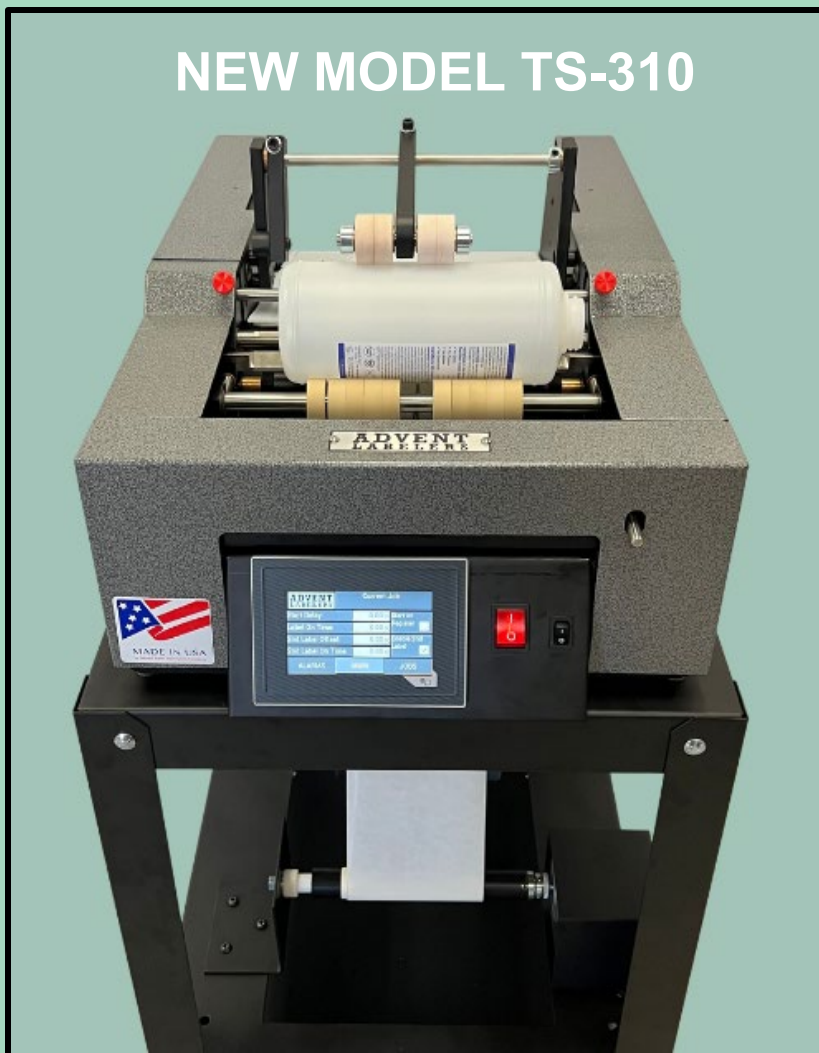


New Digital Home Screen

The 300 can outperform many automatic machines, especially on difficult label stocks such as plastic, mylar, polyester and Tyvek.



NEW MODEL TS-310



The Advent Model 310 is what you might call an almost automatic Pressure-Sensitive labeling machine. Containers are fed into the machine by hand but are ejected automatically. As the operator places the container into the machine the previous labeled container is pushed forward and onto a short gravity conveyor. If the containers are filled, they roll forward to the packing station. If they are empty, they can roll off into a box or go directly to the filling line.

By handling each container only once, labeling speed is increased considerably. Speeds up to 30 to 40 containers per minute are not uncommon.

FEATURES

- Applies labels to round containers from one ounce to one gallon
- Labels 30 to 50 containers per minute.
- Fast container size change with no change parts necessary,
- Machine stand with casters.
- Two Year Warranty.

CONTAINER SPECIFICATIONS

- Container Diameter: 1/2" to 12" (.85 cm. to 30.489 cm.)
- Label Size Min: 3/4"W by 1"L (1.90 cm. by 2.54 cm)
- Label Size Max: 8"W by 20" L (20.32 cm by 50.8 cm.)

MACHINE SPECIFICATIONS

- Machine Size: 20"W x 26"L x 36"H (50 cm. x 66 cm. x 91 cm.)
- Electrical: 110 v, 60 Hz, 6 amp. standard 220 volt available.

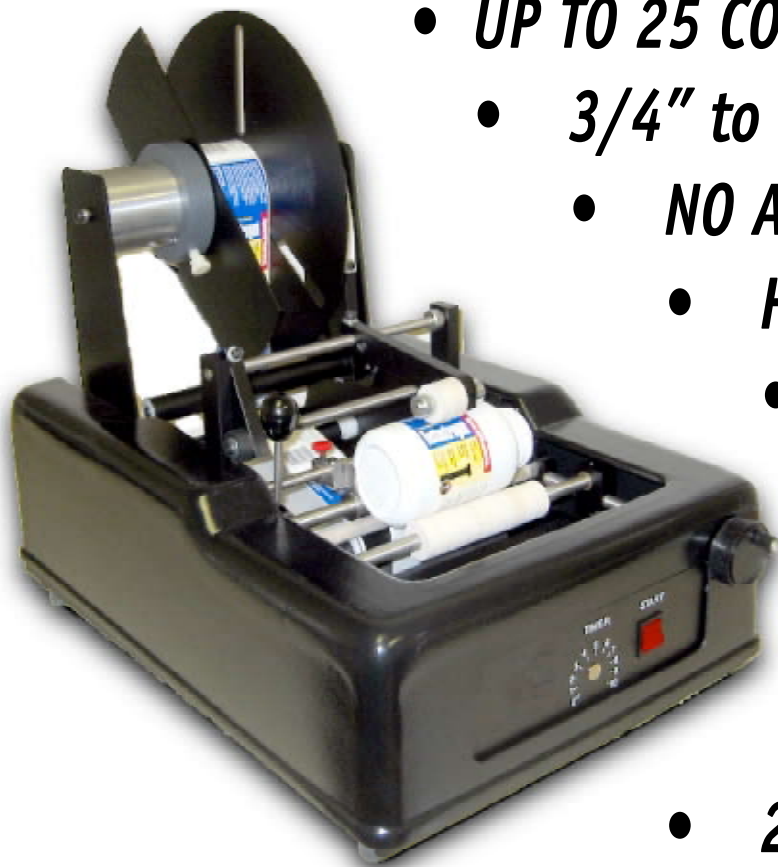


New Digital Home Screen

The Advent 310 is the most versatile labeler on the market today. From chapstick size containers to 1-gallon plastic jugs, the Advent 310 can label almost any round container with ease.

302

LOW COST, SEMI-AUTOMATIC PRESSURE SENSITIVE LABELER



- **UP TO 25 CONTAINERS PER MINUTE**
- **3/4" to 12" IN DIAMETER**
- **NO AIR REQUIRED**
- **HAND TRIGGER**
- **AUTOMATIC BRAKE ARM**
- **QUICK CHANGEOVERS**
- **ALL TYPE CONTAINERS:
METAL, PLASTIC, & GLASS
WITH OR WITHOUT RIDGES.**
- **2-YEAR WARRANTY**

**Does Not Includes Cart
and Overhead Pressure Arm*

TECHNICAL SPECIFICATIONS: ELECTRIC: 110V, SHIPPING WEIGHT 65#

LABEL AND CONTAINER SPECIFICATIONS:

MINIMUMS:
MAXIMUMS:

LABEL WIDTH: 3/4"
LABEL WIDTH: 8"

LENGTH: 1"
LENGTH: 20"

CONTAINER: 1" OD
CONTAINER: 12" OD

LABELS MUST BE WOUND ON A 3" FIBER CORE IN COPY POSITION #3 or #4 (#3 IS BEST)



Insert container and tap lever to apply label.



Label is applied within seconds, up to 25 cps.



Spot or wraparound, perfect accuracy, no wrinkles.



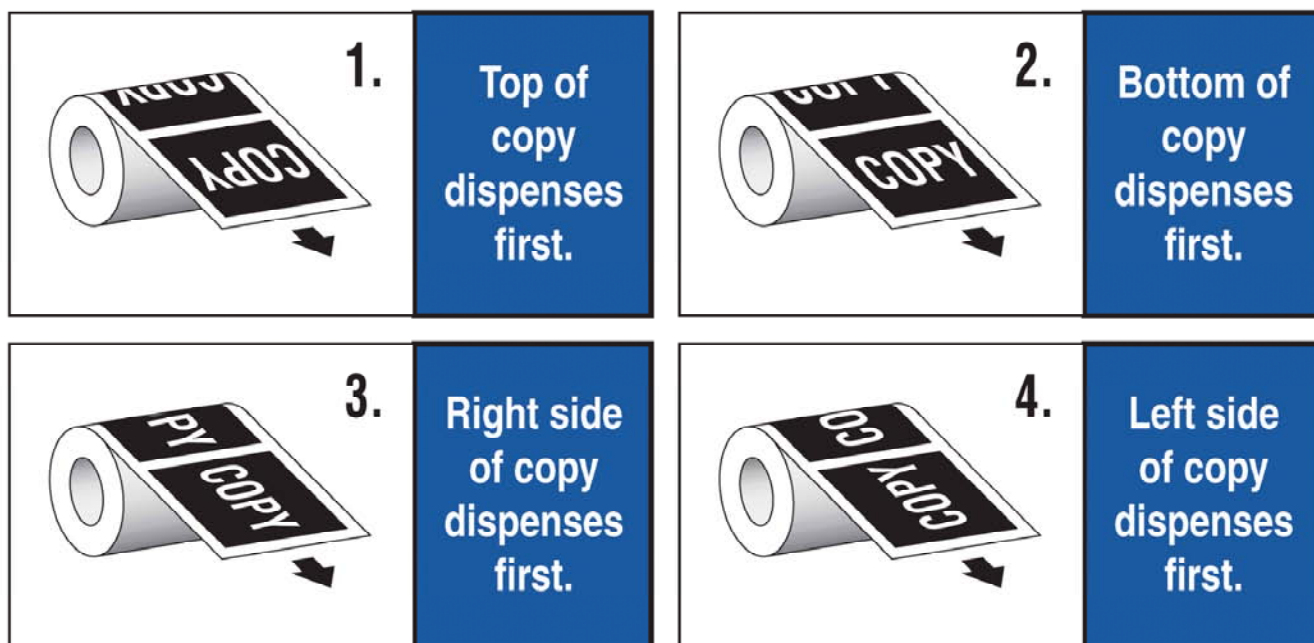
ADVENT LABELERS

6815 E. Washington Blvd., Commerce, CA 90040
 Tel: 323-728-5367 or 800-846-7716 • Fax: 323-728-2443
www.adventmachines.com

"Equipment to Label Your Round Products and Containers"

COPY POSITION CHART for PRESSURE-SENSITIVE LABEL ROLLS

1. Advent 300 Series machines are designed to work with copy positions 3 or 4 for most containers and products. Examine your product for exceptions that may indicate use of copy positions 1 or 2
2. Copy position 3 is recommended because it allows the 300 series labelers to accommodate 10" or taller containers or products (see photo at bottom)
3. Most label materials are acceptable but we request sample rolls be sent to our office
4. Labels must be wound onto 3" fiber core
5. Labels can be either butt-cut (kiss-cut) or die-cut ($\pm 1/8$ " space between labels)
6. Perforated labels are not recommended (send samples if perforated labels are required)
7. Maximum outside diameter of label roll should be 10" (contact us if diameter is larger)
8. Release liner should be .0025" or less and be 40LB SCK (Super Calendar Kraft) or 50LB PC (Poly Coated)



This picture shows the Advent 300 labeling a 1-gallon container. The labels are in copy position 3. This allows the open frame on the right side of the machine to accommodate the excess height of this tall container.

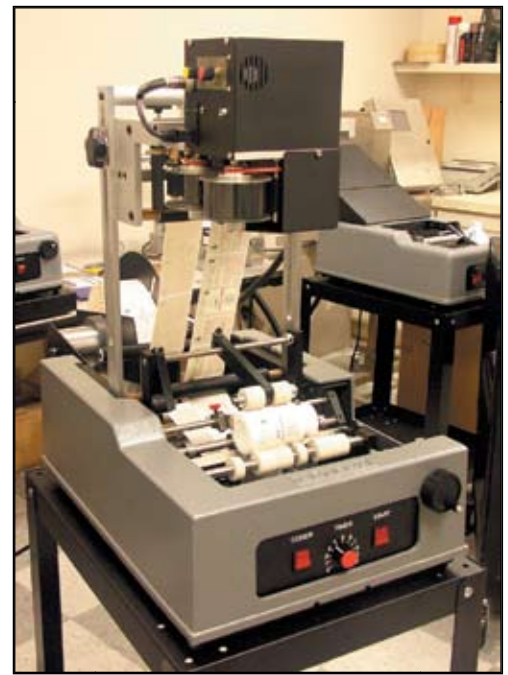
Important: The customer assumes all risk and liability for design and engineering of label stock, label liner and product labeled. Advent Label Applicator Co., Inc. is not responsible for the performance of label materials and warrants only the performance of Advent machines as covered by the Advent machine warranty and makes no other warranty, expressed or implied, and liability shall be limited to the repair or replacement of the machine or repayment of the purchase price of the machine less freight. See Advent brochure or owners' manual for 2-year limited warranty.

ADVENT HSC HOT STAMP CODER

The Advent HSC is a motor-driven hot stamp coder that allows your Advent 300 series labeler to print date codes, lot numbers, prices and other variable information. The HSC provides a unique, low cost method of imprinting and labeling your product in one step.

FEATURES

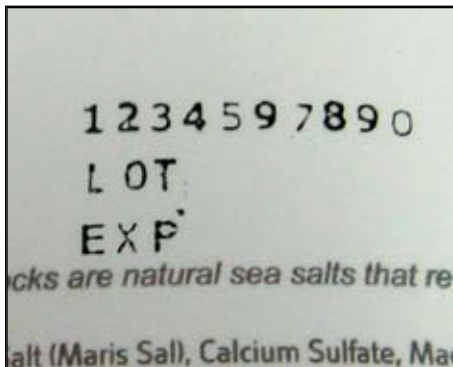
- No Air Required, Electrically Driven.
- Includes 2mm (6-point) Brass Typeset
- Imprints Vertically or Horizontally
- Easy Horizontal and Vertical Positioning for Exact Code Placement
- 7/8" x 1-3/4" Print Area, Up to 3-Lines of Text
- Uses 500' Resin-Based Ribbon for Permanent Marking
- Adjustable Ribbon Pitch
- Imprints Both Synthetic and Paper Labels
- Available for Advent 300, 302 and 310.



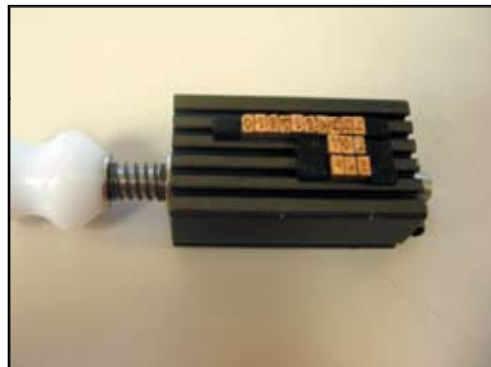
HSC MOUNTED ON ADVENT 300



IMPRINT ON PLASTIC LABEL



3 LINE SAMPLE, FILM



TYPECHASE WITH 2mm, 6pt TYPE



CODED AND LABELED BOTTLE

The advertisement features a woman in a hairnet and black jacket holding a tablet, standing in front of a Linx 10 CIJ printer. The printer is shown in two views: a full view and a close-up of the control panel. The control panel has a color touch screen displaying a menu with icons for 'Print', 'Setup', 'Maintenance', and 'Help'. The printer is printing 'Fenland Honey Beer' on glass bottles. The Linx logo is in the top left corner.

LINX

Linx 10

For the first time, a CIJ printer you can easily move between lines.

Designed for single shift production, the Linx 10 provides high quality, two or three line print onto any dry substrate. With the smallest footprint on the market, you can move it to where you need to code. Size isn't everything though. Code setup is simple, making product changeovers quick and error-free, and a robust design provides you with the high level of reliability you expect from Linx.

\$7,995

Includes:

- (1) basic bracket assembly**
- (1) photo sensor**
- (1) ink, solvent and starter kit**

Compact and portable

- The Linx 10 occupies a fraction of the space of other CIJ printers, plus it can be fixed directly to your production line, ideal where space is limited
- Its lightweight design, carry handle and printhead dock make it easy to move to where you need to code
- A unique, integrated line speed sensor dispenses with the need for extra equipment, making setup quick, plus it ensures your products are coded at the right time, in the right place.

Truly simple coding

- Color touch screen with icons which are easy to understand – makes code setup and selection truly simple
- Use product imagery to select jobs – for error-free code setup
- Fluids are contained in sealed cartridges, which simply click into place, even during printing – no mess, no tools, no mistakes
- Service the printer yourself quickly using the on-screen instructions, and plan servicing around your production schedules – reduce your downtime.

A robust coding solution at an affordable price

- The printer's stainless steel enclosure has an IP55 rating – suitable for most coding environments
- Linx's industry-leading printhead is completely sealed for continual reliable operation – minimal cleaning required to maintain optimal print quality
- Quick, clean starts every time with autoflush – Linx's automatic printhead cleaning feature. Leave the printer unused for a month and it will still print right first time with no extra cleaning or processes – saving you time and consumables.



Sales tax applicable on all purchases within California.



F.J. SMITH SALES CO., INC.

6815 E. Washington Blvd., Commerce, CA 90040

Phone: 323-728-0227 • Fax 323-728-2443

www.fjsmith.com • Email: fjsmithsales1@gmail.com

Inkjet Coding



SMART-JET *GLIDE*

\$2,395

Bluetooth Technology.

Flexibility to Print Hard-to-Reach Areas.

MSSC Smart-Jet® *Glide* Ink Jet Printers are compact and reliable and can be controlled with a wireless keyboard or via Bluetooth. This power house coder prints on porous and non-porous surfaces and can print barcodes, QR codes and logos. Anti-shock mounting mechanism adjusts to surface irregularities for consistently smooth and high-quality printing results.



SMART-JET *LITE*

\$1,495

For Compact Printers, it is the Total Package.

MSSC Smart-Jet® *Lite* Ink Jet Printers are setting new standards of excellence by making consistently bold impressions in packaging applications. Controlled by keyboard only, prints barcodes and logos on porous, semi-porous and non-porous surfaces. The Smart-Jet *Lite* is widely recognized as the most reliable, economical and compact ink jet coder on the market.



SMART-JET *HAND HELD*

\$2,095

Mobile. Lightweight. Now That's Smart.

The MSSC Smart-Jet® Hand Held Coder offers a breakthrough design for true mobile use. The Smart-Jet Hand Held can be programmed on the go from an Android device, or a keyboard for rapid changes.

- Ultra-portable and lightweight (1.83 lbs., 830 gm with battery and cartridge)
- Print anywhere and at any angle
- Print small diameter materials
- Change message anywhere with Android device or keyboard



SMART-JET *INKS*

Get Smart. Get Reliable. Get Printing.

MSSC Smart-Jet® Inks are designed to produce reliable and consistent printing results in coding applications. For use in all Smart-Jet® series thermal ink jet prints, these inks set the standard for quality and performance in the industry. A 442mL water based bulk ink option is available for high throughput operations. MSSC solvent inks can print on plastics, glass and metal. Many colors available.

Sales tax applicable on all purchases within California.



F.J. SMITH SALES CO., INC.

6815 E. Washington Blvd., Commerce, CA 90040

Phone: 323-728-0227 • Fax 323-728-2443

www.fjsmith.com • Email: info@fjsmith.com

Inkjet Coding



SMART-JET MAX

\$1,995

**Bluetooth Technology, 1" Tall Seamless Print Area
and Bulk Inks for Complete Coding Control.**

With a 1" tall seamless print area that doesn't have to be stitched together, MSSC Smart-Jet Max Inkjet Printers are compact, reliable and can be controlled wirelessly via bluetooth technology (no router needed). This innovative coder can print bar codes, QR codes and logos on porous and non-porous surfaces using bulk inks. A large display screen makes it easy to read and simple to operate.



QM7500 INDUSTRIAL

\$1,989

Makes Coding Applications Simple.

MSSC QM7500 Ink Jet Printers feature a compact single-line ink jet system that can be quickly installed, programmed and printing in minutes. With high ink mileage and low-maintenance requirements, this hard-working printer, designed specifically for porous surfaces, offers reliable high performance at an economical price.



QM1610 INDUSTRIAL

\$2,750

The Versatile Answer for Coding.

MSSC QM1610 Ink jet Printers make printing product names, identification numbers, automatic production counts and up-to-the-minute coding fast and easy with just the touch of a button. This versatile performer can print one or two lines of text and is simple to program.

Sales tax applicable on all purchases within California.



F.J. SMITH SALES CO., INC.

6815 E. Washington Blvd., Commerce, CA 90040

Phone: 323-728-0227 • Fax 323-728-2443

www.fjsmith.com • Email: info@fjsmith.com

Inkjet Coding



SMART-JET *DUO REACH*

\$2,795
Controller w/ 1 printhead

Printing Twice As Far Is Now Easily Within REACH.

The most unique feature of the Smart-Jet DUO REACH is how it's designed for use with an all new cartridge that can shoot ink up to 2x as far compared to other thermal inkjet cartridges. Plus, since it utilizes the DUO Controller, the REACH gives you the option to use up to two printheads with one DUO Controller. It also uses an MEK based solvent that can print on almost any material you require, even porous and non-porous surfaces. Other benefits include a user-friendly touch screen controller, printing speeds up to 131 ft. (40m)/min at 300dpi, resolutions up to 600dpi and universal UI software. The Smart-Jet® DUO REACH extends beyond what other printing technologies offer.

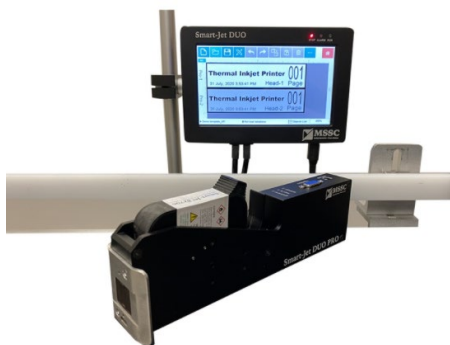


SMART-JET *DUO MAX*

\$2,545
Controller w/ 1 printhead

For the maximum print coverage, use the Smart-Jet® DUO MAX.

When your printing requirements require the maximum coverage area, the Smart-Jet® DUO MAX has massive appeal. Paired with the DUO Controller, the MAX gives you the opportunity to code 1" tall messages on both sides of a product! It allows you to print everything from text, counter, box/lot and expiration date to Julian date, shiftcode and barcodes. And while you get the benefit of free-design within a 1" template area, there's also the advantage of printing online data and integrating with other devices such as a PLC, camera and checkweigher. That's a maximum amount of advantages you get with the SMART-JET® DUO MAX.



SMART-JET *DUO PRO*

\$2,420
Controller w/ 1 printhead

The Smart-Jet® DUO PRO removes multiple boundaries in printing.

The Smart-Jet® DUO PRO gives you the advanced printability features you require. The Smart-Jet® DUO can connect to either one or two printheads at one time, to give maximum flexibility and the ability to print on both sides of a production line, all controlled from a central 7" touchscreen. It has the production speed you require at 249 ft. (76m)/min at 300dpi for printing everything from text, counter, box/lot and expiration date to Julian date, shiftcode and barcodes. The benefits continue with the capabilities of free-design, printing online data and integrating with a PLC, camera and checkweigher. It's called the PRO because it's designed to deliver the professional printing results you require.

Sales tax applicable on all purchases within California.



F.J. SMITH SALES CO., INC.

6815 E. Washington Blvd., Commerce, CA 90040

Phone: 323-728-0227 • Fax 323-728-2443

www.fjsmith.com • Email: info@fjsmith.com

SMART-JET PLUS INKJET CODER

MOUNTS ONTO ANY ADVENT 300 SERIES LABEL APPLICATOR

PRINTS LOT NUMBERS, BATCH CODE, USE BY DATE, SECURITY CODES, BARCODES



The Compact Printer
That's Cracked The Code.



\$3,190

The reliable, compact inkjet coder for your label marking and coding needs
Hi-resolution readability on most label materials with fast drying ink
Each snap-in / snap-out ink cartridge provides a new built-in printhead
2.8" screen with automatic rotating multi-color display and 6 menu languages

Real time interface to report current operation of printer to mobile devices.

Quick change ink cartridge-printhead means no mess and virtually no downtime or maintenance

Smart-Jet Plus Inkjet Coder with photo-eye and Advent engineered brackets. Complete system is mounted onto any Advent 300 Series label applicator. Includes wireless keyboard, 1 black ink cartridge-printhead and owner's manual
Additional 42ml black ink cartridge-printhead - \$ 137.00



ADVENT

LABEL APPLICATOR CO., INC.
*Semi-Automatic, Round Product Labelers for
Pressure Sensitive and Plain Paper Labels*

PICTURES OF APPLICATIONS

FOR DEMONSTRATION AND OPERATION VIDEOS PLEASE SEE

<https://www.youtube.com/user/adventmachine/>



**ADVENT 310 PUSH-THRU
PRESSURE SENSITIVE LABELS
WATER BOTTLES**



**ADVENT 200
PLAIN PAPER LABELER
PAPER FIBER CANS**



**ADVENT 300
PRESSURE SENSITIVE LABELS
LARGE PLASTIC JARS**



**ADVENT 310 PUSH-THRU
PRESSURE SENSITIVE LABELS
CAULKING TUBES**



**ADVENT 200
PLAIN PAPER LABELER
PLASTIC JAR RECESSED AREA**



**ADVENT 300
PRESSURE SENSITIVE LABELS
CLEAR LABEL STOCK**



**ADVENT 310 PUSH-THRU
PRESSURE SENSITIVE LABELS
VITAMIN BOTTLES**



**ADVENT 200
PLAIN PAPER LABELER
PLASTIC VITAMIN BOTTLE**



**ADVENT 300HSC
PRESSURE SENSITIVE LABELS
BOSTON PLASTIC ROUNDS**



**ADVENT 310 PUSH-THRU
PRESSURE SENSITIVE LABELS
PLASTIC QUART BOTTLES**



**ADVENT 302
PRESSURE SENSITIVE LABELS
STRETCH FILM ROLL**



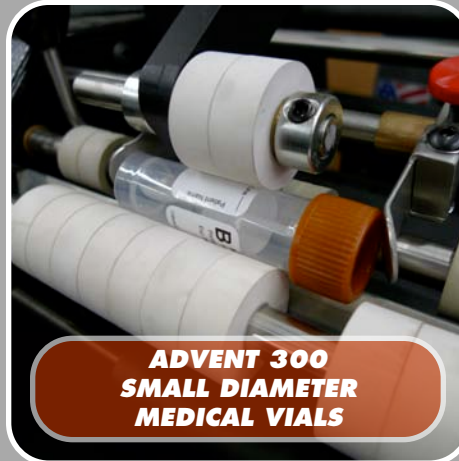
**ADVENT 310 PUSH-THRU
PRESSURE SENSITIVE LABELS
LIP BALM**



**ADVENT 200ALR
OPTIONAL REGISTRATION
1 GALLON BLEACH**



**ADVENT 302
PRESSURE SENSITIVE LABELS
PEANUT BUTTER**



**ADVENT 300
SMALL DIAMETER
MEDICAL VIALS**



**ADVENT 300AFS
OPTIONAL REGISTRATION
MASON BOTTLES**



**ADVENT 302
PRESSURE SENSITIVE LABELS
CLEAR LABEL STOCK**



**ADVENT 300HSC
HOT STAMP CODING
UP TO 3 LINES OF CODING**



**ADVENT 201
1 GALLON PAINT CAN
WITH EAR REGISTRATION**



**ADVENT 302
PRESSURE SENSITIVE LABELS
NUTRACEUTICAL JUGS**



**ADVENT 205
PLAIN PAPER LABELER
5-GALLONS PAILS**



**ADVENT 305
PRESSURE SENSITIVE LABELS
TAPERED CONTAINERS**

ADVENT LABELERS PRICE LIST

Semi-Automatic Label Application Machines
SEPTEMBER 2023

6815 E. Washington Blvd., Commerce, CA 90040

Tel: 323-728-5367 Fax: 323-728-2443

www.adventmachines.com



200

200

TS-200

Touch Screen
Model

Hotmelt Standard Model with Wheeled Cart

Plain Paper Labeler with Standard Skip-Glue

Minimums: label width: 3/4" length: 4" container: 1" OD
Maximums: label width: 8.5" length: 25" container: 12" OD

\$8,190.00

\$8,495.00*

**INTRODUCTORY PRICING
ON NEW TOUCH SCREEN
MODELS*



205

205

TS-205

Touch Screen
Model

Hotmelt Pail Model with Wheeled Cart

5-Gallon Labeler with Automatic Lug Registration

Minimums: label width: 3/4" length: 4" container: 3" OD
Maximums: label width: 8.5" length: 25" container: 12" OD

\$9,490.00

\$9,795.00*

**Advent strongly recommends hotmelt systems over cold glue.; however cold glue systems are available with testing.*



300

300

TS-300

Touch Screen
Model

Pressure Sensitive Standard Model with Wheeled Cart

Pressure Sensitive Labeler with Automatic Label Feed Activation

Minimums: label width: 3/4" length: 1" container: 1" OD
Maximums: label width: 8" length: 20" container: 12" OD

\$4,990.00

\$5,295.00*

301

Pressure Sensitive Manual (Hand Crank) Labeler (No Cart)

Manual Labeler that Requires No Electricity

Minimums: label width: 3/4" length: 1" container: 1" OD
Maximums: label width: 8" length: 20" container: 12" OD

\$2,390.00

302

Pressure Sensitive Basic Labeler (No Cart)

Pressure Sensitive Labeler w/ Hand Activated Label Feed

Minimums: label width: 3/4" length: 1" container: 1" OD
Maximums: label width: 8" length: 20" container: 12" OD

\$3,590.00



310

310

TS-310

Touch Screen
Model

Pressure Sensitive Push-Thru with Wheeled Cart

Unique Push-Thru Labeler for High Output Applications

Minimums: label width: 3/4" length: 1" container: 1/2" OD
Maximums: label width: 8" length: 20" container: 12" OD

\$5,990.00

\$6,395.00*

OPTIONS AND CODERS

OPA

Overhead Pressure Arm Assembly

Applies pressure against lightweight containers to insure proper adhesion.
Included on all labelers (200, 300, 301, 302, & 310) unless specified.

\$357.50

FBO

Front/Back Option

Allows Model 300 and 310 to apply front label (A) and rear label (B).
Labels must alternate on single roll (A-B-A-B). Requires Qualification.

\$1,000.00

ALR

Automatic Label Registration Option

Allows machine to position label on container by registering container's lug or handle.
An example would be a 1-gallon bleach type container. Available on 200, 300 and 310.

\$800.00

AFS

Foot Pedal Registration

Allows machine to position label on container without lugs or handle.

\$700.00

A220

220 Volt AC Modification

Conversion of all electrical components to operate with 220V.

\$500.00

HSC

Hotstamp Coder for Advent 300 and 310 Model

Accessory to code mark pressure sensitive labels. Air not required.
Does include standard 2mm or 3mm brass letter/number type.

\$3,190.00

80000P

SMART-JET+ INKJET CODER 1 TO 6 LINES (TIJ)

Small character, all-surfaces inkjet coder designed for coding directly onto product.
Can be integrated with an Advent labeler for coding the bottom of a bottle. Made in the USA.

\$3,190.00



302



301

FOB Commerce, CA 90040. Prices and specifications subject to change without notice. Taxes and shipping/handling are extra.

We strongly recommend sending in labels and containers for testing and setup.

"Ask about the Advent Advantage" since 1988 • 2-Year Limited Warranty • Made in the USA