



SUBMITTAL

CM-UVS UNIVERSAL CEILING MOUNTING BRACKET FOR CLASS II UVS

PROJECT:

LOCATION:

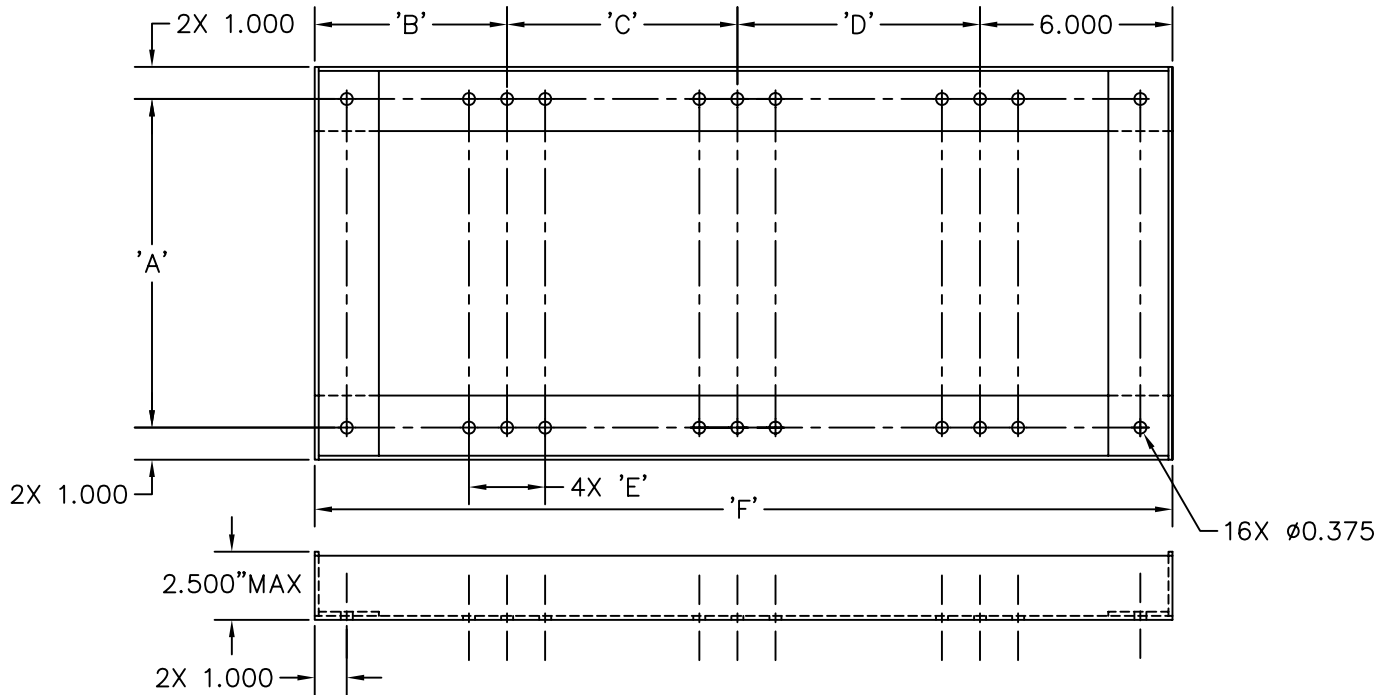
ENGINEER:

SALES ENGINEER:

ARCHITECT:

CONTRACTOR:

DATE:



MODEL	'A'	'B'	'C'	'D'	'E'	'F'
CM-UVS122-II	14-5/8"	6"	12-1/2"	18-1/2"	2-3/8"	43"
CM-UVS135-II	16-1/8"	6"	13-9/16"	20-1/4"	2-3/8"	45-13/16"
CM-UVS150-II	17-5/8"	6"	14-3/4"	20-1/4"	2-3/8"	47"
CM-UVS165-II	18-1/2"	6"	16-1/16"	20"	2-3/8"	48-1/16"
CM-UVS182-II	21-3/4"	6"	17-7/16"	24-3/4"	3"	54-3/16"
CM-UVS200-II	21-3/4"	6"	18-15/16"	24-5/8"	3"	55-9/16"
CM-UVS222-II	22-1/4"	6"	21-1/2"	23-7/8"	3"	57-3/8"
CM-UVS245-II	23-1/4"	6"	23-3/16"	23-7/8"	3"	59-1/16"
CM-UVS270-II	24-1/4"	6"	25-1/8"	26-1/8"	3"	63-1/4"
CM-UVS300-II	24-3/4"	6-1/2"	28-3/8"	25-3/8"	3"	66-1/4"
CM-UVS330-II	28-1/4"	7-1/2"	30-5/8"	28-7/8"	3"	73"
CM-UVS365-II	28-1/4"	7-1/2"	33-7/16"	28-7/8"	3"	75-13/16"

SCHEDULE

ITEM	QTY	MODEL	REFERENCE

NOTES:

1. FRAME - 2" x 2" x 1/8" PAINTED STEEL ANGLE.