

cer•project

## Home Edmonton, Canada

IF THIS HOME OFFERS A JOURNEY THROUGH THE WORLD OF NATURAL STONE, THEN THE STARTING POINT IS THE LARGE GREEN QUARTZITE KITCHEN ISLAND. ON THE LOWER FLOOR, TRAVERTINE IS COMBINED WITH METAL, DARK WOOD AND WARM EARTH TONES

AN ELEGANT  
CANADIAN HOME

by Simona Storchi

Campbell House, a more than 460 square metre mansion located in Edmonton, in the Canadian province of Alberta, was designed for a local charity but later purchased by the Campbell family from Winnipeg. Inside, a masterful balance of natural colours reflects the different personalities of the owners, the colours and veins of travertine and quartzite offering a journey through the world of natural stone. But the heart of the house, the jumping off point for the entire interior design project and choice of surface coverings, was the natural green quartzite used by interior designer Marie Hebson for the kitchen island. The colours and tones – the soft hues of warm gray, earthy citrine greens, chocolate and rich charcoals – all branched off from this stone. The main floor was designed for the woman of the house. The silver-vein travertine ceramic floor tile from Fioranese coordinates with the cheerful white cabinetry and with the details of carrara marble, the rich warm hardwoods, quartz, milk glass and tone-on-tone wallpaper. "The main areas of the home have a distinctly feminine character, starting out from the floor covering," Marie Hebson explained. "The rooms are fresh and inviting: I chose pale colours, pairing them with bright steel and crystal along with a touch of golden brown. I wanted to make the rooms

## CAMPBELL HOUSE

**project**  
Marie Hebson  
interiorsbydesignab.ca

**photos**  
Natasha Dixon  
Photography

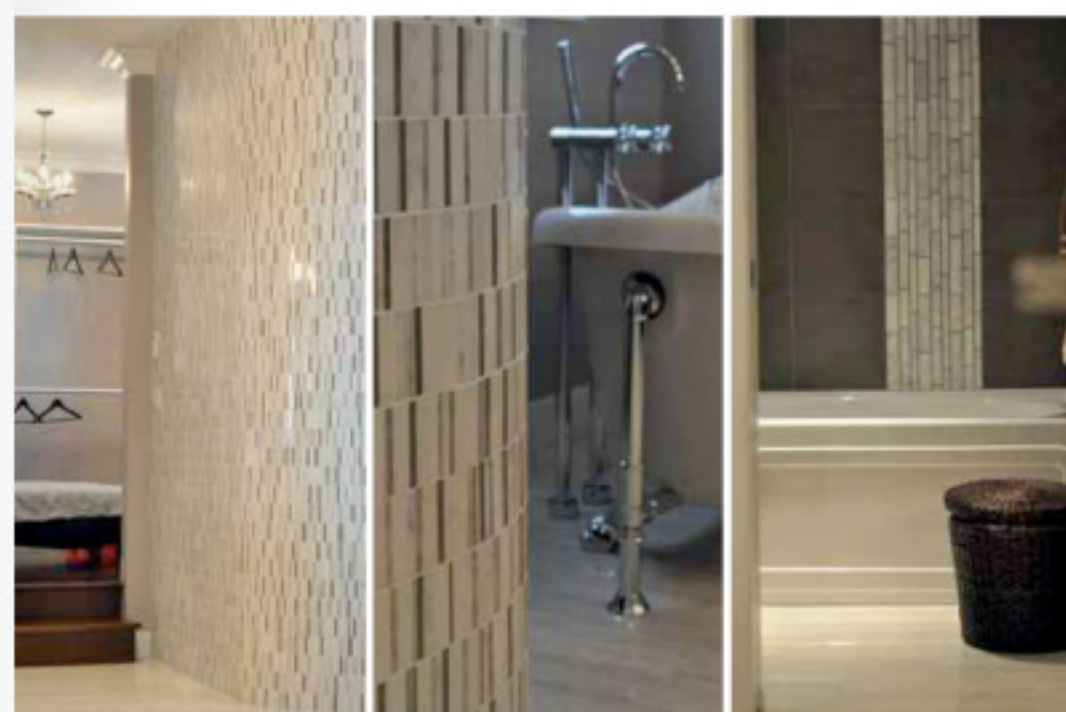
**ceramic surfaces**  
Fioranese  
www.fioranese.it

**distributor**  
Tierra Sol Ceramic Tile  
www.tierrasol.ca

**year of completion** 2011



warm, welcoming and feminine, inspired by a St. Tropez style and a concept of livable luxury, setting classic furnishings alongside contemporary upholstery." The basement on the other hand is devoted to the man of the house and explores the concept of entertaining in casual elegance. Dark sexy charcoal and chocolates give way to the same grey hues, adding in caramel. This home boasts all three metals, showing that it is possible to mix brushed nickel, chrome and antique gold. The designer took the grey silver-vein travertine chosen for the floor tile as the inspiration for the surface coverings in all the rooms and on all the floors of Campbell House. The laundry room tones in with the essential, chic spaces of the house and the chosen colour palette, featuring a pale coloured floor and white cabinetry with glass inlay spelling "Wash, Sort, Dry" in a damask pattern. The powder room has a custom pattern of five different carrara marbles and milk glass mosaics. An elegant striato olimpico marble was chosen for the master bedroom, a white carrara marble mosaic for the "hers" spa-style shower, and a satin cement tile for the "his" bathroom and shower. "The key to the choice of floor coverings in Campbell House was the compact silver-vein travertine," continued Marie Hebson. "I used white based colours for the parts of the house used by her and grey and dark tones for the parts devoted to him, bearing in mind that the chosen materials would have to coordinate with the algal green tones of the quartzite in the kitchen." The dining room reflects the taste for simplicity of the other areas of the house and is all tile, as is the front foyer, mudroom, main floor powder and master ensuite. For the living room and master bedroom the Campbells chose hardwood.



**spaces**  
urban residential

**applications**  
internal floor coverings

**ceramic surfaces**  
porcelain tile  
Nu\_Travertine series  
Silver  
30x60 cm, 60x60 cm

**technical characteristics**  
water absorption  
(ISO 10545-3): < 0.5%  
modulus of rupture and  
breaking strength  
(ISO 10545-4): 36 N/mm<sup>2</sup>  
surface abrasion  
resistance  
(ISO 10545-7): PEI 4  
coefficient of linear  
thermal expansion  
(ISO 10545-8): compliant  
thermal shock  
resistance  
(ISO 10545-9): compliant  
crazing resistance  
(ISO 10545-11): compliant  
frost resistance  
(ISO 10545-12): compliant  
chemical resistance  
(ISO 10545-13): GLA  
stain resistance  
(ISO 10545-14): compliant  
slip resistance  
(DIN 51130): R9



Nu\_Travertine  
Silver

**certifications**  
LEED, EMAS, ISO 14001

The colour palette of the surface coverings in all the rooms derives from the grey silver-vein travertine used in the daytime area.

