



CEROMONE

PHYTO ESTROGENS - everlasting beautiful skin





Table of Contents

	page
1. Table of contents	3
2. Phyto estrogens: Origin and action	4
3. The CEROMONE preparations	6
3.1. CEROMONE age control cream	6
Action	6
Application	6
3.2. CEROMONE age control fluid	7
Action	7
Application	7
3.3. CEROMONE firming neck and décollete fluid	8
Action	8
Application	8
3.4. CEROMONE hydramin ampoule concentrate	9
Action	9
Application	9
3.5. CEROMONE firming body treatment	10
Action	10
Application	10
4. Application-Tips	11

2. Phyto estrogens

Origin and action

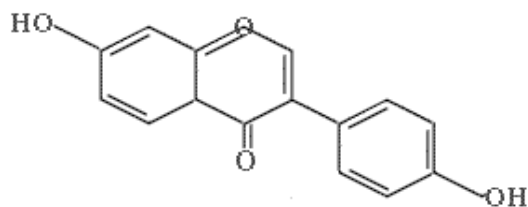
Plant ingredients with hormone- like action

The rapid menopausal decrease of estrogen significantly contributes to the hormonal skin aging. By the use of corresponding estrogen hormone creams thickness and elasticity of the skin can be improved, and also skin dryness as well as wrinkle depth can be reduced. However, many women reject such hormone creams because of their potential risks.

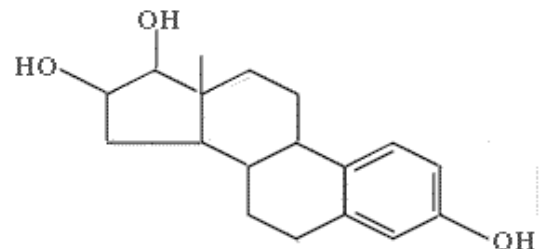
Phyto estrogens provide an alternative and stand out due to their good effectiveness as well as due to their excellent compatibility and safety. A variety of plant foods contain phyto estrogens and especially the isoflavones which are tried and tested for their effect on the skin. Soy beans show the highest content of isoflavones and their extract is used in our CEROMONE preparations.



Genistein and Daidzein are the main ingredients of the isoflavones. These non-steroidal molecules have a structure similar to 17- β -Estradiol and because of that they show an estrogen-like effect. They connect to the corresponding hormone receptors of the skin and by that unfold their effects. Very important: They accumulate in the skin and do not spread in the organism, so eventual systemic action with eventual side effects is prohibited.



Daidzein



17- β -Estradiol

In the meantime the effect of isoflavones containing creams has been investigated many times, and all studies confirm their positive effects like the improvement of skin dryness, increase of elasticity and less wrinkles.

Phyto estrogens- how they work:

The isoflavones in the CEROMONE line have been thoroughly tested for their effectiveness in various studies. Here are the results:

1. **Same as with the application of real estrogen, the natural loss of the soluble skin collagen is slowed down, simultaneously the growth of new collagen fibers is stimulated.**
The consequence is an improved water-binding capacity of the skin, resulting in a full and healthy skin appearance.
2. **The regular use of isoflavones has a gently working brightening effect on the skin, and especially age spots gradually fade away.** The brightening effect can be compared to Arbutin, but is milder on the skin. The effect of isoflavones is superior to ascorbic acid and koji acid.
3. **The CEROMONE isoflavones improve the skin tolerance towards aggressive UV radiation.**
As can be observed with estrogens, they slow down the formation of lipid peroxides. Peroxides are highly reactive and help to build free radicals. They damage natural body substances and in the worst case they can cause genetic changes.
4. **Applied after epilation, the CEROMONE isoflavones slow down the growth of new hair.**

All effects described are based on the estrogen-like action of the isoflavones. Additionally the CEROMONE preparations contain a choice of newest high tech ingredients, which provide an individual care character to each of the products.

The line contains of five products which complement each other optimally re the care of demanding skin at home as well as re the use with the OXYJET pulsed oxygen pressure injection in the professional salon:

CEROMONE age control cream
CEROMONE age control fluid
CEROMONE firming neck and decollete fluid
CEROMONE hydramin ampoule concentrate
CEROMONE firming body treatment

All are optimal for

- externally supplementing a systemic hormone treatment during menopause
- treating hormonally caused impurities of dry skin
- preventing premature skin aging
- treating mature, very atrophied and parchment-like skin.

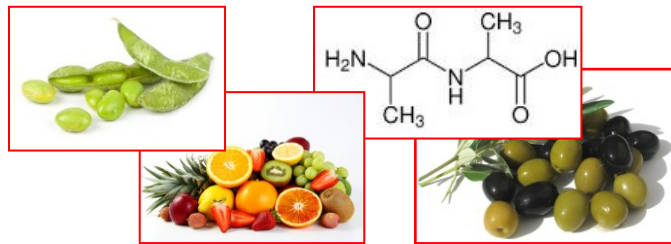
3. CEROMONE

3.1. age control cream

CEROMONE age control cream

Definition: Rich regeneration cream for treatment and prevention of premature aging of your skin. Supports the formation of collagen and hyaluronic acid, gently reduces age speckles and the typical look of decreasing elasticity. For fresh, youthful and elastic skin. Free from parabens.

Active Ingredients: Soy isoflavones
Peptides
Vitamins A, E and C
Squalane
Grape Seed Oil
Jojoba Oil
Sun Flower Oil



Action: **Soy isoflavones**
slow down the decomposition of soluble skin collagen caused by estrogen lack and simultaneously stimulate the growth of new collagen fibers. Age spots gradually fade away and the formation of free radicals is inhibited.

Peptides

Tripeptide-1, a synthetical protein molecule consisting of the amino acids Lysin, Histidin and Glycin, stimulates the formation of hyaluronic acid and collagen.

Tripeptide-10 Citrulline is very similar to the molecule Decorin which naturally exists in young skin and which is responsible for the growth of the collagen fibers. Because of this similarity it provides a skin rejuvenating effect.

Vitamins A, E and C

increase the formation of new skin cells, protect against the damaging effects of free radicals and tighten the skin tissue.

Squalane

is very similar to the skin's own lipids and protects the skin against moisture loss. It makes the skin feel soft and supple and improves the structure of the natural hydro lipid film.

Grape Seed-, Jojoba- and Sun Flower Oil

this mixture of plant oils and waxes is very special because of its high content of unsaturated fatty acids, Procyanidine and Lecithin. It is optimal for the intensive care of dry and atrophic skin.

Application: Optimal night cream or 24-hours cream for very dry skin for the application on face, neck and décolleté. Excellent rich cream mask for neck, décolleté and hands.

Size: 50ml retail
250ml professional

3. CEROMONE

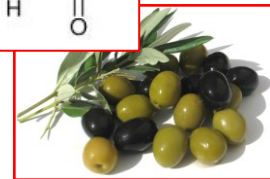
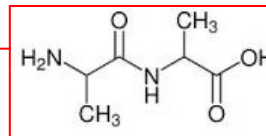
3.2. age control fluid

CEROMONE age control fluid

Definition: Intensively moisturizing fluid for treatment and prevention of premature aging of your skin. Supports the formation of collagen and hyaluronic acid, gently reduces age speckles and the typical look of decreasing elasticity. For fresh, youthful and elastic skin. Free from parabens.

Active Ingredients:

Soy isoflavones
Peptides
Lumiskin
Squalane



Action:

Soy isoflavones

slow down the decomposition of soluble skin collagen caused by estrogen lack and simultaneously stimulate the growth of new collagen fibers. Age spots gradually fade away and the formation of free radicals is inhibited.

Peptides

Palmitoyl Tripeptide-1, a synthetical protein molecule consisting of the amino acids Lysin, Histidin and Glycin is connected to palmitic acid and by that forms a lipid soluble structure. Because of that it is able to penetrate deep into the skin. In the dermal layers it stimulates the formation of hyaluronic acid and collagen.

Lumiskin

is a solution of diacetyl-boldine and caprylic/capric triglycerides that inhibits the activity of tyrosinase which is important for the synthesis of the skin colourant Melanin. So the formation of Melanin is reduced significantly and pigmentation irregularities lighten up by and by.

Squalane

is very similar to the skin's own lipids and protects the skin against moisture loss. It makes the skin feel soft and supple and improves the structure of the natural hydro lipid film.

Application: Optimal day care for face, neck and décolleté. Excellent make-up base.

Size: 50ml retail
250ml professional

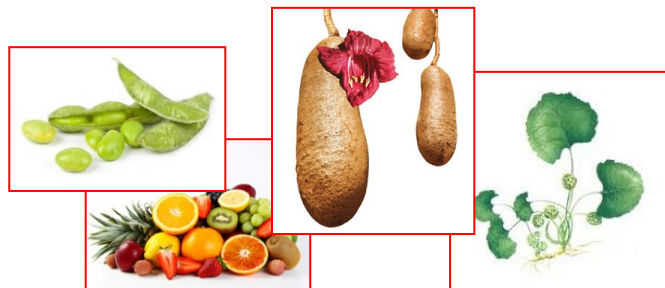
3. CEROMONE

3.3. firming neck and décolleté fluid

CEROMONE firming neck and décolleté fluid

Definition: Tightening and tissue firming fluid for the treatment of neck, décolleté and bust. Supports the formation of collagen and hyaluronic acid, tones the natural skin tissue and tightens the contours. For a fresh and youthful skin appearance. Free from parabens.

Active Ingredients: Soy isoflavones
Centella Asiatica
Kigelia Africana
Vitamins A, E and C
Grape Seed Oil
Sun Flower Oil



Action: **Soy isoflavones**
slow down the decomposition of soluble skin collagen caused by estrogen lack and simultaneously stimulate the growth of new collagen fibers. Age spots gradually fade away and the formation of free radicals is inhibited.

Centella Asiatica

the main active ingredients of Indian Pennywort are the so called Asiaticosides and Madecassosides. They show proven skin tightening and tissue strengthening effects. The skin of neck, décolleté and bust tends to slacken early and also to form stretch marks and by the application of Centella Asiatica extract it is tightened. Skin regains its elasticity, stretch marks are reduced by and by.

Kigelia Africana

Kigeline Extract is won from the fruits of the African sausage tree and traditionally is used for the tightening of bust and tummy after pregnancy in its country of origin. The women there treat their skin with the fruit pulp of these pumpkins and because of that get back their tight skin after a very short time. In the meantime the firming and strengthening effect of the extract is scientifically proven. Applied regularly the bust is visibly lifted and the skin tightened significantly.

Vitamins A, E and C

increase the formation of new skin cells, protect against the damaging effects of free radicals and tighten the skin tissue.

Grape Seed- and Sun Flower Oil

this mixture of plant oils is very special because of its high content of unsaturated fatty acids, Procyanidine and Lecithin. It is optimal for the intensive care of dry and atrophic skin.

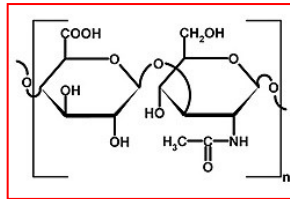
Application: Tightening and tissue firming fluid for the treatment of neck, décolleté and bust. Apply mornings and evenings and massage gently.

Size: 100ml retail

CEROMONE hydramin ampoule concentrate

Definition: Intensively moisturizing and smoothing hyaluronic acid concentrate. A smoothing special for every type of skin. For improved elasticity and significantly reduced dryness wrinkles. Free from parabens.

Active Ingredients: Hyaluronic Acid
LMW +HMW



Action: **Hyaluronic Acid**

is a linear polysaccharide built from regularly alternating units of D-glucuronic acid and D-N-acetylglucosamine. It is an important component of the connective tissue and in the skin it is an essential part of the extracellular matrix. With increasing age the content of hyaluronic acid in the tissues is reduced continuously.

Two types of hyaluronic acid are to be found in the Hydramin ampoule concentrate: The so called short chained (LMW low molecular weight) and the long chained (HMW high molecular weight) type. This results in a double effect. The *low molecular weight hyaluronic acid* penetrates to the deeper layers of the skin and increases hydration through binding of water. Applied regularly it provides a long term deposit of moisture.

The *high molecular weight hyaluronic acid* shows an immediate skin smoothing effect. It binds moisture in the upper layers of the skin effectively. It releases the bound moisture by and by and because of that provides a long term effect. It tightens the skin visibly and smoothes out fine lines immediately.

Application: Optimal „effect ampoule“ for immediate skin smoothing and tightening results. Apply mornings and evenings half of the content of the ampoule to face and neck and massage gently.
As soon as you notice a slight feeling of tension, apply your day or night care.
Also suitable for the use with the OXYJET pulsed oxygen pressure injection.

Size: 6x4ml retail
20x4ml professional

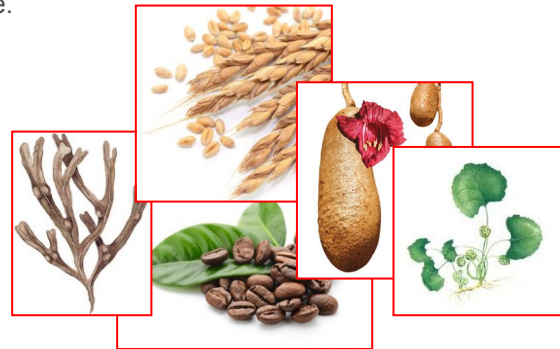
3. CEROMONE

3.5. firming body treatment

CEROMONE firming body treatment

Definition: Tightening and tissue firming fluid for the application on bust, belly, arms, legs and buttocks. Supports the formation of collagen and hyaluronic acid, tones the natural skin tissue and tightens the contours.
Free from parabens and fragrance.

Active Ingredients: Centella Asiatica
Kigelia Africana
Hydrolyzed Wheat Proteins
Bladder Wrack
Green Coffee
Hyaluronic acid



Action: **Centella Asiatica**
the main active ingredients of Indian Pennywort are the so called Asiaticosides and Madecassosides. They show proven skin tightening and tissue strengthening effects. The skin is tightened, regains its elasticity, and stretch marks are reduced by and by.

Kigelia Africana

Kigeline Extract is won from the fruits of the African sausage tree and traditionally is used for the tightening of bust and tummy after pregnancy in its country of origin. The women there treat their skin with the fruit pulp of these pumpkins and because of that get back their tight skin after a very short time. In the meantime the firming and strengthening effect of the extract is scientifically proven. Applied regularly the bust is visibly lifted and the skin tightened significantly.

Hydrolyzed Wheat Proteins

strengthen the natural skin protection barrier, improve the blood circulation and increase the elasticity of the skin.

Bladder Wrack

improves the metabolic activity of the skin and increases its nutrient intake. The fibroblasts are stimulated to increased collagen production.

Green Coffee

The extract of green coffee beans contains an extraordinary high amount of polyphenol which protects the skin effectively against the damaging influence of free radicals. Caffeine supports the decomposition of fat in the subcutaneous fat tissue, and by that helps to reduce saggy skin and cellulite.

Hyaluronic Acid

is intensively moisturizing and tightening.

Application: For the use with the OXYJET pulsed oxygen pressure injection.
Also optimal for the treatment of the problem areas at home.

Size: 150ml retail and professional

CEROMONE **best combination options**

CEROMONE is the optimal care line for dry and wrinkled skin with decreasing elasticity, which suffers from reduced estrogen production. This can be in the late thirties, sometimes even earlier.

All CEROMONE product are made for the daily application and can be combined with the ABSOLUTE EFFECTS sear and ampoules whenever necessary.

ABSOLUTE EFFECTS

volume booster

decreasing skin tone and sagging face contours

energy reload

tired and dull skin of any age

brightening corrector

irregular pigmentation and age spots

sensitive balance

couperosis, irritation and increased sensitivity

purifying control

impure skin of any age, excessive hornification and inflammation

And sometimes your skin needs some support in order to look fresh and healthy. Horny skin cells, bad blood circulation or simply the decreased activity of cell division of mature skin make the complexion appear dull and pale. After the removal of the upper horny layers skin can absorb active cosmetic ingredients much better and immediately appears fresh and smooth. Optimal conditions for the application of a smoothing and refreshing mask!

ENZYME EXFOLIATING CREAM

naturally exfoliating peeling cream mask based on enzymes. Especially recommended for the delicate, atrophic, mature skin which needs a gentle but effective exfoliation. Proteolytic-acting enzymes gently remove the cornified skin cells and stimulate the formation of young and fresh skin. The grey film is removed and the complexion appears clear and smooth.

COOL MOISTURE MASK

cooling, intensively moisturizing cream-gel mask. Suitable for every skin type, for face, neck, décolleté and hands. Chondroitine Sulfate ATP has an extremely high water binding capacity and by that smoothes the skin and supplies it with new energy. The vitamins A and E strengthen the skin's immune system and stimulate the cell regeneration. After the appliance of the Cool Moisture Mask the skin looks firm and smooth, wrinkles and lines are significantly reduced.



NORA BODE KOSMETIK

Jutta & Lothar Bode GbR

Glockengasse 8

65329 Hohenstein

GERMANY

Tel.: +49(0)6120-6484

Fax.: +49(0)6120-6329

E-Mail: info@norabode.com

www.norabode.com

